



# APC™ Charge



Mobile battery for Microsoft Surface Hub 2S

APC Charge Mobile Battery for Microsoft Surface Hub 2S enables true mobility and supports your creative flow.

Unplug, stay connected and never lose creative momentum as you move beyond the traditional meeting room, making any space a teamwork space.

Our lithium-ion battery system is designed to power the Surface Hub 2S on-the-go, so you stay connected regardless of the location.



[apc.com/hub2](https://apc.com/hub2)

Life Is  | **Schneider**  
 Electric

# Untethered Teamwork Experience



## Create and Design Anywhere

Bring Microsoft Surface Hub 2S to where creativity ignites. Common space, manufacturing floor, production line, and anywhere you want to design and create. When innovation happens, Surface Hub 2S is there powered by APC Charge.



## Boundless Collaboration

Make sure your meeting is uninterrupted and untethered to conference walls. When a room is needed, simply unplug your Surface Hub 2S and move your collaboration elsewhere while staying in the flow.

# Thinking Beyond the Battery

## Space Saver

Installed in the mobile stand pack, APC Charge maintains space for your accessories.

## Concealed Connections

Cables and connectors are cleverly concealed

## Integrated by Design

APC Charge blends with Surface Hub 2S and mobile stands, making the battery almost invisible.



# Why Should You Choose APC Charge?



## Designed for mobility

Designed in partnership with Microsoft and mobile stand partners to enable true team mobility.



## Long Battery Life

2 hours of power during typical Microsoft Surface Hub 2S usage, from the moment you unplug.



## Easy to Install

Place, secure, and connect: battery installation is that simple.



## Recharge Anytime

It only takes 90 minutes to fully recharge.



## Undisrupted Power

During unexpected power anomalies, APC Charge supplies uninterruptible power to Surface Hub 2S.



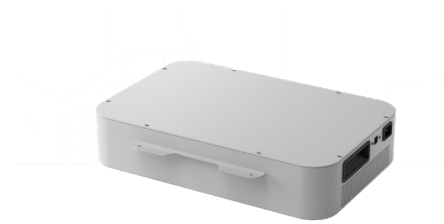
Steelcase Roam mobile stand solution



Salamder FPS mobile stand solution

# APC Charge Mobile Battery

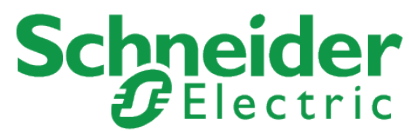
## SKU technical specifications



| CSH2                                             |                                                          |
|--------------------------------------------------|----------------------------------------------------------|
| <b>AC Input</b>                                  |                                                          |
| Input voltage (nominal)                          | 120Vac / 220Vac                                          |
| Input voltage range at full load                 | 85Vac - 270Vac                                           |
| Input current                                    | 8A                                                       |
| Input frequency                                  | 50 - 60Hz                                                |
| <b>AC Output</b>                                 |                                                          |
| Output voltage                                   | 120Vac / 220Vac                                          |
| Output current                                   | @120V 3.5A / @230V 1.8A                                  |
| Output frequency                                 | 50 - 60Hz                                                |
| <b>DC Output</b>                                 |                                                          |
| Output voltage                                   | 24V                                                      |
| Output watts                                     | 200-388 Watts                                            |
| <b>Connection Ports</b>                          |                                                          |
| AC input                                         | IEC 60320 C14                                            |
| AC output                                        | IEC 60320 C13                                            |
| DC output                                        | Anderson Powerpole®                                      |
| Communication                                    | USB Type B                                               |
| <b>Name Plate</b>                                |                                                          |
| Name plate rating                                | 110-240Vac, 8A, 50-60Hz                                  |
| <b>Battery Information</b>                       |                                                          |
| Maximum charging time from 0% to 100%            | < 90mins*                                                |
| Battery runtime                                  | 2 hours of typical device usage*                         |
| <b>Physical</b>                                  |                                                          |
| Battery type                                     | Lithium-ion                                              |
| Dimensions H x W x D (excluding mounting flange) | 90 x 430 x 280 mm / 3.5 x 16.9 x 11 in                   |
| Net weight                                       | 11 kg (24.3 lbs.)                                        |
| Color                                            | Gray                                                     |
| <b>Environmental</b>                             |                                                          |
| Operating environment                            | 5 – 122 °F (-15 – 50 °C)                                 |
| Operating relative humidity                      | 0 – 95% non-condensing                                   |
| Operating elevation                              | 0-10000 feet (0-3000 meters)                             |
| Audible noise at 1 meter from surface of unit    | < 40 dB                                                  |
| <b>Conformance</b>                               |                                                          |
| Safety - system                                  | UL/CSA 62368-1; IEC 62368-1                              |
| Safety - battery                                 | UL2054; IEC62133_Ed2                                     |
| EMI / EMC                                        | FCC Part 15 subpart B Class A & ICES 003 Issue 6 class A |
| Certification                                    | cTUVus, FCC, BC; CE                                      |
| Transportation                                   | UN38.3                                                   |
| Warranty                                         | 3 years                                                  |

\* Maximum charging time and battery runtime are based on APC Charge functioning at nominal operating conditions (110 Vac I/P & 23°C ambient).

Life Is On



Learn more today!

[apc.com/hub2](https://apc.com/hub2)

**Schneider Electric**

One Boston Place  
Floor 27  
Boston, MA 02108  
United States  
[www.apc.com](https://www.apc.com)

