

# ADVANTAGE LINDY

## USB EXTENSION REIMAGINED

**100m USB 3.2 GEN 1  
CAT.6A HDBaseT EXTENDER**



DISCOVER **LINDY**  
lindy.com



# 100m USB 3.2 GEN 1 CAT.6A HDBaseT EXTENDER

The feature packed, professional USB 3.2 extension system



## Struggling with distance limitations in your USB setup?

The Lindy USB 3.2 Gen 1 Cat.6A HDBaseT Extender eliminates barriers, extending connections up to 100m while maintaining class-leading performance. Perfect for applications such as industrial automation, healthcare, AV integration, and retail, this powerful extender ensures seamless data transfer, device control, and power delivery.

### AT A GLANCE

#### ULTRA LONG DISTANCE PERFORMANCE

Enjoy flawless connectivity over distances up to 100m, ensuring peak performance without interruptions.

#### MULTI-USB SIGNAL MANAGEMENT

Effortlessly handles multiple signal types, making it perfect for complex AV, UCC, and industrial setups that demand high reliability.

#### VERSATILE DEVICE SUPPORT

Seamlessly integrates with a wide range of USB devices, from conference cameras and interactive whiteboards to storage solutions and KVM setups.

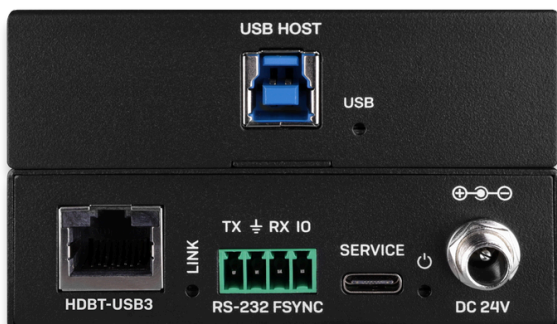
#### SUPERIOR BY DESIGN

Engineered for robust, high-speed data transfer, ideal for mission-critical applications.

## IN MORE DETAIL

The Lindy USB 3.2 Gen 1 Cat.6A HDBaseT Extender is designed to deliver seamless, high-performance connectivity over distances of up to 100 metres using a standard Cat.6A cable.

Powered by state-of-the-art HDBaseT technology, this extender ensures reliable, professional-grade performance, supporting data transfer speeds up to 5Gbps. Perfect for integrating a wide array of USB peripherals, from conference room cameras and interactive whiteboards to video capture devices and storage solutions.



With backwards compatibility for USB 2.0 and 1.1 devices, it's the ideal solution for mixed-device environments. Plus, the 'Power over Cable' feature streamlines your setup, requiring only one power supply—whether at the transmitter or receiver—offering maximum flexibility and easy installation for even the most complex applications.

## CONNECTIONS

### TRANSMITTER

- Inputs: USB Type B (female)
- Outputs: RJ45 (female)
- Power Supply: 5.5/2.1 mm DC jack
- Control Ports: RS-232 4-Pin Terminal Block



Back



Front



Back



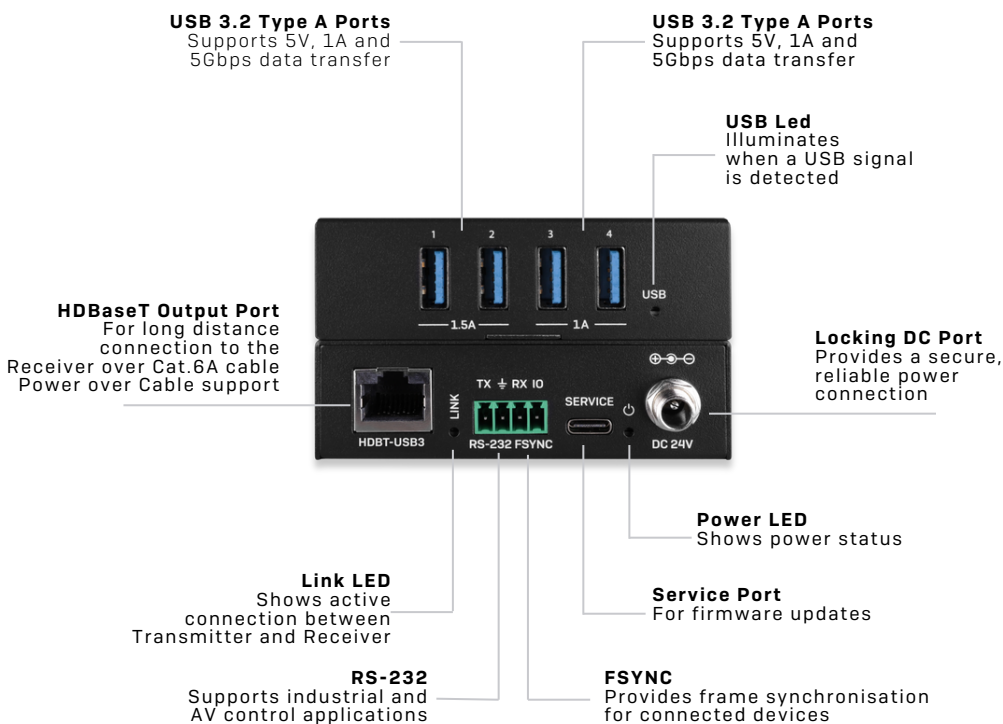
Front

### RECEIVER

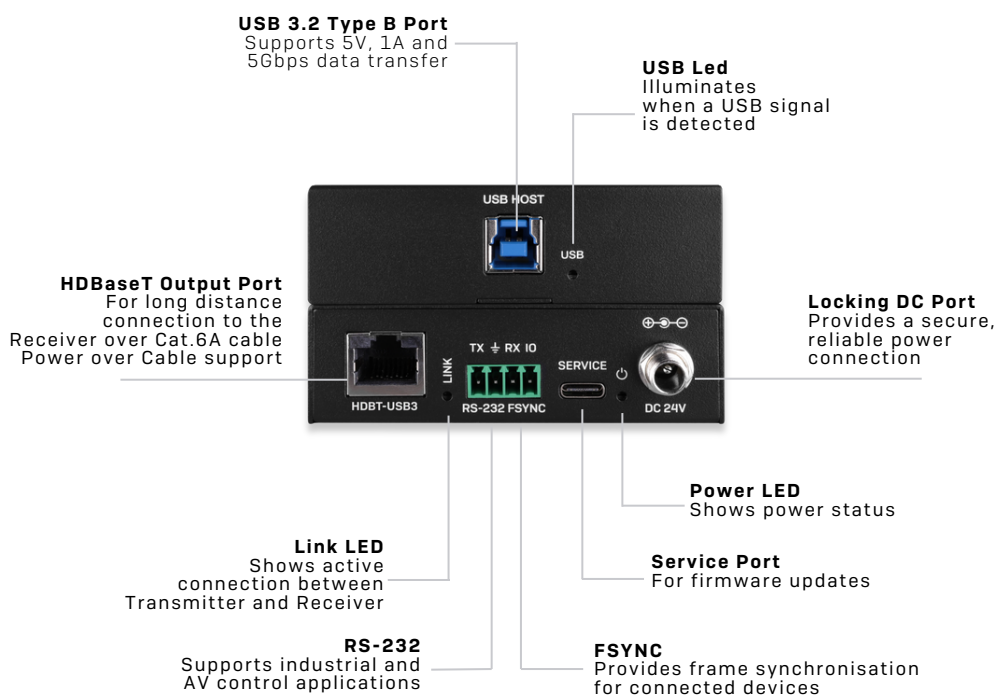
- Receiver Inputs: RJ45 (female)
- Receiver Outputs: 4 x USB Type A (female)
- Power Supply: 5.5/2.1 mm DC jack
- Control Ports: RS-232 4-Pin Terminal Block

## CONNECTION OVERVIEW

### RECEIVER



### TRANSMITTER



## APPLICATIONS



Broadcasting & Media Production



Education & Training Facilities



Retail & Point of Sales



Healthcare & Medical Imaging



Security & Surveillance

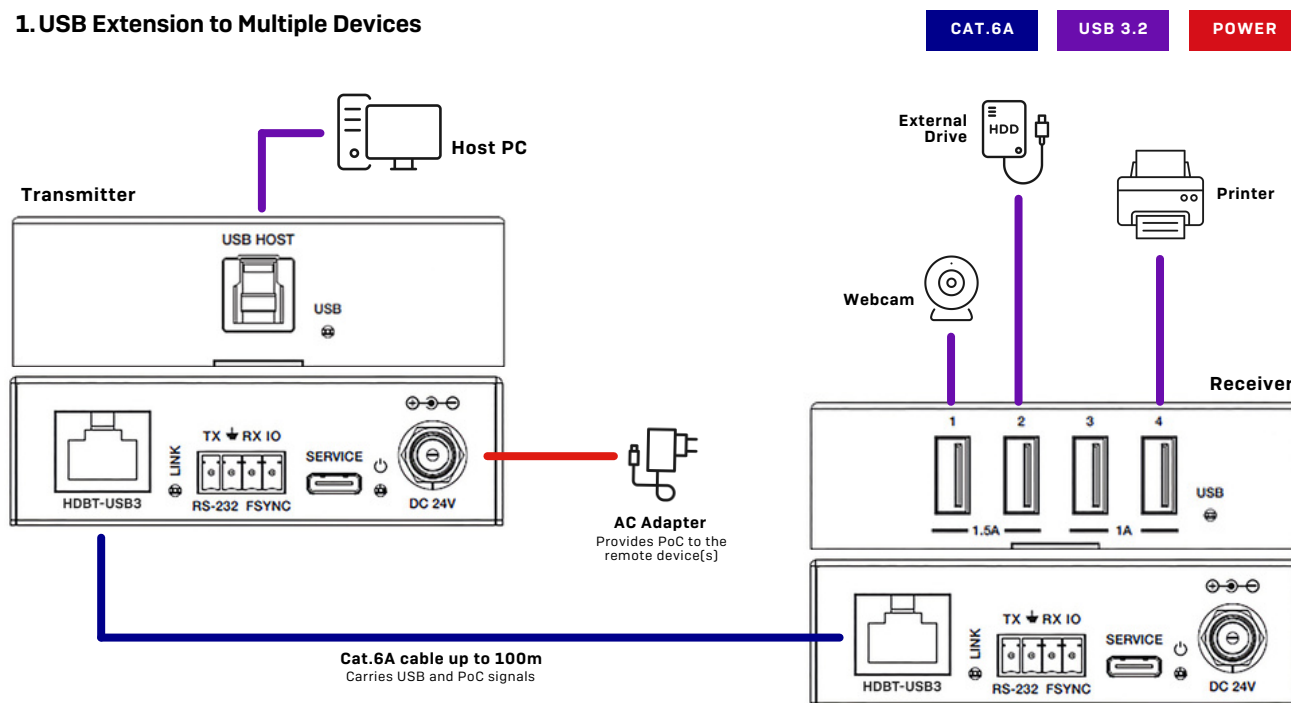


Logistics & Warehouse

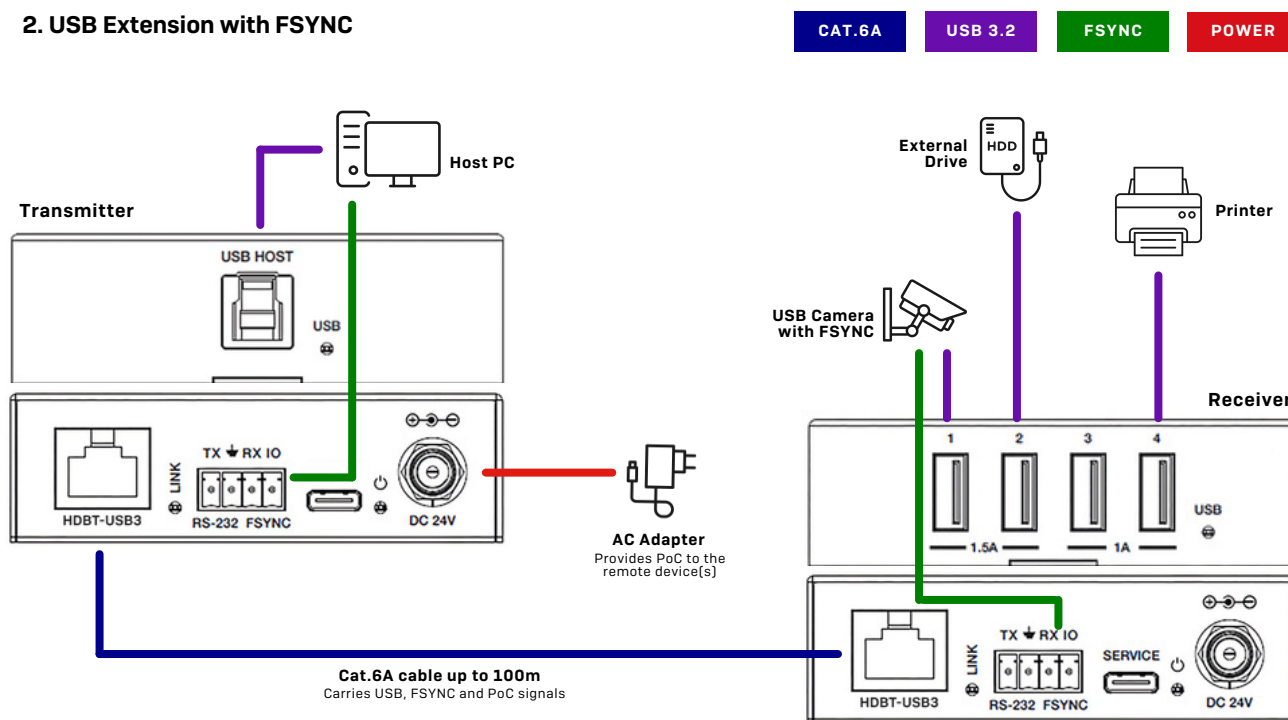


## EXAMPLE APPLICATIONS

### 1. USB Extension to Multiple Devices



### 2. USB Extension with FSYNC





## WHAT'S INCLUDED

- Transmitter
- Receiver
- 1m USB 3.2 Gen 1 cable (Type A to B)
- 2x4-Pin Terminal Block
- Multi-country power supply (EU, UK, US & AUS)
- Mounting brackets
- Lindy manual

## FACTS & FIGURES

- USB Standard: USB 3.2 Gen 1
- Supported Bandwidth: up to 5Gbps
- Maximum Range: 100 metres (328.08 ft)
- Transmission Medium: Cat.6A (or higher) network cable
- Chipset: VS6320
- Additional Features: Power over Cable, FSYNC, RS232 control, bulk, interrupt, and isochronous data transfer
- Dimensions: 85 x 100 x 30mm (WxDxH)
- Case Material: Metal
- Weight: 0.5 kg
- Operating Temperature: 0° - 40°C
- Storage Temperature: -20°C - 60°C
- Humidity: 20 - 90% RH (non-condensing)
- Power Consumption: 24VDC 2A
- Colour: Black





## TAKE THE ADVANTAGE: CHOOSE LINDY

The Lindy USB 3.2 Gen 1 Cat.6A HDBaseT Extender sets a new benchmark in USB extension solutions, delivering significant advantages over standard extension technology. It outperforms competing products in distance, feature set, stability, and overall cost-effectiveness.

Designed for professional-grade applications, this extender offers exceptional reliability, making it the ideal choice for even the most demanding environments. Take the advantage of superior connectivity and trust Lindy to power your next project.

Its ability to operate with a single power supply further enhances flexibility, simplifying installation and reducing power consumption. This means less clutter and more efficiency in any setup.

Not only is it more cost-effective, but it also surpasses the limitations of fibre-based USB 3.x solutions by incorporating advanced features like RS-232 and FSYNC. With support for Power over Cable and a broad range of USB standards and protocols, the Lindy extender offers straightforward Cat.6A field termination, making it a versatile and comprehensive solution for a variety of professional applications.



### CONTACT INFORMATION

LINDY Electronics Ltd.  
 w: [www.lindy.co.uk](http://www.lindy.co.uk)  
 t: 01642 75400  
 e: [sales@lindy.co.uk](mailto:sales@lindy.co.uk)



### WARRANTY INFORMATION

This products comes with a 2-year warranty.



### PRODUCT COMPLIANCE

This product complies with CE, UKCA, FCC, RoHS & REACH, CP65 standards.