

PHILIPS

LCD monitor

Business monitor

5000 series

24 (23.8" / 60.47 cm diag.)

1920 x 1080 (Full HD)

24B2G5301



Incredible efficiency meets ultra power-saving

This monitor is built for energy efficiency. The LightSensor and PowerSensor 2 features combine to make a power-saving monitor that is equipped with many other assets designed to facilitate work tasks.

Brilliant performance

- Built-in USB-C docking station
- IPS technology for full colours and wide viewing angles

Eco-friendly materials for sustainability

- 100% recyclable material and FSC-certified packaging
- Built with 85% PCR and 5% ocean-bound plastics

Energy efficiency - Eco-conscious power savings

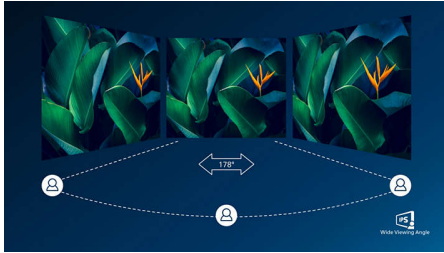
- PowerSensor 2: for optimised energy efficiency

Designed for comfortable productivity

- Eyesafe-certified blue light protection and colour accuracy
- SmartKVM: for easily switching between sources.
- SoftBlue Technology: for comfortable viewing
- MultiView enables simultaneous dual connection and view
- Less eye fatigue with Flicker-Free technology

Highlights

IPS technology



IPS displays use advanced technology that gives you extra-wide viewing angles of 178/178 degrees, making it possible to view the display from almost any angle — even in 90-degree Pivot mode! Unlike standard TN panels, IPS displays gives you remarkably crisp images with vivid colours, making it ideal not only for Photos, films and web browsing, but also for professional applications that demand colour accuracy and consistent brightness at all times.

Built-in USB-C docking station



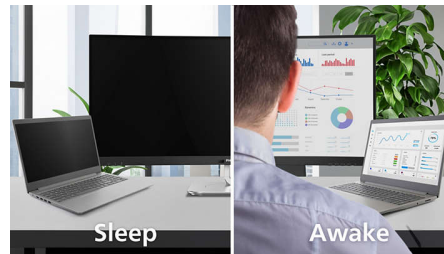
This Philips display features a built-in USB type-C docking station with power delivery. Its slim, reversible USB-C connector allows for easy, one-cable docking. Keep it simple by connecting all your peripherals, like your keyboard, mouse and your RJ-45 Ethernet cable to the monitor's docking station. Simply connect your notebook to this monitor with a single USB-C cable to watch high-resolution video and transfer super-speed data while powering up and recharging your notebook at the same time.

Eco-Friendly Packaging



This monitor is packaged in 100% recyclable material and is FSC-certified. This certification guarantees that the packaging is designed with a focus on environmental sustainability.

PowerSensor 2



This monitor's PowerSensor 2 feature reduces energy consumption by detecting when users move closer and further away from the screen. After switching the OSD setting to "User", you then need to adjust the settings in Windows 11 for this feature to function properly. When these adjustments are made, the monitor and connected PC/laptop will wake when someone approaches it and sleep when someone walks away, effectively reducing the amount of wake time. The distance for detection can be set to 50, 75 or 120 cm from the user's laptop. Please note that Windows 11 must be installed.

EcoSmart materials



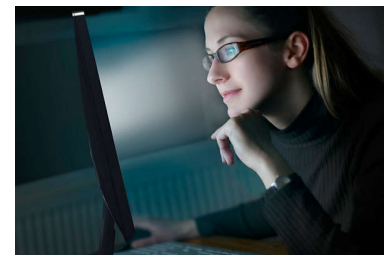
Being eco-friendly means repurposing old materials. That's why this Philips monitor is made with 85% post-consumer recycled plastics and 5% ocean-bound plastic, therefore making a concerted effort to reduce waste.

TUV Rheinland Eyesafe - RPF 40



Philips display meets the TUV Rheinland Eyesafe® standard to truly protect you from long exposure to blue light. The always-on blue light filter not only helps reduce digital eye strain, but also guarantees colour integrity.

SoftBlue Technology



SoftBlue LED technology, combined with the monitor's low blue light panel, is an effective solution to reducing the adverse health effects caused by high exposure to blue light. In this monitor's panel, the ratio of light is reduced by nearly 50 percent while the SoftBlue LED technology works simultaneously by reducing harmful blue light rays emitted from the screen. Additionally, the SoftBlue LED technology is tested and certified by TUV Rheinland Eyesafe for its effectiveness in reducing blue light emissions.



Highlights

Flicker-Free technology



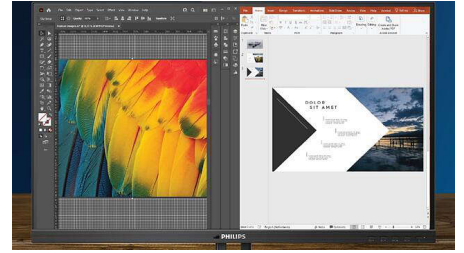
Due to the way brightness is controlled on LED-backlit screens, some users experience flicker on their screen which causes eye fatigue. Philips Flicker-Free technology applies a new solution to regulate brightness and reduce flicker for more comfortable viewing.

SmartKVM



Unlike traditional built-in KVM monitor buttons, the smart KVM allows for switching between sources with the click of a button on your keyboard. When all devices are properly connected, users can easily switch between sources by clicking the "Ctrl" key three times.

MultiView technology



With the ultra-high resolution Philips MultiView display, you can now experience a world of connectivity. MultiView enables active dual connect and view so that you can work with multiple devices like a PC and notebook simultaneously, for complex multitasking.

Specifications

Picture/Display

Panel Size: 23.8 inch/60.47 cm
Aspect ratio: 16:9
LCD panel type: IPS technology
Backlight type: W-LED system
Pixel pitch: 0.2745 x 0.2745 mm
Optimum resolution: 1920 x 1080 @ 60 Hz
Brightness: 300 cd/m²
Display colours: 16.7M (8 bit)
Colour gamut (typical): sRGB 110% , NTSC 96%*
Contrast ratio (typical): 1500:1
SmartContrast: 50,000,000:1
Response time (typical): 4 ms (Grey to Grey)*
Viewing angle: 178° (H)/178° (V), @ C/R > 10
Picture enhancement: SmartImage
Maximum resolution: 1920 x 1080 @ 100 Hz (HDMI/DP/USB-C)
Effective viewing area: 527.04(H) x 296.46(V) mm
Scanning Frequency: 30 - 115 kHz (H)/48 - 100 Hz (V) (HDMI/DisplayPort/USB-C)
sRGB
Flicker-free
Pixel Density: 93 PPI
Display Screen Coating: Anti-Glare, 3H, Haze 25%
EasyRead
Adaptive sync

Connectivity

Signal Input: HDMI 1.4 x 1, DisplayPort 1.4 x 1, USB-C (DP Alt mode), VGA (Analogue)
Sync Input: Separate Sync, Sync on Green
Audio (In/Out): Audio out
RJ45: Ethernet LAN (10M/100M/1G/2.5G)
Signal Output: DP out x 1
USB:: USB3.2, Gen2, 10G, Upstream: 1 x USB-C1 (Full), USB-C2 (data only) Downstream: USB-A x 4 (with x 1 fast-charge B.C 1.2), USB-C3 x 1 (data, 15 W)
HDCP: HDCP 1.4 (HDMI/DP/USB-C)
HBR3

Power Delivery

Max power delivery: Up to 100 W, 5 V/3 A, 7 V/3 A, 9 V/3 A, 10 V/3 A, 12 V/3 A, 15 V/3 A, 20 V/3.25 A, 20 V/4 A, 20 V/4.25 A, 20 V/4.8 A
Version: USB PD version 3.0

Convenience

Built-in Speakers: 3 W x 2
Plug and Play Compatibility: DDC/CI, Mac OS, sRGB, Windows 11/10
User convenience: SmartImage, Input, Brightness, Menu, Power On/Off
OSD Languages: Brazil Portuguese, Czech, Dutch, English, Finnish, French, German, Greek, Hungarian, Italian, Japanese, Korean, Polish, Portuguese, Russian, Simplified Chinese, Spanish, Swedish, Traditional Chinese, Turkish, Ukrainian
Other convenience: Kensington lock, VESA mount (100 x 100 mm), Earphone hook
Control software: SmartControl
MultiView: 2 x devices, PIP/PBP mode
KVM: Yes, USB-C1/USB-C2
SmartKVM

Stand

Height adjustment: 150 mm
Pivot: -/+ 90 degree
Swivel: -/+ 180 degree
Tilt: -5/35 degree

Power

ECO mode: 11.9 W (typ.)
Power supply: Built-in, 100–240 VAC, 50–60 Hz
Off mode: 0.3 W (typ.)
On mode: 14.18 W (typ.) (Energy Star test method)
Standby mode: 0.3 W (typ.)
Power LED indicator: Operation - White, Standby mode - White (flashing)
Energy Label Class: C

Dimensions

Packaging in mm (W x H x D): 615 x 385 x 139 mm
Product without stand (mm): 540 x 324 x 56 mm
Product with stand (max height): 540 x 501 x 232 mm

Weight

Product with packaging (kg): 7.84 kg
Product with stand (kg): 5.61 kg
Product without stand (kg): 3.89 kg

Operating conditions

Altitude: Operation: +12,000 ft (3658 m), Non-operation: +40,000 ft (12,192 m)
Temperature range (operation): 0°C to 40°C °C
Relative humidity: 20%-80 %
Temperature range (storage): -20°C to 60°C °C
MTBF (demonstrated): 70,000 hrs (excluded backlight)

Sustainability

Environmental and energy: PowerSensor 2*, LightSensor, Energy Star, EPEAT*, RoHS
Post-consumer recycled plastic: 85%+OBP 5%
Recyclable packaging material: 100 %
Specific Substances: PVC/BFR free housing, Mercury free

Compliance and standards

Regulatory Approvals: CB, CE Mark, TUV/GS, TUV Ergo, TCO Certified, UKCA, EMF, FCC, ICES-003

Cabinet

Finish: Texture
Foot: Silver
Front bezel: Charcoal
Rear cover: Charcoal

What's in the box?

Cables: HDMI cable, DP cable, USB-C to C/C cable, Power cable
Monitor with stand
User Documentation



* "IPS" word mark / trademark and related patents on technologies belong to their respective owners.
* The maximum resolution works for either HDMI input or DP input.
* Response time value equal to SmartResponse
* sRGB Area based on CIE1931, NTSC Area based on CIE1976.
* Please note that the PowerSensor 2 is only functional with Windows 11 installed. When PowerSensor 2 is activated, WAL means Walk Away Lock and WOA means Wake On.
* Fast charging complies with USB BC 1.2 standard
* EPEAT rating is valid only where Philips registers the product. Please visit <https://www.epeat.net/> for registration status in your country.
* The monitor may look different from feature images.
* The products and accessories listed on this leaflet may differ by country and region.