

# Enhanced productivity



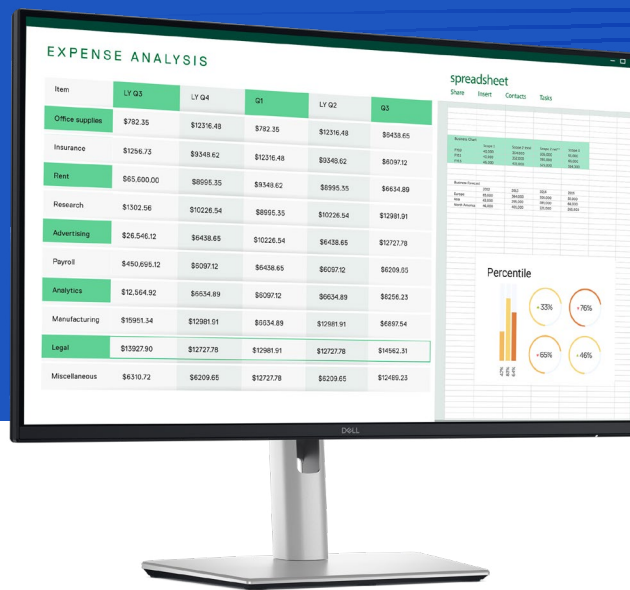
Dell Pro 24 Plus QHD Monitor

MODEL: P2425D

The world's # 1 monitor company\*

\*Dell monitors are #1 Worldwide for 10 years! Source: IDC Worldwide Quarterly PC Monitor Tracker, Q3 2024. From 2014 to 2024.

# 4-star certified monitor for eye comfort<sup>1</sup>



Get enhanced visual comfort and seamless connectivity with this 23.8-in QHD monitor.

## Enhanced eye comfort

This monitor achieves TÜV Rheinland® 4-star eye comfort certification — the latest industry standard for eye comfort to help reduce signs of eye fatigue.

Benefit from improved ComfortView Plus, a built-in feature that reduces blue light emission to  $\leq 35\%$  while allowing you to see vibrant colors with 99% sRGB coverage, and 100Hz refresh rate that delivers smoother and sharper motion visuals.

## Easy to connect

Connect your accessories across a variety of ports including DisplayPort 1.4, HDMI and front-facing, pop-out USB-C (with up to 15W charging) and USB Type-A ports.

## See your work clearly

With In-Plane Switching (IPS) technology, this monitor offers a wide 178°/178° viewing angle, so you can view your work with consistent color and image quality from virtually any angle.

Get deeper blacks and brighter whites with 1500:1 contrast ratio.

<sup>1</sup> Based off TÜV Rheinland® eye comfort certification.



**Enhanced eye comfort**

Stay productive while ensuring eye comfort. The 100Hz refresh rate delivers smooth motion visuals, and improved ComfortView Plus reduces harmful low blue light emissions while allowing you to see vibrant colors with 99% sRGB coverage.



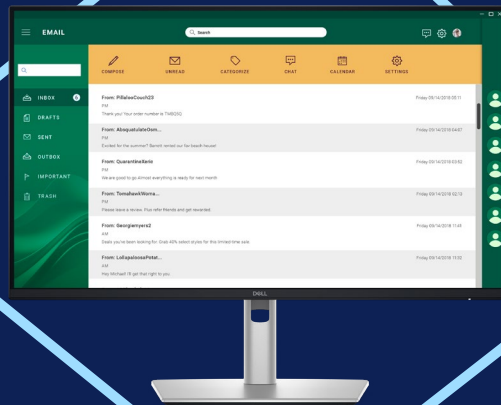
**A better view from anywhere**

See consistent images across wide viewing angles enabled by In-Plane Switching (IPS) technology and detailed images with 1500:1 contrast ratio on this QHD (2560 x 1440 resolution) monitor.



**Multi-task with ease**

Boost efficiency with Dell Display and Peripheral Manager that lets you organize multiple apps on your screen.



**Easy to connect**

Connect your accessories via a wide variety of ports including pop-out quick access USB-C (with up to 15W charging) and USB Type-A ports.

[Click here to explore more.](#)

**World's number 1 monitor company\***

We deliver world-class monitors that have gone through rigorous development processes and stringent tests to ensure dependable performance. Get peace of mind with unmatched warranty and support options. Being environmentally forward in thinking, our monitors adhere to environment standards and are made with sustainable materials.

\* Dell monitors are #1 Worldwide for 10 years! Source: IDC Worldwide Quarterly PC Monitor Tracker, Q3 2024. From 2014 to 2024.



# Environmentally-forward thinking

## Material innovation

Your monitor has been thoughtfully crafted with a selection of sustainable materials including up to 85% post-consumer plastic and closed-loop ITE-derived plastic<sup>1</sup>, 100% recycled aluminum<sup>2</sup>, 50% recycled steel<sup>3</sup> and at least 20% recycled glass<sup>4</sup> that make up to 31% recycled content by weight.<sup>5</sup> Using recycled materials helps conserve natural resources and contributes to a lower environmental footprint.

## Seamlessly modernize your tech

We can help you responsibly and securely retire your legacy IT equipment, regardless of brand, while addressing your sustainability goals.

## Environmental standards

This monitor is registered EPEAT Gold with Climate+, certified ENERGY STAR® and carries the latest TCO certified designation. With the new certification, this monitor is assured to be built using renewable energy while meeting high safety standards.<sup>6</sup>

## Packaging with purpose

This monitor ships in a box made from 100% renewable materials. We are reducing plastic waste wherever possible and transitioning to a responsible fiber-based solution.<sup>7</sup> Plus, we're saving over 600 trees each year by using less paper in packaging.<sup>8</sup>

<sup>1</sup> Percentage is based on plastic weight. Based on internal analysis, January 2025. Up to 67% post-consumer recycled plastic and up to 21% closed loop ITE derived plastic.

<sup>2</sup> Recycled aluminum is in the monitor stand. Based on internal analysis, January 2025.

<sup>3</sup> Recycled steel is in the monitor head and stand. Based on internal analysis, January 2025.

<sup>4</sup> Applicable to all new monitors launching in CY 2024. Recycled glass is present in monitor panel. Based on internal analysis, January 2024.

<sup>5</sup> Based on internal analysis, January 2025.

<sup>6</sup> EPEAT registered where applicable. EPEAT registration varies by country. See [www.epeat.net](http://www.epeat.net) for registration status by country.

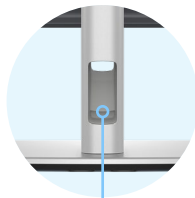
<sup>7</sup> Applies to all Dell monitors launched since 2023. Made from FSC mix sources which is a mix of material from FSC certified forests, recycled content and/or FSC controlled wood. Based on internal analysis, January 2025. Cushions now made from corrugated materials.

<sup>8</sup> Based on internal analysis, February 2025. Applies to monitors launching in 2025. Reductions based on monitor type and attributed to the quick start guide size and calibration sheet digitization. Calculation for trees saved based on: Detailed Calculator | 10 THOUSAND TREES. <https://www.omnicalculator.com/everyday-life/paper-weight>



# All day comfort

Get a seamless viewing experience and focus on your task with an ultra-thin bezel design.



### De-clutter your workspace

Free up your desk space with the small monitor base and hide cables from view by tucking them into the riser.



### Easy-to-use

Navigate the onscreen menu and adjust settings with a convenient joystick control.

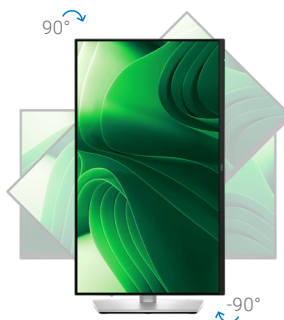


### Quick access ports

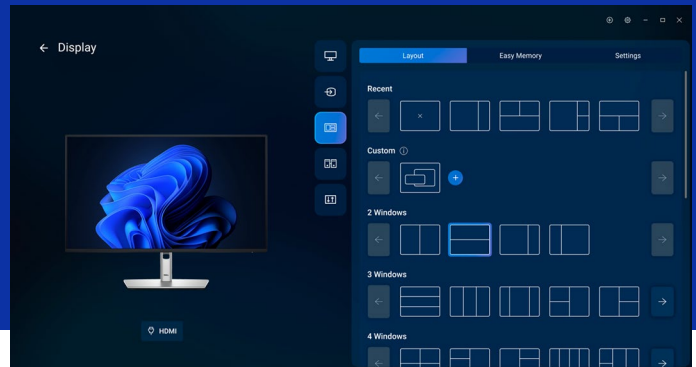
Front-facing, pop-out USB-C (with up to 15W charging) and USB Type-A ports for easy connectivity.

### Work comfortably

Designed for comfort and style with adjustability features.



# Dell Display and Peripheral Manager



Screen image simulated for illustrative purposes only. Monitor model varies.

Experience Dell's singular, innovative application to optimize the performance of your entire Dell PC workspace.<sup>1</sup>

## Maximize productivity

Easy Arrange tiles apps across screens with pre-set partitions and customizes up to five windows, enhancing multitasking. Easy Arrange Memory saves and restores app profiles manually, on schedule, or at start-up.

## Customize your views

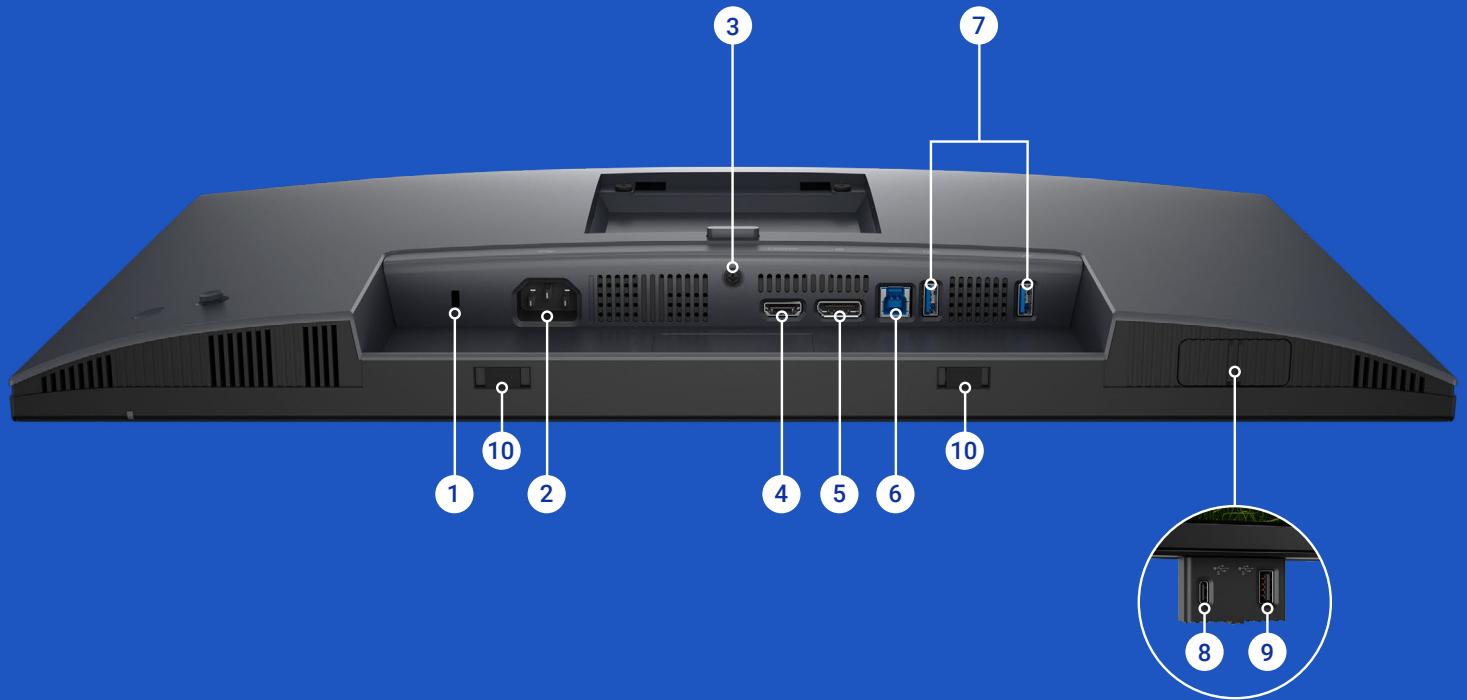
Work comfortably, day or night. Automate your brightness and contrast settings to match your schedule.

## More manageable

Scale up management across your entire fleet of Dell displays and client peripherals with expanded Command Line Interface features.

[Download Dell Display and Peripheral Manager](#)


# Ports & Slots



- 1** Security lock slot<sup>1</sup>
- 2** Power connector
- 3** Stand-lock
- 4** HDMI
- 5** DisplayPort 1.4
- 6** USB 5Gbps Type-B upstream

- 7** USB 5Gbps Type-A downstream (2)
- 8** USB-C 5Gbps downstream (Data only)
- 9** USB 5Gbps Type-A downstream
- 10** Soundbar slots

<sup>1</sup> Based on Kensington Security Slot™

FEATURE	TECHNICAL SPECIFICATION
MODEL	Dell Pro 24 Plus QHD Monitor - P2425D
DIAGONAL VIEWING SIZE	604.5 mm (23.8 in.)
PANEL TYPE	In-Plane Switching (IPS) Technology
MAXIMUM PRESET RESOLUTION AND REFRESH RATE	2560 x 1440 up to 100 Hz
VIEWING ANGLE	Horizontal: 178° Vertical: 178°
PIXEL PITCH	Horizontal: 0.2058 mm Vertical: 0.2058 mm
PIXEL PER INCH (PPI)	123
CONTRAST RATIO	1500:1 (typical)
ASPECT RATIO	16:9
BACKLIGHT TECHNOLOGY	LED Edgelight System
BRIGHTNESS	350 cd/m <sup>2</sup> (typical)
RESPONSE TIME	Normal mode: 8 ms (gray to gray) Fast mode: 5 ms (gray to gray)
COLOR GAMUT	sRGB 99% (CIE 1931) (typical)
COLOR DEPTH	16.7 million colors
TÜV EYECOMFORT	4 stars
CONNECTIVITY	Video port • 1 x HDMI port (HDCP1.4) (supports up to QHD 2560 x 1440 100 Hz TMDS as per specified in HDMI 2.1) • 1 x Display Port 1.4 (HDCP1.4)(Support up to 2560 x 1440 100Hz)  USB port • 1 x USB 5Gbps Type-B upstream port • 1 x USB-C 5Gbps downstream port • 3 x USB 5Gbps Type-A downstream ports
USB POWER DELIVERY	USB-C downstream port up to 15 W
ADJUSTABILITY	• Height adjustment up to 150 mm • Tilt -5°/+21° • Swivel -45°/+45° • Pivot -90°/+90°
DISPLAY SCREEN COATING	Anti-glare with hard-coating 3H
SOFTWARE COMPATIBILITY	Dell Display and Peripheral Manager (DDPM) for Windows
REMOTE ASSET MANAGEMENT	Yes, using DDPM
OPERATION TIME SUPPORT	8 hours a day, 5 days a week (8/5)
VOLTAGE REQUIRED	100 VAC to 240 VAC/50 Hz or 60 Hz ± 3 Hz/1.5 A
ENERGY EFFICIENCY CLASS (A TO G SCALE)	E 
POWER CONSUMPTION <sup>1</sup>	0.3 W (Off mode) 0.3 W (Standby Mode) 15.6 W (On Mode) 75 W (Max.) 15.9 W (Pon) 49.6 kWh (TEC)
BEZEL WIDTH – TOP	5.88 mm (0.23 in)
BEZEL WIDTH – LEFT OR RIGHT	5.93 mm (0.23 in.)
BEZEL WIDTH – BOTTOM	13.02 mm (0.51 in.)

FEATURE	TECHNICAL SPECIFICATION
DIMENSIONS (WITH STAND) – HEIGHT (EXTENDED)	496.55 mm (19.55 in.)
DIMENSIONS (WITH STAND) – HEIGHT (COMPRESSED)	364.00 mm (14.33 in.)
DIMENSIONS (WITH STAND) – WIDTH	538.70 mm (21.21 in.)
DIMENSIONS (WITH STAND) – DEPTH	181.54 mm (7.15 in)
DIMENSIONS (WITHOUT STAND) – HEIGHT	315.25 mm (12.41 in.)
DIMENSIONS (WITHOUT STAND) – WIDTH	538.70 mm (21.21 in.)
DIMENSIONS (WITHOUT STAND) – DEPTH	49.74 mm (1.96 in.)
STAND DIMENSIONS – HEIGHT (EXTENDED)	410.80 mm (16.17 in.)
STAND DIMENSIONS – HEIGHT (COMPRESSED)	364.00 mm (14.33 in.)
STAND DIMENSIONS – WIDTH	249.80 mm (9.83 in)
STAND DIMENSIONS – DEPTH	181.54 mm (7.15 in.)
WEIGHT WITH PACKAGING	7.04 kg (15.52 lb)
WEIGHT WITH STAND ASSEMBLY AND CABLES	5.08 kg (11.20 lb)
WEIGHT WITHOUT STAND ASSEMBLY (WITHOUT CABLES)	3.20 kg (7.05 lb)
WEIGHT OF STAND ASSEMBLY	1.47 kg (3.24 lb)
FLAT PANEL MOUNT INTERFACE	VESA (100 mm x 100 mm)
SECURITY	Security lock slot (cable lock sold separately) Anti-theft stand lock slot (to panel)
COMPLIANT STANDARDS	<ul style="list-style-type: none"> <li>ENERGY STAR 8.0</li> <li>EPEAT Gold with Climate+ TCO Certified and TCO Certified Edge</li> <li>RoHS-compliant</li> <li>Product Safety, EMC and Environmental Datasheets</li> <li>Dell Regulatory Compliance Home Page</li> <li>Dell and the Environment</li> <li>TÜV Rheinland Eye Comfort 4 Star</li> <li>BFR/PVC free monitor (excluding external cables).</li> <li>Meets NFPA 99 leakage current requirements.</li> <li>Arsenic-free glass and Mercury-free panel only</li> </ul>
TEMPERATURE RANGE	<ul style="list-style-type: none"> <li>Operating: 0°C to 40°C (32°F to 104°F)</li> <li>Non-Operating: -20°C to 60°C (-4°F to 140°F)</li> </ul>
HUMIDITY RANGE	<ul style="list-style-type: none"> <li>Operating: 10% to 80% (non-condensing)</li> <li>Non-Operating: 5% to 90% (non-condensing)</li> </ul>
ALTITUDE	<ul style="list-style-type: none"> <li>Operating: 5,000 m (16,400 ft) maximum</li> <li>Non-Operating: 12,191 m (40,000 ft) maximum</li> </ul>
WHAT'S INCLUDED	<ul style="list-style-type: none"> <li>Monitor with stand</li> <li>Power cable</li> <li>1 x DisplayPort to DisplayPort 1.4 cable - 1.80 m</li> <li>1 x HDMI 2.0 cable - 1.80 m (for Brazil, China, HK/TW/KR, &amp; Japan only)</li> <li>1 x USB Type-A to Type-B 5Gbps cable - 1.80 m</li> <li>QR card</li> <li>Safety, Environmental, and Regulatory Information</li> </ul>

<sup>1</sup> Off Mode, Standby Mode and On Mode as base on the ErP Lot 5 (EU 2019/2021 and EU 2019/2013) declared values which has been aligned with Regulatory.



# Steadfast reliability

As the No. 1 monitor company worldwide\*, we take pride in our unyielding commitment to quality and the utmost in customer satisfaction.

## Premium Panel Exchange

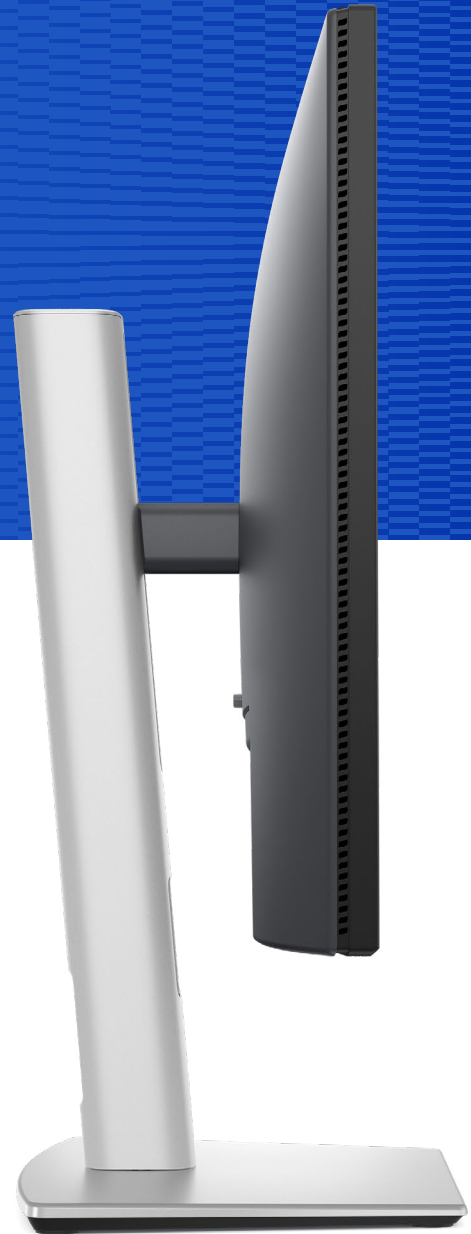
Dell Premium Panel Exchange<sup>1</sup> allows a free monitor replacement during the Limited Hardware Warranty<sup>2</sup> period even if only one bright pixel is found.

## Advanced Exchange Service

This monitor comes with a 3-year Advanced Exchange Service<sup>3</sup> so that if a replacement becomes necessary, it will be shipped to you the next business day during your 3-year Limited Hardware Warranty.<sup>2</sup>

## ProSupport

Upgrade to 24x7 specialized technical phone support with the Dell ProSupport option.<sup>4</sup>



\*Dell monitors are #1 Worldwide for 10 years! Source: IDC Worldwide Quarterly PC Monitor Tracker, Q3 2024. From 2014 to 2024.

1 Applicable to Dell UltraSharp and Dell Pro Plus desktop monitors.

2 For copy of Ltd Hardware Warranty, write to Dell USA LP, Attn: Warranties, One Dell Way, Round Rock, TX 78682 or see <https://www.dell.com/warranty>.

3 Advanced Exchange: Dell will send you a replacement monitor the next business day in most cases, if deemed necessary after phone/online diagnosis. Shipping times may vary by location and for monitors 55" and above. Fee charged for failure to return defective unit. See [dell.com/servicecontracts/global](https://dell.com/servicecontracts/global).

4 Availability varies, please visit [www.dell.com/support](https://www.dell.com/support) for details. In some countries, hours for in-region support may vary. Support after local business hours may be provided in a language other than the local language.

Technical specifications subject to change without prior notice. Product availability varies by country. Please contact your Dell representative for more information.

© 2025 Dell Inc. or its subsidiaries. All Rights Reserved. Dell Technologies, Dell, EMC, Dell EMC and other trademarks are trademarks of Dell Inc. or its subsidiaries. Other trademarks may be trademarks of their respective owners. USB Type-C® and USB-C® are registered trademarks of USB Implementers Forum. Thunderbolt and the Thunderbolt logo are trademarks of Intel Corporation in the U.S. and/or other countries.