



UK
CA

CE



Disposal and recycling information



The crossed-out wheeled bin symbol means that this product must be disposed separately from household waste. As an end user, you are obliged to dispose the product in accordance with the respective national regulations for separate collection, for example by depositing it at an official collection point. Returning it to the retailer is also possible if the distributor offers voluntary return or is legally obliged to do so.

Separate collection is a valuable contribution to the protection of the environment and human health, as the proper treatment of waste equipment avoids potential negative effects caused by the presence of hazardous substances and protects raw materials by recovering them.

In addition, please note that waste prevention makes an even more valuable contribution to environmental protection. Where possible, therefore, in addition to continued own use or repair, handing over to secondary users is an ecologically valuable alternative to disposal.

Bechtle Logistik & Service GmbH

Bechtle Platz 1

74172 Neckarsulm

Germany

4682486

4-port USB Hub 2.0 + 3.0, Type-C



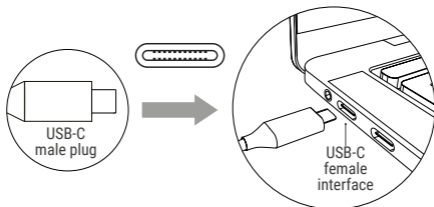
Please read these instructions
carefully before using the product
and store them properly.

 **ARTICONA**

Operating introductions

With this USB Hub, you can expand your Interface options to your notebook, laptop, UMPC (Ultra Mobile Personal Computer), tablet, smartphone or your handheld console.

You only need a free USB-C interface to install this USB Hub.



Info:

Each device you connect to the passive USB hub will reduce the maximum bandwidth per connection.

USB hubs are not made for USB power adapters, use the USB hub only with compatible devices.

Use the USB Hub only with technically compatible devices and use it only inside a building. Protect the device from heat, coldness and humidity. Do not spray detergents on the device, only use a dry cleaning cloth for cleaning. In the case of heavy soiling, moisten the cleaning cloth only slightly with water and then clean your device. Do not open the device and do not carry out any other repairs on the device by yourself. In the event of improper use or if a defect is your own fault, no warranty claims or other guarantee claims can be applied.

Technical parameters

Suitable ambient temperature: 0°C – 45°C.

Under heavy use the heat loss of the USB Hub is higher, make sure there is a good air circulation and remove the docking station if the heat development is too high and does not decrease.

- Connections: USB-A plug to 4× USB-A jack
- 3× USB-A hub bandwidth up to 480 Mbit/s
- 1× USB-A hub Bandwidth up to 5 Gbit/s
- Plug and play, backward compatible, compact design

- Housing material:
ALU, additional protection against interference signals
- Material cable sheath: PVC
- Color: spacegrey

Package contents

- 1× USB Hub
- 1× user manual