

# ThinkCentre M90t Gen 3

The ThinkCentre M90t Gen 3 tower desktop is engineered for awe-inspiring computing performance, with up to Intel vPro® Enterprise with 12<sup>th</sup> Generation Intel® Core™ i9 processors for uncompromised productivity, unique security technology, and business continuity. For administrative tasks to data-intensive projects, this powerful 17L desktop delivers versatile connectivity with enhanced I/O ports and expansion slots, as well as innovative device collaboration using the new Smart Cable.

Intel® Wi-Fi 6E<sup>1</sup> means faster data transfer and reduced videoconferencing latency perfect for the hybrid workforce, while ThinkShield end-to-end protection and the chip-level security of the Intel vPro® platform keeps data and users safe. The Smart Power On feature and Modern Standby ensure an enhanced user experience, and the green certifications and use of recyclable materials create an eco-friendly device.

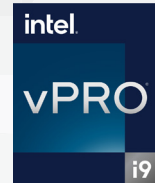
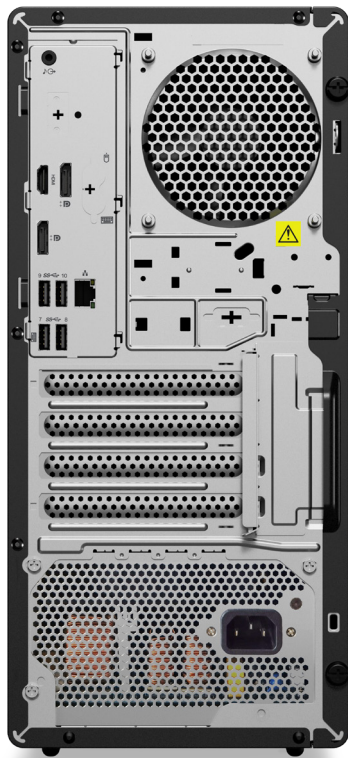
<sup>1</sup>16GHz Wi-Fi 6E operation is dependent on the support of the operating system, routers/APs/Gateways that support Wi-Fi 6E, and the regional regulatory certifications and spectrum allocation.



Smarter  
technology  
for all

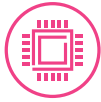
Lenovo

# ThinkCentre M90t Gen 3



	Previous Gen	Current Gen	Gen-to-Gen
Platform, Processor & Chipset	Intel vPro® / Up to 10 <sup>th</sup> Gen Intel® Core™ i9-10900 (65W) / Intel® Q470	Intel vPro® / Up to 12 <sup>th</sup> Gen Intel® Core™ i9-12900K (125W) / Intel® Q670	10%-15% enhanced performance; uncompromised computing capability
Memory	4x DDR4 UDIMM, 2933MHz	4x DDR5 UDIMM, up to 4400 MHz	Better memory with faster frequencies
Rear IO Ports	1x DP + 1x DP 1x Serial + Optional 1x Serial 1x Flex I/O (DP/HDMI/Type-C)	1x DP + 1x DP + 1x HDMI 2.1 TMDS Optional 2x Serial 1x Flex IO (DP/HDMI/Type-C/VGA)	Versatile connectivity with more types of ports for more flexibility
Expandibility	1 x PCIe x16 Gen 3 1 x PCIe x16 (x4 link) Gen 3 1 x PCIe x1 2x M.2 SSD Gen 3	1 x PCIe x16 Gen 4 1 x PCIe x16 (x4 link) Gen 4 2 x PCIe x1 2x M.2 SSD Gen 4	Extended PC functionality to connect extra devices with up to twice the speed
Security	Intel vPro® Enterprise Level 1 Self-healing BIOS	Intel vPro® Enterprise Level 2 Self-healing BIOS	Enhanced security and manageability features
Environmental Certifications	TCO 8.0	TCO 9.0	Improved focus on sustainability

# ThinkCentre M90t Gen 3



## PREMIUM PERFORMANCE

Engineered for high-velocity productivity across industries, the ThinkCentre M90t Gen 3 boasts up to Intel vPro® Enterprise with 12<sup>th</sup> Generation Intel® Core™ i9 processors. With up to four DDR5 UDIMM (max. 4400MHz) and up to 128GB memory support packed in this 17L chassis, complex data tasks and graphics projects can be tackled with confidence. Plus, with expanded I/O ports and the ability to connect up to four displays, any workspace can be customized for the multitasking at hand.



## SECURE PROTECTION

Lenovo ThinkShield plus the Intel vPro® Enterprise provides a combination of hardware, software, and platform-level security for next-gen data and business protection. The dTPM 2.0 chip encrypts passwords and data, while BIOS-based Smart USB protection and individual USB port disablement prevent unauthorized access via peripheral. And with the Kensington™ Lock slots, chassis e-locks, and more options to provide physical security, the ThinkCentre M90t Gen 3 delivers end-to-end protection for work from anywhere.



## EXPANDABLE VERSATILITY

The ThinkCentre M90t Gen 3 offers multiple I/O ports and flexible expansion slots to customize any workspace, including the support of up to four additional displays. Get innovative device collaboration with the Smart Cable for easy USB-A and USB-C connection to support all your peripherals, even another laptop or tablet. Optional solid-state drive (SSD) storage offers speed and responsiveness, while 3D NAND technology gives your SSD more reliable performance and improved power consumption.



## ENVIRONMENTAL SUSTAINABILITY

The ThinkCentre M90t Gen 3 meets the highest environmental standards, including TCO 9.0<sup>1</sup> and EPEAT™ Gold. Lenovo is committed to creating eco-friendly products using recyclable, toxic-free components in every device. Plus, by 2025/26, 90% of PC products' packaging will be made from recycled materials.

<sup>1</sup>Varies by configuration.



## purposeful design

The ThinkCentre M90t Gen 3 tower desktop provides intentional efficiency features like Smart Power On that allows users to turn on the desktop using a simple keyboard shortcut, plus front-facing I/O ports for quick and easy connections.

## trusted quality

Because it meets MIL-STD 810H guidelines with 12 methods and 20 procedures, the ThinkCentre M90t Gen 3 reflects Lenovo's dedication product quality, durability, and reliability. Tested against real-world challenges like volt surges, vibration, and extreme temperatures, this desktop is ready for anything.

## relentless innovation

We are inspired by our customers and what they want from our devices, and it shows in gen-to-gen improvements like security features, easy-to-access I/O ports—and more of them—enhanced memory, and more.

# ThinkCentre M90t Gen 3

## Services

Lenovo offers a comprehensive portfolio of end-to-end services to support and protect your investment—so you can focus on the job at hand, not IT.



### PREMIER SUPPORT

Premier Support provides direct 24x7x365 access to elite Lenovo engineers for comprehensive hardware and OEM software support, priority on service delivery, repair of parts, and many more. This ensures that customers' issues and concerns are resolved quickly, saving them costs and enhancing productivity.



### CO<sub>2</sub> OFFSET SERVICES

Make offsetting carbon emissions simple and within your control. You can use this service to compensate for environmental impact based on realistic emissions over an average product lifecycle. It is offered as an option at point of purchase, with tangible proof of CO<sub>2</sub> emission that offset.



### DEVICE AS A SERVICE (DaaS)

Combine hardware, services, and software into a single, flexible solution to maintain predictable monthly costs. This innovative, fully managed model drives down capital IT expenses while ensuring your employees experience the latest technology to keep them secure and productive.

## Accessories

### Lenovo Performance FHD Webcam

The built-in dual microphones provide clear audio that you can count on. It feeds or streams its image in real-time through a computer to a computer network, and also delivers fast and secure facial recognition for Windows Hello.



PN: 4XC1D66055

### Lenovo Go Wired Speakerphone

The Lenovo Go Wired Speakerphone brings enterprise-grade conferencing and audio to the remote workforce. In one portable plug-and-play solution, you can hold natural conference calls optimized by advanced voice-first algorithms.



PN: 4XD1C82055

### Lenovo Essential Wireless Keyboard and Mouse

This combo allows you to connect both keyboard and mouse using only one nano USB wireless receiver. The slim, wireless keyboard has a responsive key feeling, and includes an adjustable tilt leg, numeric keypad, and spill resistant design. The full-size wireless mouse accommodates left- and right-handed users.



PN: 4X30M3xxx



# ThinkCentre M90t Gen 3

## performance

### PROCESSOR

Intel vPro® Enterprise  
with 12<sup>th</sup> Generation Intel® Core™ i9 processors

### OPERATING SYSTEM

Windows 11 (Pro & Home)  
Windows 11 Downgrade (Pro)  
Windows 10 IoT

### GRAPHICS

Intel® UHD Graphics 770 / 730 / 710  
Intel® Iris® X<sup>e</sup> MAX Graphics DG1E  
AMD Radeon™ RX 6400  
Intel® Arc A380 Graphics  
NVIDIA GeForce GTX1660 Super  
NVIDIA GeForce RTX3050  
NVIDIA GeForce RTX3060  
NVIDIA GeForce RTX3070Ti

### MEMORY

4 x DDR5 UDIMM (up to 4400MHz/128GB)

### PSU

750W 92%, 500W 92%, 300W 90%

## connectivity

### FRONT PORTS

1x USB-C 3.2 Gen 2  
2x USB-A 3.2 Gen 2  
2x USB-A 3.2 Gen 1  
Optional Card Reader (3 in 1)  
1x Audio Combo + 1x Mic

### REAR PORTS

4x USB-A 3.2 Gen 1  
1x Flex IO (DP/HDMI/Type-C/VGA)  
1x DP + 1x DP + 1x HDMI 2.1 TMDS  
2x Optional Serial  
1x LAN (1G)  
1x Audio-out  
2x Optional PS2  
1x Optional Parallel  
2x Optional USB 2.0

### EXPANSION SLOT

1x PCIe x16 Gen 4  
1x PCIe x16 (x4 link) Gen 4  
2x PCIe x1

### M.2 SLOT

2x M.2 SSD Gen 4  
1x M.2 Wi-Fi

### INTERNAL BAY

2x 3.5" HDD  
1x 2.5" HDD

### EXTERNAL BAY

1x Slim ODD

### WI-FI

Intel® Wi-Fi 6E<sup>1</sup> 2x2 AX  
Intel® Wi-Fi 6 2x2 AX

## security

Intel vPro® Enterprise  
dTPM 2.0 chip  
EC Self-healing (level 2)  
BIOS-based Smart USB Protection  
Padlock Loop  
Kensington™ Lock  
Chassis E-Lock (optional)  
Smart Cable Clip (optional)

## design

### EOU

Yes

### DIMENSIONS

376 x 170 x 298 mm / 14.8 x 6.7 x 11.7 in

### WEIGHT

6.5 kg / 14.33 lbs

## manageability

Supports up to 4 monitors  
4-port COM Add-on Card  
Smart Power On

## green certifications

Energy Star® 8.0  
EPEAT™ Gold  
RoHS  
ERP LOT 3  
TÜV Ultra Low Noise  
TCO 9.0<sup>2</sup>

<sup>1</sup>16GHz Wi-Fi 6E operation is dependent on the support of the operating system, routers/APs/Gateways that support Wi-Fi 6E, and the regional regulatory certifications and spectrum allocation.

<sup>2</sup>Various by configuration.