

RT10 SERIES RUGGED TABLET

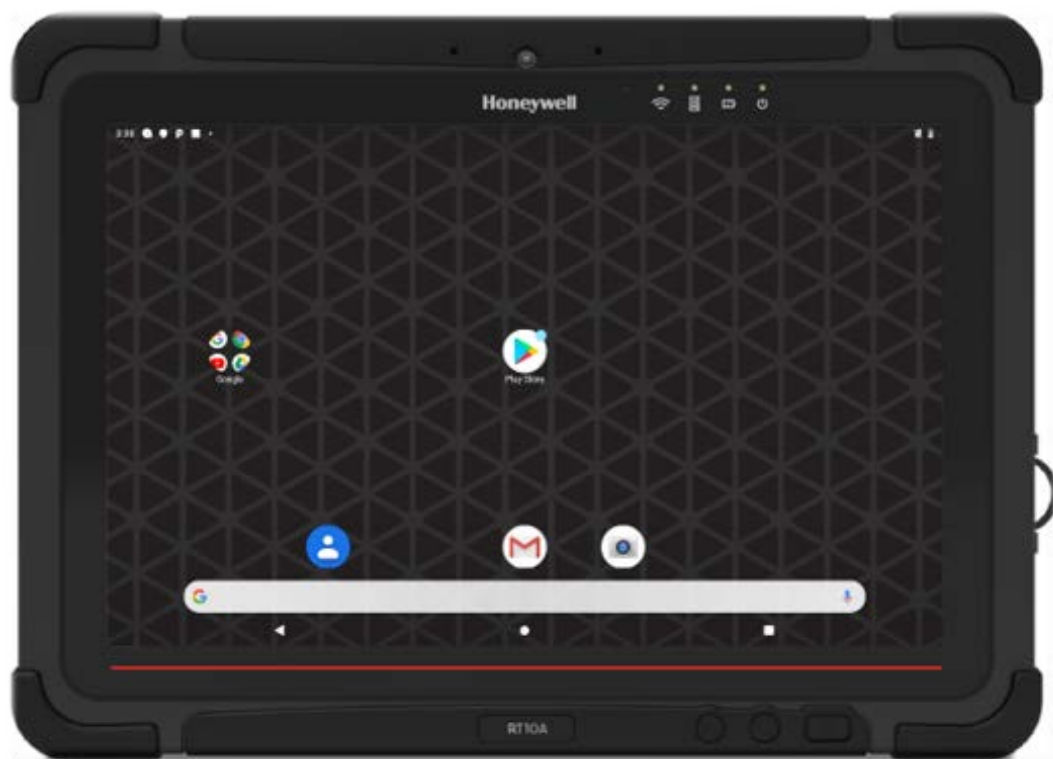
Accessories Guide



Honeywell

TABLE OF CONTENTS

- 2 Power and Batteries
- 2 Power and Adapters
- 2 Chargers
- 3 Docks and Cradles
- 3 Keyboards
- 4 Miscellaneous
- 5 Vehicle Mount Parts



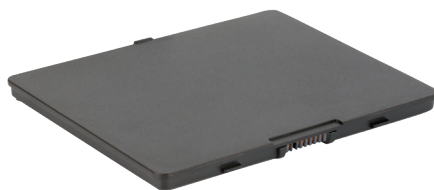
POWER AND BATTERIES



RT10-PWR

RT10 Power Adapter

Spare power adapter. 100–240V AC to 19V DC at 3.42A. Requires country-specific cord.



RT10-BAT-STD1

RT10 Standard Battery

Spare standard battery. 7.4V, 5900 mAh Li-Polymer battery. 276 g (9.7 oz) weight, 11 mm (0.4 in) thick.



RT10-BAT-EXT1

RT10 Extended Battery

Spare extended battery 7.4V, 10280 mAh Li-Polymer. Battery 474g (16.7 oz) weight, 15 mm (.6 in) thick

POWER CABLES / ADAPTERS

RT10-PWR-CABLE-EU

C6 type power cable, Europe

RT10-PWR-CABLE-DMK

C6 type power cable, Denmark 3-pin

RT10-PWR-CABLE-ITA

C6 type power cable, Italy 3-pin

RT10-PWR-CABLE-IND

C6 type power cable, India

RT10-PWR-CABLE-CN

C6 type power cable, China

RT10-PWR-CABLE-SA

C6 type power cable, South Africa



RT10-PWR-CABLE-UK

C6 type power cable, UK 3-blade

RT10-PWR-CABLE-SWI

C6 type power cable, Switzerland 3-pin

RT10-PWR-CABLE-AUS

C6 type power cable, Australia

RT10-PWR-CABLE-US

C6 type power cable, United States



RT10-VM-POWER-CVRT (Available late Q4 2020)

Adapter cable to convert Thor VM series power supply connections to the RT10-VD or RT10-VC 3-pin terminal block power input.

CHARGERS



RT10-BC-2

RT10 2-Bay Battery Charger

2-bay battery charger for standard or extended batteries. 12–19V DC in power. Standard battery charges in 3 hours, extended battery charges in 6 hours. Connect up to 3 units to charge 6 batteries at once.

Kit includes: 1x 2-bay battery charger, 1x 19V AC adapter. Requires country-specific power cable..



RT10-MC

RT10 Vehicle Charger with Cigarette Header

Vehicle charger/cigarette lighter adapter. 11–32V DC in, 19V/3.42A DC out.

DOCKS AND CRADLES



RT10-CD

RT10 Office Communications Dock

Desk dock, Supports 19V DC power supply, not included.

Ports: 2x USB 2.0 side, 2x USB 2.0 rear, RS-232, 1x RJ45 Ethernet, VGA, RT10 pogo-pin dock connector.



RT10-VD

RT10 Vehicle Dock with Power Cable

Vehicle dock, 3-pin terminal block 9–36V power supply. Power adapter cable included. Easy insert and release with key-lock.

Ports: 4x USB-A, 1x RS-232, 1x RJ45 Ethernet, 1x GPS antenna, RT10 pogo-pin dock connector.

75 mm x 75 mm (2.95 in x 2.95 in) VESA mount.

Vibration: MIL-STD-810G, 5–500 Hz, 2.24G.



RT10-VC

RT10 Vehicle Cradle

Vehicle cradle – power only. 3-pin terminal block 9–36V power supply. Power adapter cable included. Easy insert and release with key- lock. RT10 pogo-pin dock connector. 75 mm x 75 mm (2.95 in x 2.95 in) VESA mount.

Vibration: MIL-STD-810G, 5–500 Hz, 2.24G.



RT10-EVD

RT10 Enhanced Vehicle Dock (Available late Q4 2020)

Vehicle dock, VM compatible 10–60V power supply. Easy insert and release with key-lock.

Ports: 2x USB-A, 2x RS-232, 1x D-9 USB, 1x D-15 USB, RT10 pogo-pin dock connector, 1x RJ45 Ethernet connector.

75 mm x 75 mm (2.95 in x 2.95 in) VESA mount.

Vibration: MIL-STD-810G, 5–500 Hz, 2.24G.



RT10-EVC

RT10 Enhanced Vehicle Cradle (Available late Q4 2020)

Vehicle cradle – power only. Vehicle-mount compatible 10–60V power supply. Easy insert and release with key-lock. RT10 pogo-pin dock connector. 75 mm x 75 mm (2.95 in x 2.95 in) VESA mount.

Vibration: MIL-STD-810G, 5–500 Hz, 2.24G.



RT10-DD

RT10 Display Dock (Available in late Q4 2020)

Display dock for connecting to external monitor. Ports: 1x RJ45 Ethernet, 4x USB-A, 1x HDMI, RT10 pogo-pin dock connector. Supports 12–19V power supply and power cord not included.

KEYBOARDS



9000160KEYBRD

Windows Laptop Style 95 key rugged keyboard with integrated 2 button mouse, DB9M USB Interface.



9000161KEYBRD

Numeric Keypad

Numeric keypad, 21-key, USB interface; large keys make it ideal for glove use.

MISCELLANEOUS



RT10-HS-1

RT10 Hand Strap

Hand strap kit including screws. Adjustable for standard or extended battery sizes.



RT10-SS-1

RT10 Shoulder Strap

Shoulder strap kit including screws. Adjustable cross-body strap with pad.



RT10-CASE

RT10 Carrying Case

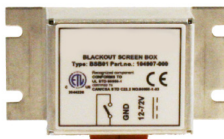
Carry bag with hand carrier and adjustable shoulder strap. Separate pocket for accessories.



RT10-STY-1

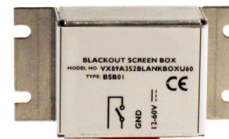
RT10 Capacitive Stylus with Tether

Replacement capacitive stylus with tether.



VX89351PWRSPLY

Screen blanking switch box, universal.



VX89352PWRSPLY

Screen blanking switch box, for China only.



RT10-CAC

RT10 Smart Card Reader

Smart card reader. Snaps on to the back of the tablet.



RT10-SCREEN-FILM1
(Available late Q4, 2020)

Protective screen for RT10, pack of 1. (PET material)



RT10-KEYBD-PLATE

Keyboard adapter for vehicle dock installations. Attaches to vehicle docks.

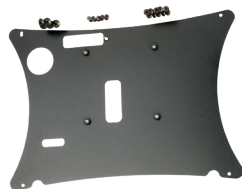
VEHICLE MOUNT PARTS



RT10-MNT-RAM

RT10 Mounting Kit

Connects to a RAM mount 75x75mm VESA Plate with 2.25" diameter rubber ball "D" size..



RT10-MNT-VS

RT10 VESA Mount

75 mm x 75 mm (2.95 in x 2.95 in) VESA mount kit. SGCC-grade steel. Includes 5x M4 6 mm (0.2 in) round screws, 5x M3 5 mm (0.2 in) round screws.



RT10-2012BRKTKIT

RAM Mount kit, Round base

Medium arm 8.5inch (215 mm) , C-Balls (QTY 2), Mounting plate, Keyboard. For mounting to RT10 vehicle docks.



RT10-2015BRKTKIT

RAM Mount kit, Clamp base

Medium arm 8.5inch (215 mm) , C-Ball, C-Clamp, Keyboard. For mounting to forklift pipe.

VEHICLE MOUNT PARTS Cont.



VX89A030RAMBALL

Ball, "D"-size 57.15 mm (2.25 in), round
93.47 mm (3.68 in) base, typically
mounts to vehicle.



VX89A031RAMBALL

Ball, "D"-size 57.15 mm (2.25 in),
flat
63.5 mm (2.5 in) clamp base,
typically mounts to vehicle.



VX89A032RAMBALL

Ball, "D"-size 57.15 mm (2.25 in), **120.65
mm (4.75 in) square base**, typically mounts to
vehicle.



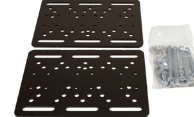
VX89A503RAMARM

RAM long arm, 330 mm (13 in) for
"D"-size
57.15 mm (2.25 in) balls.
to vehicle.



VX89535PLATE

Mounting plate, truckside for
attaching one
"D"-size ball. No ball included.



9000033PLATE

Backup plate (set of 2). Note: Hardware
included. These two plates can be mounted on
each side of the forklift roof. Various RAM
balls can be attached to these plates to avoid having
to drill mounting holes or weld to the forklift.



VX89A033RAMBALL

VX89A033RAMBALL Ball, "D"-
size 57.15 mm (2.25 in), clamp
base for 31.75 mm (1.25 in) to
47.63 mm (1.875 in) pipe mount,
typically mounts to vehicle.



VX89A041RAMBALL

VX89A041RAMBALL Ball, "C"-
size 38.1 mm (1.5 in), 63.5 mm
(2.5 in) round base.



VX89A504RAMARM

RAM medium arm, 145 mm (5.7 in), "C"-size
38.1 mm (1.5 in) balls.



VX89A504RAMARM

RAM medium arm, 145 mm (5.7
in), "C"-size 38.1 mm (1.5 in)
balls.



VX89A501RAMARM

RAM medium arm, 215 mm (8.5
in) for "D"-size 57.15 mm (2.25
in) balls.



VX89A501RAMARM

RAM short arm, 128 mm (5 in) for "D"-
size 57.15 mm (2.25 in) balls.

For more information

www.honeywellaidc.com

Honeywell Safety and Productivity Solutions

9680 Old Bailes Road
Fort Mill, SC 29707
800-582-4263
www.honeywell.com

RT10 Series Rugged Tablet Accessories Guide | 09/28 ©
2020 Honeywell International Inc.

THE
FUTURE
IS
WHAT
WE
MAKE IT

Honeywell