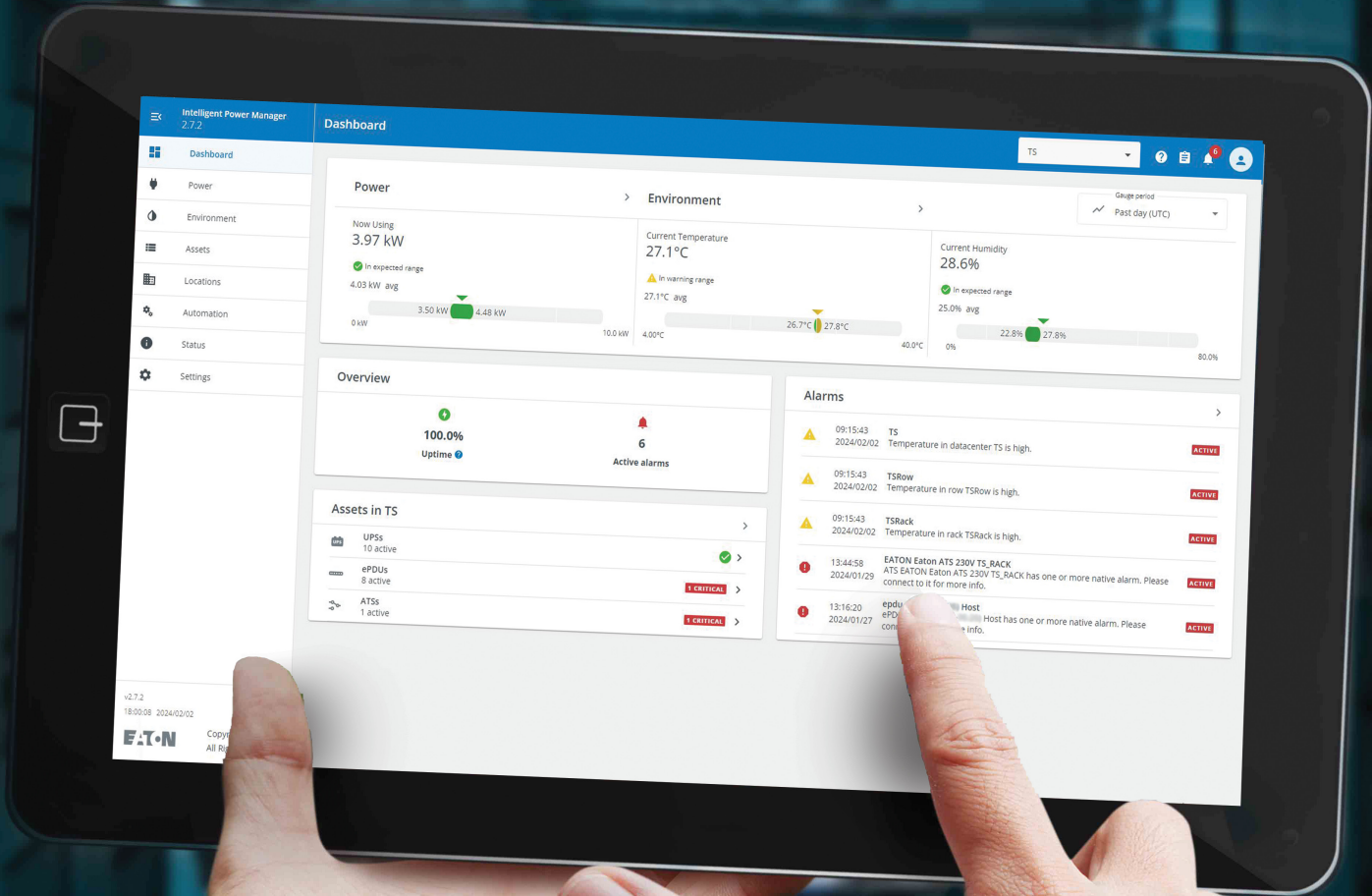


# Intelligent Power Manager – Disaster avoidance

## Benefits and Features



Powering Business Worldwide

# Intelligent Power Manager

Intelligent Power Manager (IPM) disaster avoidance software provides monitoring and management of power equipment in physical or virtual environments to keep IT devices running during a power or environmental event.

This innovative software solution ensures system uptime and data integrity by allowing you to remotely monitor, manage and control devices on your network.

| Features  |   | Benefits & Details   |
|---|---|--|
| <b>Contextual visibility of power metrics &amp; constraints</b> |   | <b>Enable IT administrators to easily understand key power and environmental constraints within the context of their IT environment.</b>   |
| Dashboard view  | ✓ | Visibility of data center level composite metrics and alarms including : <ul style="list-style-type: none"> <li>• Power usage, 24 hour, 7 day and 30 day usage trends</li> <li>• Active alarms panel</li> <li>• Data center uptime metric</li> </ul>   |
| Data center centric monitoring view                             | ✓ | Power chain overview including : <ul style="list-style-type: none"> <li>• Rack level power usage composite metrics</li> <li>• Data center topology with rack, row, &amp; room level grouping</li> <li>• Calculated data center phase balance for 3 phase deployments</li> <li>• Active alarms panel</li> <li>• Total data center power consumption graph with preset and custom periods</li> </ul> |
| Device centric monitoring view                                  | ✓ | Individual power device centric monitoring   |
| Rack view   | ✓ | Rack view - where IT and Power meet : <ul style="list-style-type: none"> <li>• Total rack consumption composite metric</li> <li>• Feed balance visualisation</li> <li>• Outlet and outlet group level monitoring (with MO &amp; MA rack PDUs)</li> <li>• Active alarms panel</li> <li>• Total rack power consumption graph with preset and custom periods</li> </ul>                               |
| Environmental view  | ✓ | Environmental view including: <ul style="list-style-type: none"> <li>• rack average input temperature &amp; humidity composite metrics</li> <li>• row average input temperature &amp; humidity composite metrics</li> <li>• data center average input temperature &amp; humidity composite metrics</li> </ul>  |
| Facility & IT asset management                                  | ✓ | Simple asset management including: <ul style="list-style-type: none"> <li>• Asset create/modify/delete</li> <li>• Data center topology &amp; power chain management Deployment date</li> <li>• Battery installation, maintenance &amp; warranty expiration tracking"</li> </ul>  |
| Virtual IT asset monitoring                                     | ✓ | Monitor the current state of your virtual infrastructure and use in automation plans with out of the box connectors  |
| <b>Monitoring of Eaton &amp; many 3rd party power devices</b>   |   | <b>Single pane of glass solution for power infrastructure &amp; environmental monitoring as well as for business continuity plan implementation in heterogeneous data center environments</b>  |
| Eaton UPSs, rack PDUs & ATSS                                    | ✓ | Provide contextual visibility of power and environmental constraints & define business continuity automation triggers with the Manage or Optimize Editions   |
| 3rd party UPSs, rack PDUs & ATSS                                | ✓ | Monitor select 3rd party devices and define business continuity automation triggers from select 3rd party devices with the Manage or Optimize Editions   |
| <b>Manage &amp; update Eaton power devices</b>                  |   | <b>Simplify configuration management across the network for large installed base deployments of Eaton power devices</b>  |
| Mass configure Eaton power devices (UPS, PDU, ATS)              | ✓ | Deploy common configuration settings across multiple Eaton power devices   |
| Mass upgrade Eaton power devices (UPS, PDU, ATS)                | ✓ | Upgrade UPS card firmware over the network   |

| Features   |   | Benefits & Details   |
|--|---|--|
| <b>Simple Wizard based automation configuration</b>                                  |   | <b>Get running fast. Create IT automations and rollback sequences quickly and easily</b> |
| Graphical automation wizard  | ✓ | Create business continuity automations for groups of devices in minutes                  |
| Trigger automations on power & environmental events                                  | ✓ | Create power & environmental event business continuity automations for groups of devices |
| Trigger roll-back automations on error or on the state change of the initial trigger | ✓ | Ensure the graceful sequential shutdown and restart of infrastructure                    |

| <b>Basic business continuity automations with host level actions</b> |   | <b>Automate protection of your IT environment with host level actions</b>   |
|--|---|---|
| Protected Servers and Virtual Hosts (agentless)                      | ✓ | Gracefully shutdown servers   |
| Control PDU outlets  | ✓ | Enable automation based control of ePDU outlets (individually or by device) |
| Custom script execution  | ✓ | Upload custom scripts in BASH, Python or PERL for use in automations        |
| Create advanced composite events with boolean logic                  | ✓ | Use custom user defined events in configuration policies                    |
| Execute SSH action   | ✓ | Easily configure custom actions on any SSH enabled device                   |
| Shutdown storage controllers   | ✓ | Remotely shutdown select storage devices                                    |

| <b>Define advanced business continuity automations with VM &amp; cluster level actions</b> |   | <b>Automate protection of fully virtualized HA clusters &amp; HCI environments with advanced actions</b> |
|--|---|--|
| Target VM level actions on individual VMs, groups of VMs or automatic groups of VMs        | ✓ | Target individual VMs, groups of VMs or automatic groups of VMs with VM level actions                    |
| Target cluster level actions including on hyper converged & vSAN environments              | ✓ | Perform graceful cluster level shutdowns including with vSAN and Stretched vSAN environments             |
| Sequential VM load shedding  | ✓ | Sequentially shutdown IT loads by business criticality   |
| Shutdown VMware vApp   | ✓ | Gracefully shutdown multiple VMs using VMware vApp objects   |
| Nutanix Acropolis shutdown   | ✓ | Gracefully shutdown Nutanix Acropolis clusters   |

| <b>3rd party IT solution connectors</b> |   | <b>Simple, point and click integration to leading IT platforms</b>                                       |
|---|---|--|
| VMware vCenter                          | ✓ | Create business continuity automations to protect your vCenter clusters                                  |
| VMware ESXi                             | ✓ | Create business continuity automations to protect individual ESXi servers                                |
| VMware vSAN & vSAN Stretched            | ✓ | Create business continuity automations in both vSAN and vSAN Stretched Cluster environments              |
| VMware SRM                              | ✓ | Create business continuity automations that trigger pre-defined Site Recovery Manager plans              |
| VxRail                                  | ✓ | Gracefully shutdown your VxRail HCI cluster with IPM fully virtualized. Requires a Gigabit Network card. |
| Microsoft Hyper-V                       | ✓ | Create business continuity automations to protect Hyper-V servers or clusters                            |
| Microsoft SCVMM                         | ✓ | Create business continuity automations to protect Hyper-V environments via SCVMM                         |
| Nutanix Acropolis                       | ✓ | Create business continuity automations to protect Nutanix Acropolis clusters                             |

| <b>Technical &amp; integration</b>     |   | <b>A modern application that just works in your environment</b>                 |
|--|---|---|
| HTML 5 user interface                  | ✓ | Modern HTML 5 & Angular 11 web application                                      |
| LDAP & MS Active Directory integration | ✓ | Integrate with your corporate LDAP or Microsoft Active Directory infrastructure |
| Office 365 email integration           | ✓ | Integrates with Office 365 email service  |
| Gmail integration                      | ✓ | Integrates with Gmail email service   |

## How to license Intelligent Power Manager?

- IPM is licensed according to the number of nodes and is available in different node packages.
- Nodes include IT devices such as hypervisors (VMware ESXi, HyperV Server, VxRail & Nutanix) and physical Windows servers, as well as power devices such as UPS, PDU and ATS systems.
- You can choose between a 1-year or 3-year subscription or a perpetual license (including 5-year maintenance).

For further details on licensing, please contact your sales representative.

## Want to have a try with Intelligent Power Manager?

- Eaton IPM disaster avoidance software application enables you to remotely monitor and manage equipment and mitigate power events before they cause damaging outages.
- Our premium offering, IPM now features a completely new user experience, with a redesigned user interface, more options to automate critical processes and enhanced visualization and contextualization options to better understand the status of IT equipment from anywhere at any time.

Take these advanced virtualization capabilities for a spin with a free 60-day trial. [Register here](#)



## The License structure 2024 in detail

| For initial sales |                |                |                      |
|-------------------|----------------|----------------|----------------------|
| Number of nodes   | New SKU SUB 1Y | New SKU SUB 3Y | New SKU Perpetual 5Y |
| 3                 | IPM-3N-SUB1    | IPM-3N-SUB3    | IPM-3N-P5            |
| 5                 | IPM-5N-SUB1    | IPM-5N-SUB3    | IPM-5N-P5            |
| 10                | IPM-10N-SUB1   | IPM-10N-SUB3   | IPM-10N-P5           |
| 20                | IPM-20N-SUB1   | IPM-20N-SUB3   | IPM-20N-P5           |
| 50                | IPM-50N-SUB1   | IPM-50N-SUB3   | IPM-50N-P5           |

| For upgrade sales |                    |                    |                      |
|-------------------|--------------------|--------------------|----------------------|
| Number of nodes   | New SKU SUB 1Y     | New SKU SUB 3Y     | New SKU Perpetual 5Y |
| 5                 | IPM-UP3T05N-SUB1   | IPM-UP3T05N-SUB3   | IPM-UP3T05N-P5       |
| 10                | IPM-UP5T010N-SUB1  | IPM-UP5T010N-SUB3  | IPM-UP5T010N-P5      |
| 20                | IPM-UP10T020N-SUB1 | IPM-UP10T020N-SUB3 | IPM-UP10T020N-P5     |
| 50                | IPM-UP20T050N-SUB1 | IPM-UP20T050N-SUB3 | IPM-UP20T050N-P5     |



**Eaton**  
 EMEA Headquarters  
 Route de la Longeraie 7  
 1110 Morges, Switzerland  
 Eaton.eu

© 2024 Eaton  
 All Rights Reserved  
 Publication No. CC152007EN  
 February 2024

For more information, visit <http://eaton.eu/ipm>

Eaton is a registered trademark.

All other trademarks are property of their respective owners.

Follow us on social media to get the latest product and support information.

