

**DELL**Technologies

LATITUDE

**9330**

Confidently work anywhere.



LATITUDE

# 9330

Confidently work anywhere.

A new 13.3" ultra-premium 2-in-1. The smallest Latitude designed for the best collaboration & connectivity<sup>17</sup> with intelligent performance, built-in security and privacy.

For C-Suite, Account Managers, Consultants, etc. driven to build and grow the business with strategic vision. They need the best mobile performance, collaboration tools and connectivity to work anywhere.



### ExpressSign-in

Wake your system when you approach and lock it when you step away.

### Enhanced Camera with SafeShutter privacy

Look great on every video call with built-in FHD webcam and SafeShutter that automatically opens & closes with video calls.

### Intelligent neural noise cancellation

Collaborate confidently with AI-based background noise elimination.

### Small 13.3" 16:10 2-in-1 with outstanding screen-to-body ratio

5% more screen space with 16:10 aspect ratio designed with the narrowest borders achieving 90% screen to body ratio.

Always-on **ComfortView Plus** reduces harmful blue light with color accuracy in QHD+ touch options.

### New Intelligent Privacy features

#### Onlooker Detection

alerts you of onlookers and protects data on screen.

**Look-away Detect** – knows when you're not looking at screen and dims for privacy & battery savings.

Utilize two networks at once with **ExpressConnect**, world's 1st simultaneous multi-network connection for faster data and video downloads<sup>20</sup>.

### Camera Mute F9 Key

Take control of the camera privacy with hardware level camera mute security.

### LPDDR5 Memory

Better performance for heavy workloads.

### Speakerphone

Hear every detail in your meetings with top and bottom firing speakers and intelligent tuning.

### WiFi6E & 4G/5G options

Connect from anywhere with industry's fastest speeds.

### Collaboration Touchpad

Quickly access mic, camera, share screen, & chat controls during you online meetings.

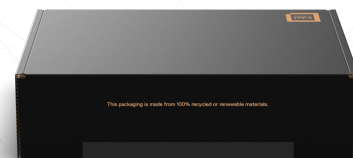
### Our fastest charging

Up to 80% within 40 min with ExpressCharge 2.0<sup>22</sup>.

**Multi-task for evolving demands.** Available Intel vPro®, An Intel® Evo™ Design with 12th Gen Intel® up to Core™ i7 processors. Advanced thermals maximize performance while staying cool & quiet.

**Enterprise-level security, serviceability & durability.** Passes MIL-STD 810H tests.

**Our most sustainable portfolio with new packaging made from 100% recycled or renewable materials**, the 1st to meet our 2030 Moonshot goals<sup>23</sup>, also helps to meet your goals.



See important information on last page

LATITUDE

# 9330

## Sustainability on Dell Latitude

Leading the industry in sustainable practices in our products, packaging and supply chain.

### OUR MOST SUSTAINABLE LATITUDE PORTFOLIO: WORKING TOWARD OUR GOALS, SO YOU CAN MEET YOURS.



#### Packaging Innovation

# 100%

Recycled or renewable premium packaging on new Latitude 9000. Easy-to-open and uses less carbon to ship. It's the 1<sup>st</sup> design that already meets our 2030 moonshot goals.<sup>23</sup>

#### Design

# ↑ Sustainability

66% recycled plastic in the keyboard, 50% recycled material in the battery frame, 28% ocean-bound plastic in the fan <sup>24</sup>.

#### Recycling e-waste



Securely, responsibly retire your IT equipment with Dell regardless of brand, in support of a circular economy. Learn more at [Dell.com/Recycle](https://Dell.com/Recycle).

### LATITUDE HAS

# 90+

EPEAT registered products<sup>25</sup>



# 100%

EPEAT Gold in 2022 products



# 35+

TCO 8 certified configurations



# 8.0

ENERGY STAR<sup>®</sup> throughout the portfolio



See important information on last page



# 9330

## Dell Optimizer

We make it intelligent. You make it yours.

Dell Optimizer revolutionizes the way you work by fueling the world's most intelligent PCs<sup>26</sup>. It is the only business, AI-based optimization software that learns and responds to the way you work and is designed to automatically improve application performance, battery run-time, audio settings, and privacy—all in the background while you're working.

Accomplish anything with built-in intelligence that learns and adapts.



### Intelligent privacy anywhere

Onlooker detection lets you texturize your screen when an intruder is detected, and Look Away Detect darkens the PC screen based on user behavior.



### Extended power

ExpressCharge analyzes your power usage habits to improve PC battery utilization, extend run time, and charge your system faster.



### Unmatched connectivity

ExpressConnect<sup>30</sup> provides the world's first simultaneous multi-network connection<sup>31</sup> that joins the best network<sup>32</sup> available.



### Faster sign-in

ExpressSign-in's<sup>27</sup> proximity sensor detects your presence to wake on approach before Windows Hello logs you in via facial recognition.



### Enhanced audio

Intelligent Audio delivers audio and mic enhancements and reduces background noise using Neural noise cancellation.



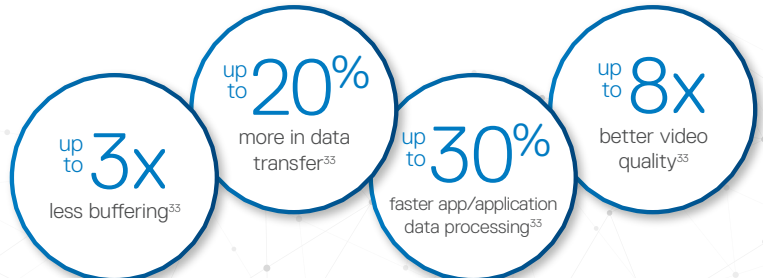
### Improved performance

ExpressResponse<sup>28</sup> analyzes how you use your preferred apps<sup>29</sup> to boost performance.



### Simplified manageability

Elevate work experience with an easy-to-manage application that provides a seamless experience for both end-users and IT decision-makers.







## RECOMMENDED SOLUTIONS



**UltraSharp 40 Curved WUHD Monitor - U4021QW**

Redefine productivity on this 40" curved ultrawide WUHD 5K2K monitor that delivers exceptional color and clarity.



**Ultrasharp Webcam - WB7022**

Elevate your video conferencing experience on this powerful, intelligent 4K webcam<sup>42</sup> that optimizes your visuals with a large 4K Sony STARVIS™ CMOS sensor and AI Auto-Framing.



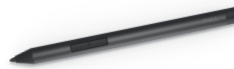
**Dell Dual Charge Dock - HD22Q**

Laptop docking station with a wireless charging stand for Qi-enabled smartphones or earbuds.



**Jabra Elite 85t True Wireless Ear Buds**

These earbuds feature fully adjustable Jabra Advanced Active Noise Cancellation™ in a compact, true wireless design.



**Dell Active Pen - PN5122W**

Write naturally and precisely with this multi-protocol, high sensitivity active pen for our 2-in-1s.



**14" Portable Monitor - C1422H**

Experience dual-screen productivity anywhere with Dell's first-ever 14" portable monitor.



**Premier Multi-Device Wireless Keyboard & Mouse - KM7321W**

Multi-task seamlessly across 3 devices with this premium full-size keyboard and sculpted mouse combo featuring programmable shortcuts and 36 months battery life.<sup>45</sup>



**Premier Wireless ANC Headset - WL7022**

Collaborate with ease anywhere with this Teams certified wireless headset which offers active noise cancellation and smart sensors that automatically mute and unmute your call.

# LATITUDE 9330

FEATURE	TECHNICAL SPECIFICATION
<b>MODEL NUMBER</b>	9330 (2-in-1)
<b>PROCESSOR OPTIONS<sup>1</sup></b>	12 <sup>th</sup> Gen Intel® Core™ Processors up to i7, vPro
<b>OPERATING SYSTEM<sup>1</sup></b>	Windows 11 Home, 64-bit Windows 11 Pro, 64-bit Windows 11 Downgrade (Windows 10 image)
<b>MEMORY OPTIONS<sup>1,2,3</sup></b>	Up to 32GB LPDDR5 SDRAM 5200MHz (on board)
<b>CHIPSET<sup>1</sup></b>	Integrated with the Processor
<b>INTEL RESPONSIVENESS TECHNOLOGIES<sup>1,7</sup></b>	Intel® Rapid Storage Technology
<b>GRAPHICS<sup>1,8</sup></b>	Intel® Iris® X® Graphics (Integrated)
<b>DISPLAY<sup>1</sup></b>	<b>2-in-1</b> 13.3" 16:10 QHD+ (2560 x 1600) WVA Touch, Anti-reflective and Anti-Smudge, Corning® Gorilla Glass® 6 DX, Super Low Power, 500 nits, sRGB 100%, Comfort View Plus Low Blue Light, Intelligent Privacy, SafeShutter, Active Pen Support
<b>STORAGE<sup>1,3</sup></b>	SSD M.2 2230 Gen xx PCIe/NVMe Class 35 up to 1TB M.2 2230, 256 GB, PCIe NVMe Gen4 x4, SSD, Class 35, self-encrypting drive
<b>SECURITY<sup>1</sup></b>	TPM 2.0 FIPS-140-2 Certified / TCG Certified Optional Windows Hello compliant fingerprint reader in power button  Optional Security Hardware Authentication Bundles 1: Touch Fingerprint Reader (in Power Button) with Control Vault 3.0 Advanced Authentication with FIPS 140-2 Level 2 Certification Face IR camera (Windows Hello compliant) with ExpressSign-in 1.0 (Proximity Sensor) Face IR camera (Windows Hello compliant) with ExpressSign-in 2.0 (Camera Sensing) Intelligent Privacy SafeShutter™ (electro-mechanical camera shutter)  Dell Client Command Suite: On-Prem Dell Client Command Suite: Cloud Dell Optimizer Dell Power Manager Support Assist for PCs Support Assist OS Recovery (Excalibur) Dell SafeBIOS - Off Host Verification Dell SafeBIOS - Indicators of Attack Dell SafeID Vmware Carbon Black Endpoint Standard Vmware Carbon Black Endpoint Advanced Vmware Carbon Black Endpoint Enterprise Absolute Visibility Absolute Control Absolute Resilience Dell Encryption Personal Dell Encryption Enterprise Netskope Cloud Access Security Broker (CASB) Netskope Secure Web Gateway Netskope Private Access
<b>DOCKING<sup>1</sup></b>	(Docks are optional, sold separately) Dell Thunderbolt™ Dock- WD19TBS Dell Thunderbolt™ Dock - WD22TB4 Dell USB-C Dock - WD19S Dell Universal Dock D6000S Dell Dual Charge Dock - HD22Q (May 2022)
<b>MULTIMEDIA<sup>1</sup></b>	FHD IR Camera (User-Facing fixed focus) Experience: ExpressSign™, Intelligent Privacy, low light capability + Temporal Noise Reduction + Intel IPU6 + Proximity Sensor + Intel Camera Sensing Technology + SafeShutter™ (electro-mechanical camera shutter) 2 x Top Firing Premium Speakers, 2 x bottom firing Premium Speaker, Waves MaxxAudio Pro, Smart Amplifier 4 x Noise Canceling Microphones Intelligent Audio with Neural Noise Cancellation Universal Audio jack
<b>BATTERY OPTIONS<sup>1</sup></b>	3-Cell, 50 Whr6 Polymer, ExpressCharge 2.0™, ExpressCharge Boost™ & Long Life Cycle capable
<b>POWER OPTIONS<sup>1</sup></b>	65W adapter, Type-C 60W adapter, Type-C, Small Form Factor 90W adapter, Type-C

FEATURE	TECHNICAL SPECIFICATION
<b>CONNECTIVITY OPTIONS<sup>1,4</sup></b>	Microsoft Modern Standby compliant WiFi Display (Miracast) <sup>14</sup> <b>Wireless LAN Options<sup>2</sup>:</b> Intel® Wi-Fi 6E (6GHz) AX210 2x2 + Bluetooth 5.2 <b>Mobile Broadband Options<sup>8, 10</sup>:</b> Qualcomm® Snapdragon™ X20 LTE-A (DW5821e) (eSIM enabled), WW excluding China, Turkey, US Qualcomm® Snapdragon™ X20 LTE-A (DW5821e) WW Qualcomm® Snapdragon™ X20 LTE-A (DW5821e) for AT&T, Verizon & T-Mobile, US Intel® 5000 Global 5G WWAN (DW5931e; e-SIM) Intel® 5000 Global 5G WWAN (DW5931e; non-eSIM) China, Turkey Intel® 5000 Global 5G WWAN (DW5931e; e-SIM) AT&T, Verizon & T-Mobile, US only
<b>PORTS, SLOTS &amp; CHASSIS<sup>1</sup></b>	2 x Thunderbolt™4 with Power Delivery & DisplayPort (USB Type-C) 1 x USB Type-C 3.2 Gen2 1x external uSIM card tray option (WWAN only) 1 x Optional Touch Fingerprint Reader in Power Button Wedge Lock slot Audio jack
<b>DIMENSIONS &amp; WEIGHT<sup>1,5</sup></b>	Width: 296.35mm / 11.6" Height: 8.3mm / .32" (front) / 14.1mm / .55" (rear) Depth: 208.42, 18mm / 8.2" Screen to Body: 89% Starting weight: 2.8lbs / 1.27kg (2-in-1)
<b>REGULATORY AND ENVIRONMENTAL COMPLIANCE<sup>1</sup></b>	Regulatory Model: P142G Regulatory Type: P142G002 ENERGY STAR EPEAT Registered. For specific country participation and rating, please see <a href="http://www.epeat.net">www.epeat.net</a> Halogen-Free/Arsenic-Free BFR/PVC free (not including PSU) <sup>9</sup>
<b>INPUT<sup>1</sup></b>	10-Finger Touch Display Glass Microsoft® Precision Clickpad Collaboration Touchpad Single Pointing Spill Resistant Backlit Keyboard Dell Premium Active Pen PN579X (optional, sold PN7522W separately)
<b>SENSORS</b>	Gyroscope, eCompass/Magnetometer, Accelerometer, GPS (via WWAN Card only), Ambient Light Sensor, Adaptive Thermal Performance (via Gyroscope/Accelerometer), Dell ExpressSign-In 1.0 (via Proximity Sensor), Dell ExpressSign-in 2.0 (via Intel Camera Sensing Technology), Wake/Power on with lid open
<b>SYSTEMS MANAGEMENT<sup>1</sup></b>	Intel® vPro™ Technology (iAMT 12) (optional, requires Intel WiFi® Link WLAN and a vPro compatible processor), Dell Client Command Suite available ( <a href="http://dell.com/command">dell.com/command</a> ), Factory Installed Dell Client Command   Update, Dell Command   Power Manager   Dell Optimizer
<b>WARRANTY AND SERVICE<sup>1</sup></b>	Limited Hardware Warranty <sup>6</sup> , Standard 3 year Mail-in Service after Remote Diagnosis <sup>11</sup> , optional 3, 4 and 5 year hardware warranty extensions, and 3-5 year Dell ProSupport contracts available <sup>12</sup>
<b>PERIPHERAL ECOSYSTEM<sup>1</sup></b>	Powerful accessories designed and tested for Latitude 9330 enable seamless productivity for On-the-Go Professionals, wherever work takes them.
<b>SUSTAINABILITY</b>	Biobased material rubber feet Packaging made from 100% recycled or renewable materials Recycled ocean bound plastic fan housing Recycled post consumer plastic battery frame Keypcaps made from recycled materials

See important information on last page

## Product Disclosures:

- 1 Offering may vary by country and by configuration and Operating System
- 2 A 64-bit operating system is required to support 4GB or more of system memory.
- 3 GB means 1 billion bytes and TB equals 1 trillion bytes; actual capacity varies with preloaded material and operating environment and will be less.
- 4 Limited Hardware Warranty: For copy of Limited Hardware Warranty, write Dell USA LP, Attn: Warranties, One Dell Way, Round Rock, TX 78682 or see [www.dell.com/warranty](http://www.dell.com/warranty)
- 5 Tap to Pay will not be supported. Tap to Login is only supported with USH SKU
- 6 The stated Watt Hour (Whr) is not an indication of battery life
- 7 Intel Rapid Storage Technology requires a HDD, mSATA, or an SSD, as primary storage device. See OS requirements
- 8 Wireless antenna and module available only at time of system purchase
- 9 Dell Latitude 9420 are brominated flame retardant free (BFR-free) and polyvinyl chloride free (PVC-free); meeting the definition of BFR-/PVC-free as set forth in the iNEMI Position Statement on the "Definition of Low-Halogen Electronics (BFR-/CFR-/PVC-free)": Plastic parts contain less than 1,000 ppm (0.1%) of bromine (if the Br source is from BFRs) and less than 1,000 ppm (0.1%) of chlorine (if the Cl source is from CFRs or PVC or PVC copolymers). All printed circuit board (PCB) and substrate laminates contain bromine/chlorine total less than 1,500 ppm (0.15%) with a maximum chlorine of 900 ppm (0.09%) and maximum bromine being 900 ppm (0.09%).
- 10 Mobile Broadband Subject to service provider's broadband subscription and coverage area; additional charges apply.
- 11 Onsite Service after Remote Diagnosis: Remote Diagnosis is determination by online/phone technician of cause of issue; may involve customer access to inside of system and multiple or extended sessions. If issue is covered by Limited Hardware Warranty ([www.dell.com/warranty](http://www.dell.com/warranty)) and not resolved remotely, technician and/or part will be dispatched, usually within 1 business day following completion of Remote Diagnosis. Availability varies. Other conditions apply.
- 12 Dell Services: Availability and terms of Dell Services vary by region. For more information, visit [www.dell.com/servicesdescriptions](http://www.dell.com/servicesdescriptions).
- 13 GB means 1 billion bytes and TB equals 1 trillion bytes; significant system memory may be used to support graphics, depending on system memory size and other factors.
- 14 Miracast Wireless Technology: Requires a compatible media adapter (sold separately and can be integrated into the display) and an HDMI-enabled display.
- 15 Weights vary depending on configuration and manufacturing variability.
- 16 Available in US only
- 17 Based on Dell internal analysis, October 2021.
- 20 Simultaneous multi-network connection (or Connection based teaming) is a new connectivity feature under ExpressConnect. It simultaneously sends and receives data and video traffic using two or more wired or wireless connections. Based on Dell internal analysis, September 2021.
- 21 Based on Dell internal analysis of competitive PC performance software and applications September 2021.
- 22 ExpressCharge can recharge system battery from 0% up to 80% within 40 minutes. After charging has reached 80% capacity, charging speed will return to normal speed. Recommended for use with the provided Dell power adapter; not recommended with a smaller capacity power adapter. Charging time may vary +/-10% due to system tolerance. ExpressCharge Boost can recharge system battery from 0% up to 35% within 20 minutes when system is powered-on and battery temperature is between 16-45 degrees C. With ExpressCharge mode enabled, the system battery can then continue charging up to 80% within 40 minutes. After charging has reached 80% capacity, charging speed will return to normal speed. Recommended for use with the provided Dell power adapter; not recommended with a smaller capacity power adapter. Charging time may vary +/-10% due to system tolerance.
- 23 Approximately 78% recycled content and 22% renewable content in the form of FSC paper fibers. Excludes optional items added to order and included in box.
- 24 Up to 50% in the battery frame, up to 35% in the palm rest, 28% recycled ocean-bound plastic in the fan and up to 20% recycled carbon fiber in the lid.
- 25 EPEAT registered where applicable. EPEAT registration varies by country. See [www.epeat.net](http://www.epeat.net) for registration status by country.
- 26 Based on internal analysis, April 2021. Dell Optimizer available in 2020 devices, not available in OptiPlex 3000 series, Latitude 3310 2-in-1 and Latitude Chromebook Enterprise. Feature availability and functionality varies by model.
- 27 Available on Latitude 9000 and select 7000 series; Precision mobile workstations 7000 and select 5000 series. See product details for availability.
- 28 ExpressResponse must be enabled in the Applications feature. DO learns how user uses the selected application(s) over several hours. Based on Dell testing using Sysmark 2018 benchmark on a Latitude system running productivity applications; and using performance evaluation benchmarks on Precision mobile workstations running ISV applications, March 2020. Improvement will vary based on product configuration, use, application and other factors
- 29 User must input preferred apps first in order for them to be analyzed.
- 30 ExpressConnect available with Dell Optimizer software version 2.0 and onwards. Download the latest at <https://www.dell.com/support/home>.
- 31 Disclaimer: Simultaneous multi-network connection (or Connection based teaming) is a new connectivity feature under ExpressConnect. It simultaneously sends and receives data and video traffic using two or more wired or wireless connections. Based on Dell internal analysis.
- 32 Best network selection based on signal strength, channel congestion, router type and others. Network suggestions based on user credentials.
- 33 With ExpressConnect's optimized internet bandwidth. Based on testing performed by Dell Labs in June 2020, comparing performance with ExpressConnect enabled and disabled. Actual results may vary; testing results do not guarantee performance under test conditions. Subject to service provider's broadband subscription and coverage area; speeds may vary. Additional charges will apply. Contact your service provider for details.
- 34 Based on an independent user study of 20 experienced webcam users commissioned by Dell. Participants evaluated the brightness, color saturation and sharpness of live web meeting video streamed with the Dell UltraSharp webcam and leading competitive external 4K personal conferencing webcams in uniform, low and high contrast lighting conditions (No physical webcams nor brands were shown to participants) (June 2021). Claims cannot be used in the following countries: Do not use in Chile, China, Colombia, Costa Rica, Guatemala, Hong Kong, Korea, Malaysia, Russia, South Africa, Taiwan, Ukraine, Venezuela and Vietnam
- 35 Based on Dell analysis, September 2020. Percentage of recycled content by weight.
- 36 Based on Dell internal analysis of battery life usage model calculations, Nov 2020. Results vary depending on usage and computing conditions.
- 37 Based on Dell Internal analysis, January 2019.
- 38 Based on Principled Technologies Report commissioned by Dell Technologies, "Deliver pre-configured systems to end users faster with Dell Provisioning for VMware Workspace ONE", January 2019, comparing deployment using Dell Provisioning for Workspace ONE vs. traditional deployment. Results extrapolated to deployment of 1000 systems, a week represents seven full workdays. Actual results will vary.
- 39 Based on a Forrester Total Economic Impact™ Study commissioned by VMware, "The Total Economic Impact™ of VMware Workspace ONE for Windows 10", September 2018. Results from interviews with VMware Workspace ONE customers and/or based on a 12,000-employee composite organization.
- 40 Based on a Principled Technologies test report, "Spend Less Time and Effort Troubleshooting Laptop Hardware Failures" dated April 2018. Testing commissioned by Dell, conducted in the United States. Actual results will vary. Full report: <http://facts.pt/L52XKM>
- 41 Based on Dell internal analysis, November 2021.