

CONNECTED...
ACCELERATED...CAPABLE



ThinkCentre M715q Thin Client



Lenovo™

ThinkCentre M715q Thin Client



DESIGNED TO MEET YOUR GROWING BUSINESS REQUIREMENTS

The ThinkCentre M715q Thin Client is perfect for power users, combining power with energy efficiency. Built with performance in mind, the M715q is powered by a choice of processors between the AMD PRO A6, A10, Athlon 200G and Ryzen 3 processors, making it the ideal choice for virtualization and Cloud-ready.

Performance: better user experience with up to 50% increase in boot time

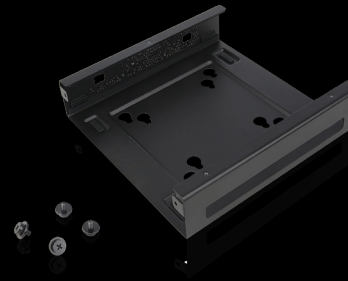
Responsiveness: the Thin Client includes the Lenovo Thin Client Manager – an intuitive and intelligent software that allows admins to manage and upgrade devices quickly and easily – all from one place

Productivity: with features that match a full-fledged PC, users can access files, apps, and services through the cloud, giving businesses more freedom and flexibility

Near Silent: the ThinkCentre M715q Thin Client features an active cooling design that produces virtually no noise – perfect for a quiet office or dusty environments

ACCESSORIES

ThinkVision Tiny-in-One Monitor ▶
Pair your Tiny Thin Client with Lenovo's unique ThinkVision TiO monitors to deliver a single, modular, all-in-one Thin Client using a single power outlet with dual display capability.



◀ **ThinkCentre Tiny Vesa Mount II**
House your Tiny PC in this VESA Mount II for utmost mounting flexibility.

Lenovo Stereo Headset ▶
Headsets with an adjustable headband and boom arm 180° mic.



Lenovo™

ThinkCentre M715q Thin Client

PERFORMANCE

Processor

AMD Pro Athlon 200G Processor

3.0GHz dual core (2xCPU core, 3xGPU core)

AMD Ryzen 3 2200GE Processor

2.6GHz quad core (4xCPU core, 8xGPU core)

AMD PRO A6-8570E Processor

3.0GHz dual core (2xCPU core, 4xGPU core)

AMD PRO A10-8660E Processor

2.8GHz quad core (4xCPU core, 6xGPU core)

Memory

Available with 4 GB or 8 GB DDR4 RAM

2 x SO-DIMM Slots, 2400 MHz (32GB Max)

Storage

Choice of 32GB or 128GB SSD

Power Supply

65W 88% Adapter

GRAPHICS

GPU

AMD Radeon™ R5 Graphics (for A6 CPU)

AMD Radeon™ R7 Graphics (for A10 CPU)

AMD Radeon™ VEGA 3 Graphics (for Athlon CPU)

AMD Radeon™ VEGA 8 Graphics (for Ryzen 3 CPU)

Resolutions

Maximum 4096x2160 (DP) @60Hz

Maximum 4096x2160 (HDMI**) @60Hz

Maximum 1920x1200 (VGA**) @60Hz

*** When using cutout option or converter*

CONNECTIVITY

Front Ports

2 x USB 3.0 (1 for Fast Charge)

2 x Audio (1 Combo)

Rear Ports

4 x USB (1 x USB 3.0)

2 x DisplayPort™

1 x LAN

1 x Audio

1 x Punch-out (Optional VGA / DisplayPort™ / Serial)

WiFi

1 x 1 802.11 ac WLAN + Bluetooth® 4.0 (optional)

2 x 2 802.11 ac WLAN + Bluetooth® 4.0 (optional)

DESIGN

Form Factor

1L Tiny4

Security

HW TPM2.0

KB Power on

Yes

MIL-SPEC

Yes

'Near-Silent' Cooling

Yes

GREEN CERTIFICATIONS

Energy Star 6.1

EPEAT® Gold

UL Green Guard®

OS SUPPORT

Windows 10 IoT Enterprise

Windows Embedded Standard 7 (AMD PRO A6 & A10 ONLY)

LeTOS Embedded Linux

UL Green Guard®

INTEGRATED SOFTWARE SUPPORT

WES7 & Win10-IoT (WES7 not available on Ryzen 3)

Citrix XenApp and XenDesktop

VMware Horizon View

Microsoft RDS

Internet Explorer

Windows Connection Manager

Windows Hotkey Passthrough Tool

LeTOS

Citrix XenApp and XenDesktop

VMware Horizon View

Microsoft RDS via RDesktop

Microsoft RDS via FreeRDP

Parallels 2X

REXEC

SSH

VNC

X11

Firefox

Chrome

Fabulatech USB Redirection

Fabulatech for Scanners

SECURITY SUPPORT

Imprivata SSO

MANAGEMENT SOFTWARE

Lenovo Terminal Manager

license included free of cost

SOFTWARE CERTIFICATIONS

Citrix

Citrix HDX Ready

HDX Premium

HDX 3D Pro

VMware

VMware Horizon Certified



© 2018 Lenovo. All rights reserved. These products are available while supplies last. Prices shown are subject to change without notice. For any questions concerning price, please contact your Lenovo Account Executive. Lenovo is not responsible for photographic or typographic errors. Warranty: For a copy of applicable warranties, write to: Warranty Information, 500 Park Offices Drive, RTP, NC 27709, Attn: Dept. ZPYA/B600. Lenovo makes no representation or warranty regarding third-party products or services. Trademarks: Lenovo, the Lenovo logo, Rescue and Recovery, ThinkPad, ThinkCentre, ThinkStation, ThinkVantage, and ThinkVision are trademarks or registered trademarks of Lenovo. Microsoft, Windows, and Vista are registered trademarks of Microsoft Corporation. AMD, the AMD Arrow logo, and combinations thereof are trademarks of Advanced Micro Devices, Inc. in the United States and/or other jurisdictions. Other company, product, and service names may be trademarks or service marks of others.

Lenovo