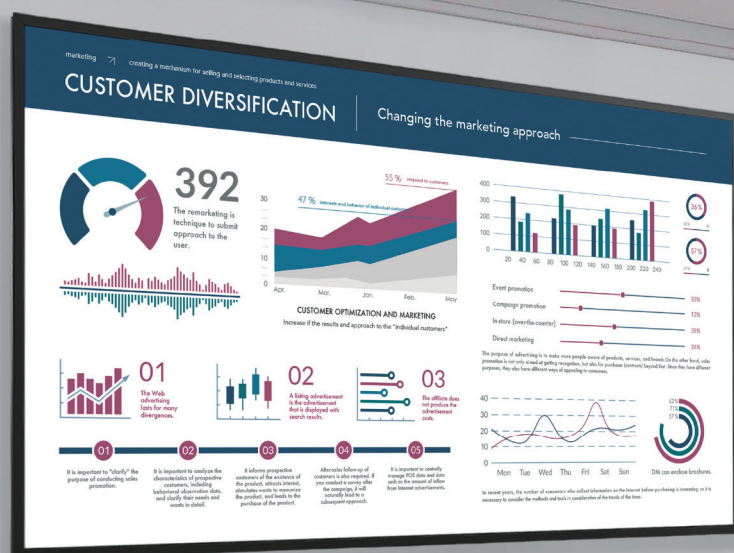


SONY

androidtv

# BRAVIA Professional Displays

2021 Model Catalogue



BRAVIA



X|R  
Cognitive Processor

X|1  
4K HDR Processor



Extron

logitech

# Outstanding picture quality & detailed reproduction for business



**BRAVIA™**

Harness the power of rich media content for your organisation with BRAVIA Professional Displays.

**androidtv**



## Cognitive Processor XR™

World's first processor  
with Cognitive Intelligence

Our BRAVIA XR Display takes vision and sound to the next level with the ingenious Cognitive Processor XR. It understands how humans see and hear, providing a whole new experience that immerses you completely in the scene.

## 4K HDR Processor X1™

One chip, incredibly real

With Object-based HDR remaster and 4K HDR technology, our new 4K HDR Processor X1 reproduces more depth, textures and natural colours than Sony's entry level 4K Processor X1. You'll see pure colours at higher brightness levels for exceptionally realistic pictures.



**X1**  
4K HDR Processor

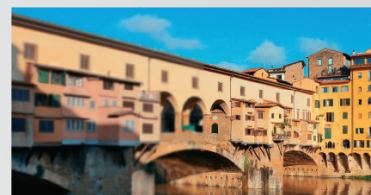


# Cognitive Processor XR™

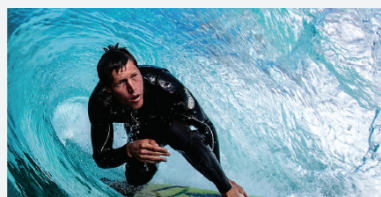
## XR Color

A wide palette of naturally beautiful colours

See colours that are natural and beautiful to the human eye. The Cognitive Processor XR enables our unique display to access a wider palette and reproduce each colour with the subtle differences seen in the real world. With extended hue and saturation, vivid shades and realistic texture can be seen.



## XR Picture



## XR Motion

Intelligent motion processing for fast-moving blur-free scenes

Watching fast-moving movies just got a whole lot better. Our Cognitive Processor XR with XR Motion Clarity™ cross analyses data to ensure action stays smooth, bright and clear with no blur.

## XR Contrast

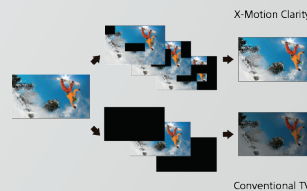
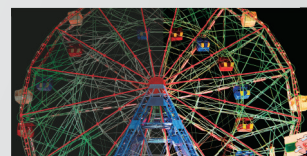
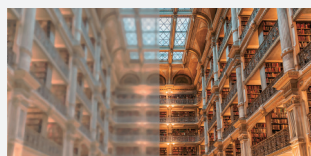
Real life depth with deep blacks and intense brightness

Feel breathtaking contrast, just as in real life. Our Cognitive Processor XR cross analyses data, enhancing pictures in the same way that the human eye focuses for real life colour and depth. With XR Contrast Booster, bright areas are brighter and dark areas darker - eliminating details overwhelmed by shadow or lost in blown-out highlights.

## 4K HDR Processor X1™

### Picture

Unique 4K X-Reality PRO picture processing technology upscales every pixel for remarkable clarity. Advanced noise reduction techniques and a special pattern database ensure every scene is full of lifelike detail.



### Colour

By widening the colour spectrum, TRILUMINOS powered by our X1 processors reproduces more colours than a conventional display. It analyses and processes data in every image to make colours even more natural and precise so pictures are closer than ever to real life.

### Clarity

On some screens, sports and fast-action scenes can seem to go by in a blur. Our latest X-Motion Clarity™ technology keeps everything smooth, bright, and clear. Each "blink" is individually controlled and its duration optimised, while brightness is boosted when needed, so you won't miss a thing.

# Expanding the possibility of your business with the new lineup of BRAVIA Professional Displays

Newly added 100" & 32" size broaden the lineup to match to any installation locations.  
The new Standard product line brings a wide options for business application environment.



Sony's largest professional display model  
with supreme picture quality features

## 100" NEW

The new 100" BZ40J delivers supreme picture quality, high contrast, and more detail  
for large-sized digital signage and meeting rooms.



**XR**  
Cognitive Processor

### Features for Professional Use



**Professional  
Mode**

New professional features let you disable input or remote control, remove labels and block buttons; customize and story display settings and features, add security then copy them easily from display to display via USB flash memory.



**Flexible Content  
Layout with HTML5**

The BZ Series offers build-in support for the HTML5 application platform, so it's possible to use HTML5 interactive signage content without requiring a set-top box or PC. The content screen can be freely laid out using the 4K video, pictures, or even with the HDMI input.





Small,  
high picture quality 32"  
4K display model

NEW **32"**

Small in size, but big in picture quality for meeting contents details even in huddle space environment with new 32" BZ30J.



**X1**  
4K HDR Processor

## Professional Design

Suitable designs for professional use such as Digital Signage.

### Logo Position for Public installation

Sony logo is printed to top-right side bezel for public installation such as digital signage and it eliminates the sideways logo in portrait orientation.

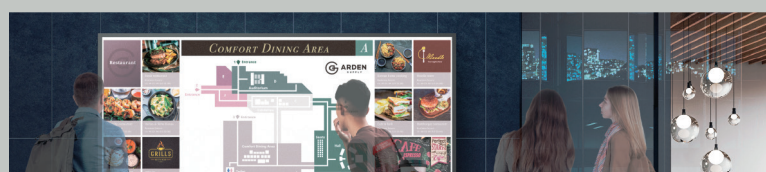


### Four-sized Uniform Bezel for Portrait Installation

\* for BZ40J only

### Carrying Handle

\*for BZ40J only



### Cable Management

Neatly bundles the power cable, HDMI and other cables with a cable clamper.



### 32" AC

### Adapter Holder

Smart installation by adapter holder even in limited space

\* for BZ30J only



## IP Network and Serial Communication Controls

The BZ Series is controllable both via IP network (wired/wireless LAN) and RS-232C. This makes it possible to incorporate the displays into a variety of existing systems, such as in offices and as eye catching signage.

## Wi-Fi 5Ghz/Apple AirPlay & Chromecast built-in™

Discover a new world of possibilities with the new BRAVIA functionality. Easily mirror content onto your BRAVIA Pro Display using Apple AirPlay or Chromecast built-in, and take advantage of Wi-Fi 5Ghz connection.







Our largest size screen model  
with Cognitive Processor XR  
& Supreme Picture Quality

Peak Brightness : 940cd/m<sup>2</sup>



## Cognitive Processor XR™

The BZ40J incorporates the Cognitive Processor XR that uses human perspective analysis to cross analyse thousands of elements at one to create an intensely immersive picture.



## BRAVIA XR



### XR Triluminos Pro

Powered by our Cognitive Processor XR, this display reproduces colour in a way that humans find beautiful. See a wider palette of colours with an enhanced range of hue and saturation, allowing natural shades and precise details to be seen, even in the dark scenes.



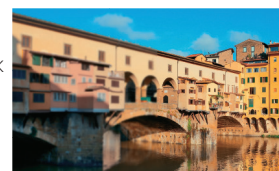
### XR Motion Clarity™

On some screens, fast-moving scenes can seem to go by in a blur. Our latest LED XR X-Motion Clarity technology keeps everything smooth, bright and clear. Each frame is individually controlled and its duration optimized, while brightness is boosted when needed, so you won't miss a thing.



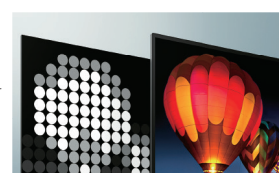
### XR 4K Upscaling

Powered by our Cognitive Processor XR, this display takes 2K signals close to true 4K quality for incredibly real and immersive viewing. XR 4K Upscaling accesses and utilises a vast amount of data analysing patterns in scenes and recreating subtle details.



### XR Contrast Booster

By precisely balancing light output across the screen, dimming some areas and boosting others, the XR Contrast Booster adjusts brightness for higher peaks in glare and deeper blacks in shadows. As bright areas are brighter and dark areas darker, scenes look more real with extra depth and detail.

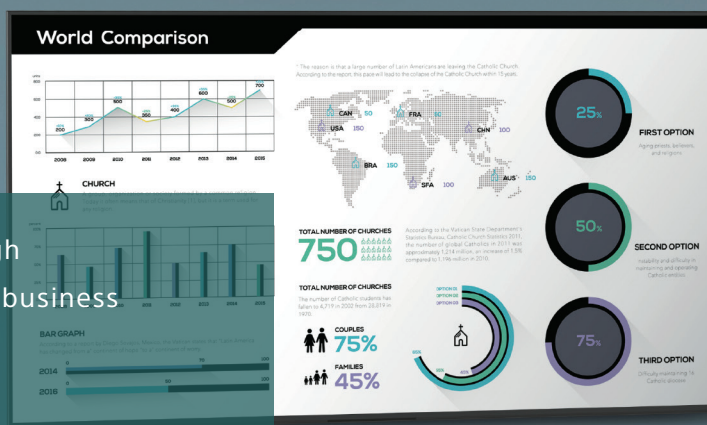


24/7 Portrait Tilt





High brightness, high contrast images for business application content



Peak Brightness : 850cd/m<sup>2</sup>

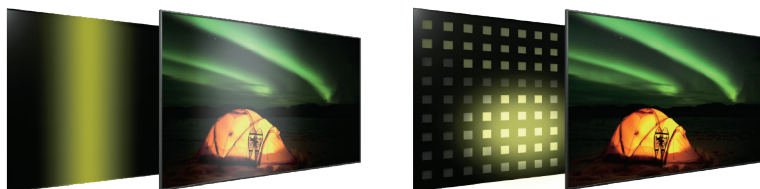
## Picture Quality Features



## Full Array LED

Brighter highlights and deeper blacks

Multiple LED zoning allows Full Array display models to adjust and create contrast depending on the scene, resulting in more light where brightness is needed, and less light where darkness is needed.



## Cosmetic Design



Logo position



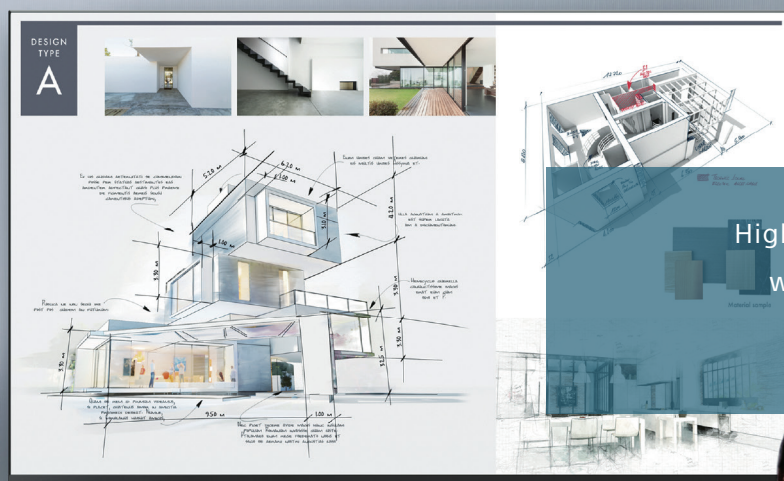
All Side Terminal Position



Flat bottom bezel

## 24/7 Portrait Tilt





High picture quality model  
with flexible installation  
for mid-sized spaces

**Peak Brightness : 570 cd/m2\***

\*43" : 560cd/m2 (at bottom)

## Picture Quality Features



## Motionflow XR

Less blur, even in fast scenes

On some screens, sports and fast action scenes go by in a blur. Our Motionflow technology keeps movement smooth and clear by creating extra images between images and black images between scenes. The result? Less blur and afterimage, more flowing motion.



## Cosmetic Design



Logo position



All Side Terminal Position



Flat bottom bezel

## 24/7 Portrait Tilt





# BZ30J

Features

2021 NEW Model

75"

65"

55"

50"

43"

32"

androidtv

Standard lineup including space saving size for more implementation options in business use

**Peak Brightness : 440 cd/m2\***

\*32" : 300cd/m2 ( at bottom)

## Picture Quality Features



## Colour Reproduction

Our displays come with a wide colour range and unique TRILUMINOS PRO™ algorithm can detect colour from saturation, hue and brightness to reproduce natural shades in every detail. You'll enjoy colours that are closer to those seen in the real world.



## Cosmetic Design



Logo position



All Side Terminal Position



Flat bottom bezel

## 24/7 Portrait Tilt



# BZ-series Specifications

## High-end Line

		FW-100BZ40J	FW-85BZ40H	FW-75BZ40H	FW-65BZ40H	FW-55BZ40H	FW-50BZ35J	FW-43BZ35J		
General features	Screen Size	100"	85"	75"	65"	55"	50"	43"		
	Brightness (cd/m²)	Typ. 600 / Peak 940	Typ. 620 / Peak 850				570	560		
	Native contrast ratio	9,000:1	4,000:1	6,000:1			5,000:1	4,000:1		
	Dynamic contrast ratio	600,000:1	600,00:1			550,00:1	500,000:1	400,000:1		
	Response Time (ms)	7	6	8			6			
	Display resolution (H x V, pixels)	3,840 x 2,160								
	HDR (High Dynamic Range) compatibility	Yes(HDR10,HLG,Dolby Vision)								
	Aspect Ratio	16:9								
Display features	Portrait/Tilt Compatibility¹	Yes								
	Dimming type	Local Dimming					Frame Dimming			
	Display device	LCD								
	Backlight type	Direct (Full Array LED)	Direct(Full Array LED)				Direct LED			
	4K Processor	Cognitive Processor XR	4K HDR Processor X1							
	Operation time	24/7(TBD)	24/7					24/7(TBD)		
	Wide Mode	Wide Zoom / Normal / Full / Zoom	Auto/Wide Zoom/Normal/Full/Zoom					Wide Zoom / Normal / Full / Zoom		
	4:3 Default	Yes								
Video Specs	Video Processing	XR 4K Upscaling	4K X-Reality PRO							
	Motion enhancer	XR Motion Clarity, Auto mode	X-Motion Clarity, Auto mode					Motionflow XR 960Hz (Native 120Hz), Auto mode		
	TRILUMINOS Display	XR Triluminos Pro	TRILUMINOS DISPLAY					TRILUMINOS PRO		
	Viewing Angle (Right/Left)	178(89/89) degree								
	Viewing Angle (Up/Down)	178(89/89) degree								
	HDMI Signal	4096x2160p (24, 60Hz), 3840x2160p (24, 30, 60, 120Hz), 1080p (30, 60, 120Hz), 1080i (60Hz), 1080/24p, 1080i (60Hz), 720/24p, 480p	4096x2160p (24,60Hz), 3840x2160p (24,30,60,120Hz), 1080p (30,60,120Hz), 1080/24p, 1080i (60Hz), 720p (30,60Hz), 720/24p, 480p					4096x2160p (24, 60Hz), 3840x2160p (24, 30, 60, 120Hz), 1080p (30, 60, 120Hz), 1080/24p, 1080i (60Hz), 720p (30, 60Hz), 720/24p, 480p		
	Audio Specs	Speaker Position	Down Firing	Side Back + Down Firing					Down Firing	
		Audio Power Output	10W + 10W							
Professional features	Professional Hidden mode	Pro Mode								
	HDMI auto wake-up	Yes								
	HTML5 platform	Yes								
	Multicast/IPTV	Yes								
	Operating System²	Android 10	Android 9.0 Pie					Android 10		
	On-board Storage (GB)	16GB³								
Network Specs	Wi-Fi Direct	Yes								
	Wi-Fi Certified	Yes								
	Wireless LAN	Integrated								
Convenience features	USB playback codecs	MPEG1:MPEG1 / MPEG2PS:MPEG2 / MPEG2TS(HDV, AVCHD):MPEG2, AVC / MP4(XAVC S):AVC, MPEG4, HEVC / AVI:Xvid, MotionJpeg / ASF(WMV):VC1 / MOV:AVC, MPEG4, MotionJpeg / MKV:Xvid, AVC, MPEG4, VP8.HEVC / WEBM:VP8 / 3GPP:MPEG4, AVC / MP3 / ASF(WMA) / LPCM / WAV / MP4AAC / FLAC / JPEG								
	On Screen Clock	Yes								
	Sleep Timer	Yes								
	On/Off Timer	Yes								
	Chromecast built-in	Yes								
	Apple AirPlay (Internet required)	Yes								
	Control Specs	IP Control	Yes							
RS-232C Control		1 (Side)								
HDMI-CEC		Yes								
Inputs and outputs	HDCP	HDCP2.3 (for HDMI1/2/3/4)								
	Composite Video Input(s)	1 (Side, Mini jack)								
	HDMI inputs total	4 (4Side)								
	Analog Audio Input(s) (Total)	1 (Side Analog Conversion)								
	Digital Audio Output(s)	1 (Side)								
	USB ports	2 (Side)								
	Ethernet inputs	1 (Side)								
Design features	Frame color	Black								
	Stand Design	Slim Blade Stand	Metal Blade Stand				Slim Blade Stand			
	VESA® Hole Spacing Compatible	Yes								
	VESA® Hole Pitch(W x H)	600 x 400 mm	400x400 mm	300x300 mm			200 x 200 mm			
Environment specs	Screen Size for WEB(diagonal, cm, integer or 1st decimal)	253 cm	215.0 cm	189.0 cm	164.0 cm	139.0 cm	126 cm	108 cm		
	Rated Power Consumption	204 W	189 W	152 W	121 W	97 W	85 W	64 W		
	Power Consumption (in Standby)	0.5 W								
	Dynamic Backlight Control	Yes								
	Power Saving Mode / Back Light Off Mode	Yes								
Measurements	Dimension of TV without Stand (W x H x D)	2,260 x 1,297 x 98 mm	1,899x1,089x72 mm	1,674x961x71 mm	1,450x833x70 mm	1,231x710x70 mm	1,119 x 649 x 70 mm	964 x 563 x 69 mm		
	Dimension of TV with Stand (W x H x D)	2,260 x 1,346 x 475 mm	1,899x1,162x441 mm	1,674x1,034x410 mm	1,450x903x338 mm	1,231x780x338 mm	1,119 x 715 x 286 mm	964 x 628 x 286 mm		
	Dimension of Package Carton (W x H x D)	2,440 x 1,558 x 378 mm	2,036x1,232x258 mm	1,810x1,107x186 mm	1,574x958x184 mm	1,348x833x160 mm	1,225 x 782 x 141 mm	1,070 x 695 x 141 mm		
Weight	Weight of TV without Stand	88.9 kg	45.8 kg	32.9 kg	22.2 kg	16.5 kg	12.7 kg	10.2 kg		
	Weight of TV with Stand	92.6 kg	47.7 kg	34.4 kg	23.2 kg	17.5 kg	13.3 kg	10.7 kg		
	Weight of Package Carton(Gross)	129 kg	62kg	46kg	31kg	23kg	19 kg	14 kg		
Service & Warranty	Standard Warranty	3 years included as standard								
	PrimeSupport Reference (2 years extension)	PSP.PROBRAVIA7.PC2	PSP.PROBRAVIA5.PC2	PSP.PROBRAVIA4.PC2	PSP.PROBRAVIA3.PC2	PSP.PROBRAVIA2.PC2	PSP.PROBRAVIA2.PC2	PSP.PROBRAVIA2.PC2		



# BZ-series Specifications

## Standard Line

Standard Line		FW-75BZ30J	FW-65BZ30J	FW-55BZ30J	FW-50BZ30J	FW-43BZ30J	FW-32BZ30J	
General features	Screen Size	75"	65"	55"	50"	43"	32"	
	Brightness (cd/m²)	440					300	
	Native contrast ratio	1,200:1			5,000:1	1,200:1	3,000:1	
	Dynamic contrast ratio	300,000:1					260,000:1	
	Response Time (ms)	11		10	9	10		
	Display resolution (H x V, pixels)	3,840 x 2,160						
	HDR (High Dynamic Range) compatibility	Yes (HDR10, HLG, Dolby Vision)						
	Aspect Ratio	16:9						
Display features	Portrait/Tilt Compatibility¹	Yes						
	Dimming type	Frame Dimming						
	Display device	LCD						
	Backlight type	Direct LED					Edge LED	
	4K Processor	4K HDR Processor X1						
	Operation time	24/7(TBD)						
	Wide Mode	Wide Zoom / Normal / Full / Zoom						
	4:3 Default	Yes						
Video Specs	Video Processing	4K X-Reality PRO						
	Motion enhancer	Motionflow XR 240Hz (Native 60Hz), Auto mode						
	TRILUMINOS Display	TRILUMINOS PRO						
	Viewing Angle (Right/Left)	178(89/89) degree						
	Viewing Angle (Up/Down)	178(89/89) degree						
	HDMI Signal	4096x2160p (24, 60Hz), 3840x2160p (24, 30, 60Hz), 1080p (30, 60Hz), 1080/24p, 1080i (60Hz), 720p (30, 60Hz), 720/24p, 480p						
	Audio Specs	Speaker Position	Down Firing					
	Audio Power Output	10W + 10W					5W + 5W	
Professional features	Professional Hidden mode	Pro Mode						
	HDMI auto wake-up	Yes						
	HTML5 platform	Yes						
	Multicast/IPTV	Yes						
	Operating System²	Android 10						
	On-board Storage (GB)	16GB*³						
Network Specs	Wi-Fi Direct	Yes						
	Wi-Fi Certified	Yes						
	Wireless LAN	Integrated						
Convenience features	USB playback codecs	MPEG1:MPEG1 / MPEG2PS:MPEG2 / MPEG2TS(HDV, AVCHD):MPEG2, AVC / MP4(XAVC S):AVC, MPEG4, HEVC / AVI:Xvid, MotionJpeg / ASF(WMV):VC1 / MOV:AVC, MPEG4, MotionJpeg / MKV:Xvid, AVC, MPEG4, VP8.HEVC / WEBM:VP8 / 3GPP:MPEG4, AVC / MP3 / ASF(WMA) / LPCM / WAV / MP4AAC / FLAC / JPEG						
	On Screen Clock	Yes						
	Sleep Timer	Yes						
	On/Off Timer	Yes						
	Chromecast built-in	Yes						
	Apple AirPlay (Internet required)	Yes						
Control Specs	IP Control	Yes						
	RS-232C Control	1 (Side)						
	HDMI-CEC	Yes						
Inputs and outputs	HDCP	HDCP2.3 (for HDMI1/2/3/4)						
	Composite Video Input(s)	1 (Side, Mini jack)						
	HDMI inputs total	4 (4Side)						
	Analog Audio Input(s) (Total)	1 (Side Analog Conversion)						
	Digital Audio Output(s)	1 (Side)						
	USB ports	2 (Side)						
	Ethernet inputs	1 (Side)						
Design features	Frame color	Black						
	Stand Design	Slim Blade Stand	Slim Blade Stand	Slim Blade Stand	Slim Blade Stand	Slim Blade Stand	Stand	
	VESA® Hole Spacing Compatible	Yes	Yes	Yes	Yes	Yes	Yes	
	VESA® Hole Pitch(W x H)	300 x 300 mm			200 x 200 mm		100 x 200 mm	
Environment specs	Screen Size for WEB(diagonal, cm, integer or 1st decimal)	189 cm	164 cm	139 cm	126 cm	108 cm	80 cm	
	Rated Power Consumption	160 W	130 W	97 W	86 W	60 W	40 W	
	Power Consumption (in Standby)	0.5 W	0.5 W	0.5 W	0.5 W	0.5 W	0.5 W	
	Dynamic Backlight Control	Yes						
	Power Saving Mode / Back Light Off Mode	Yes						
Measurements	Dimension of TV without Stand (W x H x D)	1,686 x 969 x 72 mm	1,462 x 842 x 71 mm	1,243 x 719 x 71 mm	1,126 x 653 x 70 mm	972 x 567 x 70 mm	726 x 430 x 76 mm	
	Dimension of TV with Stand (W x H x D)	1,686 x 1,045 x 410 mm	1,462 x 912 x 338 mm	1,243 x 787 x 338 mm	1,126 x 718 x 286 mm	972 x 632 x 286 mm	726 x 454 x 172 mm	
	Dimension of Package Carton (W x H x D)	1,824 x 1,114 x 187 mm	1,588 x 965 x 184 mm	1,362 x 840 x 160 mm	1,240 x 796 x 141 mm	1,070 x 695 x 141 mm	814 x 551 x 152 mm	
Weight	Weight of TV without Stand	31.6 kg	21.6 kg	15.7 kg	12.3 kg	10 kg	7.5 kg	
	Weight of TV with Stand	32.9 kg	22.5 kg	16.6 kg	12.9 kg	10.5 kg	7.7 kg	
	Weight of Package Carton(Gross)	49 kg	31 kg	23 kg	17 kg	14 kg	10 kg	
Service & Warranty	Standard Warranty	3 years included as standard						
	PrimeSupport Reference (2 years extension)	PSP.PROBRAVIA3.PC2	PSP.PROBRAVIA3.PC2	PSP.PROBRAVIA2.PC2	PSP.PROBRAVIA2.PC2	PSP.PROBRAVIA1.PC2	PSP.PROBRAVIA1.PC2	

# Options & Accessories



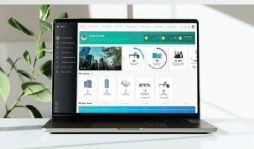
## BRAVIA Meeting Free

With BRAVIA Meeting Free turn a regular display into a dedicated meeting room display. Easily show Home Screen Content that meets the needs of each company, such as how to use meeting room equipment, the company logo, and messages for visitors on the home screen of the meeting room display.



## BRAVIA Signage Free (WQF-BS1F)

BRAVIA Signage Free is an easy-to-use standalone signage player application, allowing you to display video, photos and HTML5 content directly from a connected USB flash memory. It's quick and intuitive to set up screens, edit and preview playlists and schedules using the BRAVIA display's remote controller.



## TEOS Workplace Solutions

Control and manage BRAVIA Professional Displays remotely with TEOS by Sony. Create and schedule signage content, monitor and update displays, enable wireless mirroring from laptops to BRAVIA Professional Displays in meetings, and much more. Visit [pro.sony/teos](https://pro.sony/teos) for more information.

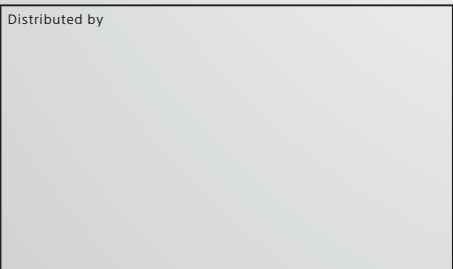


## Different accessories

Touch overlays, front covers, kiosks and totems to suit your needs.

For full features visit  
[pro.sony/displays](https://pro.sony/displays)

© 2021 Sony Corporation. All rights reserved. Reproduction in whole or in part without permission is prohibited. Features and specifications are subject to change without notice. All non-metric weights and measurements are approximate. 'Sony' and 'BRAVIA' are registered trademarks or trademarks of Sony Corporation. All other trademarks are the property of their respective owners.



**SONY**