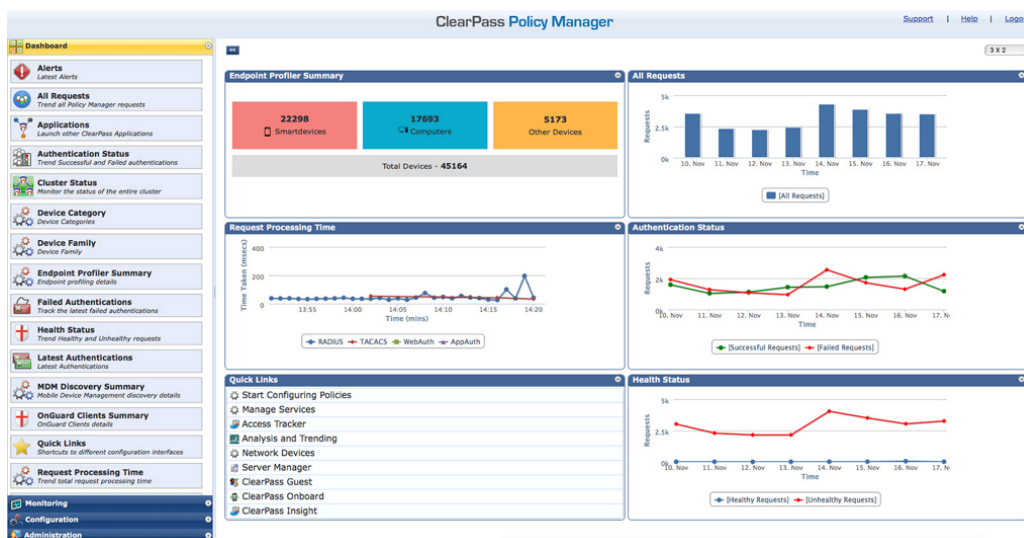


HPE Aruba Networking ClearPass Policy Manager

HPE Aruba Networking ClearPass N1000 1G Hardware Appliance (S3N67A)



What's new

- New Hardware Appliances: N1000
Featuring increased RAM and conversion to SSD with support for serial console communication, ideal for remote data centers.
- New Hardware Appliances: N3000, N3001
Featuring highspeed SSD for better data replication in clustering and increased RAM to support a higher number of concurrent connections.
- Intuitive policy configuration templates and

Overview

The HPE Aruba Networking ClearPass Policy Manager (CPPM) provides role- and device-based network access control for employees, contractors and guests across multi-vendor wired, wireless and VPN infrastructures. With a built-in context-based policy engine, RADIUS, TACACS+ protocol support, device profiling and comprehensive posture assessment, onboarding, and guest access options, ClearPass is unrivaled as a foundation for network security.

CPPM supports enterprise level security with self-service capabilities for end-user convenience. Users can configure their own devices for enterprise use or Internet access. This comprehensive and scalable policy management platform that goes beyond traditional authentication, authorization and accounting (AAA) solutions to deliver extensive



visibility troubleshooting tools.

- Supports multiple authentication/authorization sources (AD, LDAP, SQL dB) within one service.
- Self-service device onboarding with built-in certificate authority (CA) for bring your own device (BYOD).
- Role-based network access enforcement for multi-vendor Wi-Fi, wired and VPN networks with industry-leading performance, scalability, high availability and load balancing.

enforcement capabilities for IT-owned and bring-your-own-device (BYOD) security.

Features

Enterprise Level Security for Mobile Environments

HPE Aruba Networking ClearPass Policy Manager is a wired and wireless, multi-vendor policy platform to centrally enforce enterprise-grade access security. Granular policy enforcement is based on a user's role, device type, device health, location, and time-of-day.

Offers extensive multi-vendor wireless, wired and VPN infrastructure support which enables IT to easily rollout enterprise level security mobility policies across the enterprise.

Deployment scalability supports tens of thousands of devices and authentications which surpasses the capabilities offered by legacy authentication, authorization and accounting (AAA) solutions.

The HPE Aruba Networking ClearPass Policy Manager is available as hardware or as a virtual appliance.

Advanced Policy Management

With HPE Aruba Networking ClearPass Policy Manager, organizations can deploy wired and wireless networking using standards-based 802.1X enforcement for strong authentication.

HPE Aruba Networking ClearPass guest functions simplifies workflow processes so that receptionists, employees and other non-IT staff can create temporary guest accounts for WAP2 Wi-Fi and wired Internet access.

The optional HPE Aruba Networking ClearPass Onboard add-on provides automated provisioning of Windows, Mac OS X, iOS, Android, Chromebook, and Ubuntu devices via a user driven self-guided portal.

HPE Aruba Networking ClearPass OnGuard, an optional add-on, leverages persistent and dissolvable agents, to perform advanced endpoint posture assessments over wireless, wired and VPN connections.

Stronger, Together – Security in Depth

With over 140 security technology partners including PaloAlto Networks, Duo and Carbon Black, HPE Aruba Networking ClearPass safeguards your business from the inside, acting against what the perimeter does not see.

Multi-vendor is in our culture. Delivering enterprise infrastructure, securing wired and wireless, mobile and fixed assets, Corporate, IOT and bring your own device (BYOD) environments.

ClearPass has received Marsh Cyber Catalyst Designation

ClearPass family of identity-based access control security solutions has been recognized for its ability to reduce risk by insurers in the Cyber Catalyst



Technical specifications

HPE Aruba Networking ClearPass N1000 1G Hardware Appliance

Product Number	S3N67A
Differentiator	Hardware model: Advantech FWA-2012 CPU: Intel Atom C3758R with 8 cores (8 threads); Memory: 16 GB; Hard drive storage:(1) SSD (1TB) M.2; Mangement: N/A; Minimum software version: ClearPass Policy Manager 6.11
Certifications	FIPS 140-2 level 1 certificate 4473 Common Criteria NDCPPv2.2e NIAP Common Criteria NDCPPv2.1+AUTHSVR 1.0 VID 11324 IPv6 Ready (including USGv6 r-1)
Input voltage	100/240 VAC auto-selecting
Regulatory	RFC standards: 2246, 2248, 2407, 2408, 2409, 2548, 2759, 2865, 2866, 2869, 2882, 3079, 3579, 3580, 3748, 3779, 4017, 4137, 4301, 4302, 4303, 4308, 4346, 4514, 4518, 4809, 4849, 4851, 4945, 5176, 5216, 5246, 5280, 5281, 5282, 5424, 5755, 5759, 6614, 6818, 6960, 7030, 7170, 7296, 7321, 7468, 7748, 7815, 8031, 8032, 8247, 8446, 8709, 8894, 8908
Wi-Fi antenna	#BLANK##
Heat dissipation	#BLANK##
Connectivity, standard	Network interfaces: 4 x 1GbE
Ports	RJ-45: N1000 does not include integrated video, only serial interface is supported.
Mounting	Included (mounting ears)
Power consumption	Power supply: (1) 150W
Radio coverage	#BLANK##
Warranty	Hardware warranty: 1-year* on hardware parts and 90-day on software, both can be extended with support contract. See http://www.hpe.com/networking/warrantysummary for warranty and support information included with your product purchase. Software and perpetual software license warranty: 90 days* Note: * Extended with support contract



For additional technical information, available models and options, please reference the [QuickSpecs](#)

HPE Aruba Networking Services

HPE Aruba Networking services simplify and accelerate the network technology lifecycle, enabling your network to scale with better predictability and cost-effectiveness. Whether you operate your own network and need to improve your IT efficiencies, or you want to offload some of the burden, we have the services you need to reach your goals.

Learn more about what HPE Services - Aruba Networking has to offer at: <https://www.hpe.com/edge/services>

Support Services

Our support portfolio provides the essential support elements as well as proactive and preventive features to help you improve your team's productivity and get the most from your network. Our support customers benefit from faster issue resolution, simplified operations and efficiencies, and reduced network issues.

Professional Services

With deep intellectual capital and purpose-built tools, our team delivers a range of standard and custom professional services designed to accelerate your value from HPE Aruba Networking technology.

Project based services include: Annual subscription services include:

- Planning, audit, and assessment
- Architecture review and design
- Deployment, migration, and knowledge transfer
- Network optimization
- Intelligent Operations
- Customer Experience Management

Our [Education Services](#) allow your team to come up to speed quickly.

HPE GreenLake for Networking

Our NaaS solution, is part of the HPE GreenLake services family, and simplifies network operations, accelerates equipment handling, and increases the value of your HPE Aruba Networking solution. If you need expert guidance and automation-based operations for your team, please explore our NaaS approach through HPE GreenLake for Networking.

Make the right purchase decision.
Contact our presales specialists.



Contact us

Visit [ArubaNetworks.com](https://www.arubanetworks.com)

