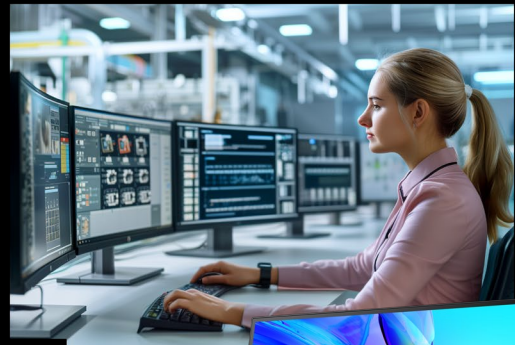


ViewFinity S8

S80UD

27" Monitor
32" Monitor

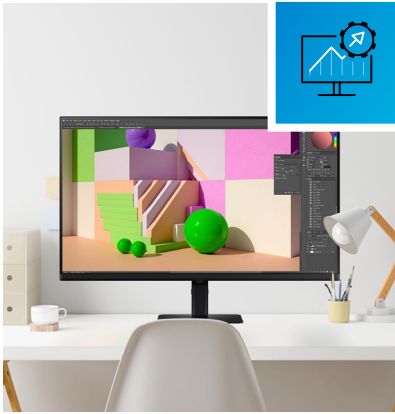
LS27D800UJAU
LS32D800UJAU



For Life.
For work.



Experience detail like never before and true-to-life color representation with the Samsung ViewFinity S80UD monitor for professionals.



Experience

From the design of the bezels to intuitive tools, our monitors offer enhanced user experience.

- **Flat Display** (27" IPS, 32" VA)
- **Connectivity** (1x DisplayPort, 1x HDMI, 3x USB, 1x USB-C)
- **1.07 Billion Colors**
- **Wide Color Gamut** (99% sRGB)
- **Multitasking Tools** (PiP, PbP)
- **KVM Switch** for better multitasking and multi-device/OS productivity



Well-being

Our products positively affect people's ability to work effectively, maximising comfort and convenience.

- **Adaptive Picture** (Auto adjust brightness & color)
- **Eye Saver Mode** (Minimize blue light emission)
- **Flicker Free**
- **Ergonomic Stand** (HAS, Tilt, Swivel & Pivot)
- **TÜV Intelligent Eye Care**¹
- **Easy Setup Stand**² (5 sec. installation)



Eco-steps

Together we're working to push technology forward with more environmentally conscious innovations.

- **Save Energy**³ (use up to 10% less energy)
- **TCO Certified**⁴ (9.0)
- **EPEAT Silver**⁵
- **Zero Chemical Coatings**⁶
- **Staple-less boxes**⁶
- **Life Cycle Emission**⁷ (kg CO2e/f.u)

Please see last page for disclaimers.

The power to perfect professionals.

SAMSUNG

ViewFinity S8 - S80UD

LS27D800UJAU
LS32D800UJAU



Key features

UHD **UHD resolution:** Visual excellence that professionals demand. UHD (3840x2160) resolution reveals greater levels of detail with higher pixel density. Professionals can dive into greater color detail and more screen space to build intricate designs, complex diagrams and dynamic video content with an enhanced workflow.

HDR **1.07 billion colors with HDR10:** See a wider gamut of colors for stunning accuracy and detail. HDR10 provide near limitless hues and true-to-life color representation, with darker darks and the brighter brights.

USB-C, LAN and Daisy Chain support: Connect it all to elevate your workspace. A USB-C port allows for 90W charging and data transfer at the same time, while a built-in LAN port offers seamless Ethernet connectivity for laptops.

Built-in KVM Switch: A built-in KVM switch lets you connect and control two sources to your monitor at once, with just one keyboard and mouse. You choose: split screen, Picture in Picture or Picture by Picture are all possible. Be more efficient and remove multi-device hassle with easy input switching and multitasking.

The perfect pose



Swivel

Tilt

Pivot

HAS

Height Adjustable Stand

Images for demonstration purposes only and may not depict the model in this document.

3 year warranty

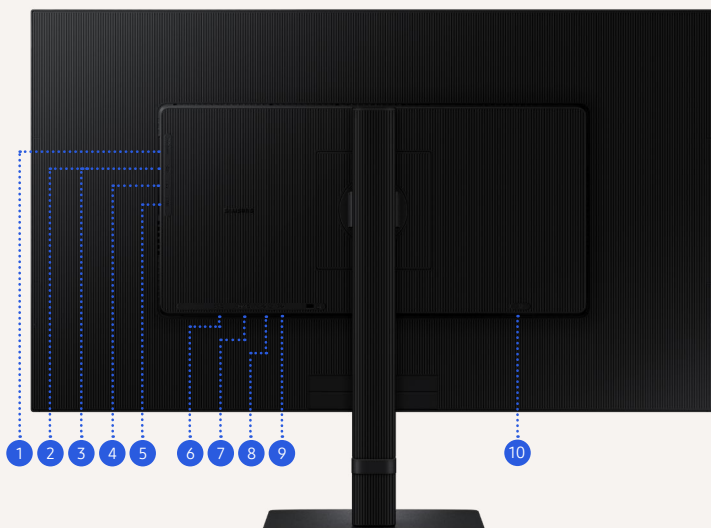
What's in the box?

Power Cable
USB-C Cable

Accessories may differ by country.

Connectivity

- 1 USB-A
- 2 USB-A
- 3 USB-A
- 4 Headphone IN
- 5 LAN
- 6 DisplayPort IN
- 7 HDMI IN
- 8 USB-B
- 9 USB-C
- 10 Power



Please see last page for disclaimers.

The power to perfect professionals.

SAMSUNG

ViewFinity S8 – S80UD



27" Model

32" Model



		LS27D800UUAU	LS32D800UUAU
Display	Screen Size	27"	32"
	Resolution	3840 x 2160	3840 x 2160
	Flat/Curved	Flat	Flat
	Aspect Ratio	16:9	16:9
	Panel Type	IPS	VA
	Brightness in cd/m2 (Typ)	350	350
	Contrast Ratio Static	3000:1	3000:1
	Color Support	1.07 Billion	1.07 Billion
	Color Coverage	99% sRGB	99% sRGB
	HDR	HDR10	HDR10
	Refresh rate	60Hz	60Hz
	Response Time (GTG)	5ms	5ms
Connectivity	D-Sub (Analog)	No	No
	DVI	No	No
	HDMI	1x 2.0	1x 2.0
	DisplayPort (DP)	1x 1.2	1x 1.2
	USB-C	1x (90W charging)	1x (90W charging)
	USB 3.0	3x USB 3.0 (3dn)	3x USB 3.0 (3dn)
	Ethernet (LAN)	1x	1x
Other	Headphone	1x	1x
	Speakers	No	No
	Built-in Camera / KVM Switch	No / Yes	No / Yes
	Additional Features	TÜV Intelligent Eye Care ¹ , Save Energy ³ , Flicker Free, Eye Saver Mode, Auto Source Switch +	TÜV Intelligent Eye Care ¹ , Save Energy ³ , Flicker Free, Eye Saver Mode, Auto Source Switch +
	Certifications, Standards & Licenses	TCO Certified (9.0) ⁴ EPEAT Silver ⁵	TCO Certified (9.0) ⁴ EPEAT Silver ⁵
	Ergonomic Stand	Tilt: -2.0°(±2.0°) ~ 25.0°(±2.0°)	Tilt: -2.0°(±2.0°) ~ 25.0°(±2.0°)
		Swivel: -30.0°(±3.0°) ~ 30.0(±3.0°)	Swivel: -30.0°(±3.0°) ~ 30.0(±3.0°)
		Pivot: -92.0°(±2.0°) ~ 92.0°(±2.0°)	Pivot: -92.0°(±2.0°) ~ 92.0°(±2.0°)
		HAS: 120.0mm(±5.0mm)	HAS: 120.0mm(±5.0mm)
	Power Consumption (Typ)	25W	33W
Set Dimension (WxHxD)	With Stand: 612.9 x 556.6 x 220mm	With Stand: 713.9 x 585 x 220mm	
	Without Stand: 612.9 x 367.7 x 41.6mm	Without Stand: 713.9 x 424.7 x 41.8mm	
Set Weight	With Stand: 6.1kg	With Stand: 6.9kg	
	Without Stand: 3.7kg	Without Stand: 4.5kg	

Please see last page for disclaimers.

The power to perfect professionals.

SAMSUNG

All tests and measurements were conducted by Samsung internally.

¹Intelligent Eye Care is certified by TÜV Rheinland. For more details, visit www.tuv.com.

²Installation time is estimated based on internal testing.

³Based on internal testing data of S80PB, S80TB and T45F monitors only. Testing compared energy usage of these models with Eco Saving Plus mode, also known as Save Energy on newer models, switched on high setting and switched off. Actual energy savings may vary based on usage conditions, brightness levels, and model selected. Eco Saving Plus is not available in Dynamic Contrast Mode, Game Mode, Eye Saver Mode, or when PIP/PBP Mode is on.

⁴See www.tcocertified.com for more information.

⁵See www.epeat.net for more information.

⁶All models are staple free. All recycled plastics used in our monitors are chemical spray-free.

⁷LS27D800UAUXEN 295.6 (kg CO₂e/f.u), LS32D800UAUXEN 350.2 (kg CO₂e/f.u). The Product Carbon Footprint assessment was completed in accordance with ISO 14067 – Greenhouse gases – Carbon footprint of products – Requirements and guidelines for quantification. Usage Scenario: 40% on mode, 5% sleep mode, 55% off mode, 4 years Electricity Carbon Emission Factor: European Union (IEA2022) CO₂ Emission results may vary from region and time of evaluation.

Samsung Electronics Co. Ltd.

Samsung Electronics Co., Ltd. inspires the world and shapes the future with transformative ideas and technologies. The company is redefining the worlds of TVs, smartphones, wearable devices, tablets, cameras, digital appliances, medical equipment, network systems, and semiconductor and LED solutions. For the latest news, please visit the Samsung Newsroom at news.samsung.com.

Copyright © 2024 Samsung Electronics Co. Ltd. All rights reserved. Samsung is a registered trademark of Samsung Electronics Co. Ltd. Specifications and designs are subject to change without notice. Non-metric weights and measurements are approximate. All data were deemed correct at time of creation. Samsung is not liable for errors or omissions. All brand, product, service names, and logos are trademarks and/or registered trademarks of their respective owners and are hereby recognized and acknowledged.

Samsung Electronics Co. Ltd.
416, Maetan 3-dong, Yeongtong-gu, Suwon-si, Gyeonggi-do 443-772, Korea.