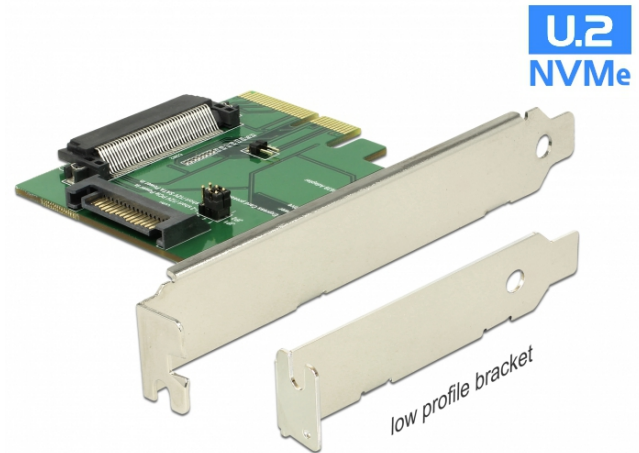


# Delock PCI Express x4 Card > 1 x internal U.2 NVMe SFF-8639 female

## Description

This PCI Express card by Delock expands the PC by one U.2 interface. It can be connected to e.g. the 2.5" Intel® 750 Series NVMe SSD.



## Specification

- Connectors:  
internal:  
1 x U.2 SFF-8639 female  
1 x PCI Express x4, V3.0  
1 x SATA 15 pin plug
- 2 x jumper to set the power supply via PCIe or SATA interface
- 3 x LED indicator
- Supports NVM Express (NVMe)

## System requirements

- Windows 7/7-64/8.1/8.1-64/10/10-64, Linux ex Kernel 4.6 / Kernel 4.9.4
- PC with one free PCI Express x4 / x8 / x16 / x32 slot

## Package content

- PCI Express card
- Low profile slot bracket
- 3 x screw
- User manual

Item no. 89672

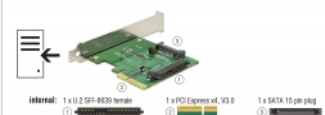
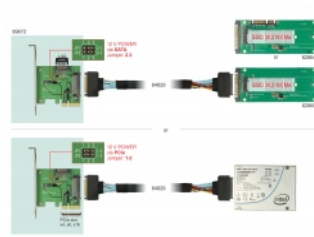
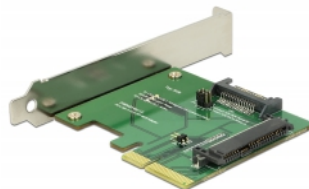
EAN: 4043619896721

Country of origin: Taiwan, Republic of China

Package: Retail Box



## Images



General	
function:	NVM Express (NVMe)
Specification:	U.2
Supported operating system:	Linux ex Kernel 4.6 Linux ex Kernel 4.9.4 Windows 7 32-bit Windows 7 64-bit Windows 8.1 32-bit Windows 8.1 64-bit Windows 10 32-bit Windows 10 64-bit
LED indicator:	3 x
Interface	
Internal:	1 x PCI Express x4, V3.0 1 x SATA 15 pin male 1 x U.2 SFF-8639 female
Technical characteristics	
Jumper:	2 x
Physical characteristics	
Slot bracket:	low profile standard