

ThinkCentre M70t Gen 3

The ThinkCentre M70t Gen 3 tower desktop is engineered to boost productivity, delivering powerful computing performance with upgradability for various job functions, from administrative to data-intensive tasks, all while balancing cost and environmental impact. Its versatile connectivity allows users to expand their workspace with the specific devices needed for success—even another PC—with the optional new Smart Cable.

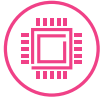
With uncompromised ThinkShield end-to-end security and the notable reliability of Lenovo's Think devices, the ThinkCentre M70t Gen 3 is ideal for today's hybrid workforce to succeed from anywhere. The Smart Power On feature improves user experience, and the green certifications and use of recyclable materials create a truly eco-friendly device.



**Smarter
technology
for all**

Lenovo

ThinkCentre M70t Gen 3



POWERFUL COMPUTING PERFORMANCE

Perfect for multitaskers in every industry, the ThinkCentre M70t Gen 3 is designed for high-velocity productivity, boasting up to 12th Gen Intel® Core™ i9 processors, with optional Intel vPRO® Essentials. With up to four DDR4 UDIMM (3200MHz) and up to 128GB memory support packed in this 13.6L chassis, complex data tasks and graphics projects are no problem.



VERSATILE CONNECTIVITY

The ThinkCentre M70t Gen 3 offers multiple I/O ports and flexible expansion slots to amplify use as your business needs grow. Get innovative device collaboration with the Smart Cable for easy USB-A and USB-C connection to support all your peripherals, even another laptop or tablet. Optional solid-state drive (SSD) storage offers speed and responsiveness, while 3D NAND technology gives your SSD more reliable performance and improved power consumption.



DEPENDABLE SECURITY

Lenovo ThinkShield security offers a combination of hardware and software solutions to protect your data—and your business. The dTPM 2.0 chip encrypts your passwords and data, while BIOS-based Smart USB protection and individual USB port disablement prevent unauthorized access via peripheral. The Kensington™ Lock slots, chassis e-locks, and more options provide physical theft security. When paired with Intel vPro® Essentials, the affordable ThinkCentre M70t Gen 3 provides additional hardware-based security capabilities for next-level protection.



ENVIRONMENTAL SUSTAINABILITY

The ThinkCentre M70t Gen 3 meets the highest environmental standards, including TCO 9.0 and EPEAT™ Gold. Lenovo is committed to creating eco-friendly products using recyclable, toxic-free components in every device. Plus, by 2025/26, 90% of PC products' packaging will be made from recycled materials.

	M70t	M70t Gen 3	Gen-to-Gen
Platform	Intel H470	Intel Q670	10-15% enhanced performance
PSU	TFX 260W 85%	TFX 260W 90%	Improved power efficiency
Rear IO	HDMI 1.4 1x Serial + Optional 1x Serial	HDMI 2.0 Flex IO (DP/HDMI/Type-C/VGA) Optional 2 Serial	Additional IO More expansion slots
Security	TPM 2.0 1 Serial + 1x Optional Serial	TPM 2.0 Self-healing BIOS Optional Intel vPRO® Essential	Enhanced security and manageability features



purposeful design

The ThinkCentre M70t Gen 3 tower desktop provides intentional features like Smart Power On that allows users to turn on the desktop using a simple keyboard shortcut, as well as the new Smart Cable that delivers on ease and speed.

trusted quality

Because it meets MIL-STD 810H guidelines with 12 methods and 20 procedures, the ThinkCentre M70t Gen 3 reflects Lenovo's dedication to product quality, durability, and reliability. Tested against real-world challenges like volt surges, shock, vibration, and extreme temperatures, this desktop is ready for anything.

relentless innovation

We are inspired by our customers and what they want from our devices, and it shows in additions like fast-charge USB ports located on the front panel, Smart USB protection, and much more.



ThinkCentre M70t Gen 3

Services

Lenovo offers a comprehensive portfolio of end-to-end services to support and protect your investment—so you can focus on the job at hand, not IT.



PREMIER SUPPORT

Premier Support provides direct 24x7x365 access to elite Lenovo engineers for comprehensive hardware and OEM software support, priority on service delivery, repair of parts, and many more. This ensures that customers' issues and concerns are resolved quickly, saving them costs and enhancing productivity.



CO₂ OFFSET SERVICES

Make offsetting carbon emissions simple and within your control. You can use this service to compensate for environmental impact based on realistic emissions over an average product lifecycle. It is offered as an option at point of purchase, with tangible proof of CO₂ emission that offset.



DEVICE AS A SERVICE (DaaS)

Combine hardware, services, and software into a single, flexible solution to maintain predictable monthly costs. This innovative, fully managed model drives down capital IT expenses while ensuring your employees experience the latest technology to keep them secure and productive.

Accessories

Lenovo Essential FHD Webcam

Enjoy productive pixel-perfect high definition FHD 1080P video conferencing. Two integrated mics capture crisp, clear audio from every angle and attached privacy shutter lets you choose to be heard but not seen. Easy setup with plug-and-play USB connectivity.



PN: 4XC1B34802

Kensington® MicroSaver™ 2.0 Twin Cable Lock

Secure two devices with the same cable lock. Engineered to be the smallest, strongest lock for desktop, laptop, monitors, and other devices, the MicroSaver 2.0 represents the next generation of cable security.



PN: 4XE0N80915

Lenovo Essential Wireless Keyboard and Mouse

This combo allows you to connect both keyboard and mouse using only one nano USB wireless receiver. The slim, wireless keyboard has a responsive key feeling, and includes an adjustable tilt leg, numeric keypad, and spill resistant design. The full-size wireless mouse accommodates left- and right-handed users.



PN: 4X30M39xxx

ThinkCentre M70t Gen 3

performance

PROCESSOR

Up to Intel vPro® Essentials with 12th Generation Intel® Core™ i9 Processors

OPERATING SYSTEM

Windows 11 (Pro & Home)
Windows 11 Downgrade (Pro)
Windows 10 IoT

GRAPHICS

Intel® UHD Graphics 730 / 710
Intel® Iris™ Xe MAX Graphics DG1E 2GB
AMD Radeon™ RX 6400 4GB
NVIDIA GeForce RTX3050 4GB

MEMORY

4 DDR4 UDIMM (up to 3200MHz/128GB)

PSU

380W 92%; 310W 92%; 260W 90%; 180W 85%

connectivity

FRONT PORTS

1x USB-C 3.2 Gen 1
2x USB 3.2 Gen 1
2x USB 3.2 Gen 2
Optional Card Reader (3 in 1)
1x Audio Combo + 1x Mic

REAR PORTS

4x USB 2.0
1x Flex IO (DP/HDMI/Type-C/VGA)
2x DP 1.4
1x HDMI 2.0
2x Optional Serial
1x LAN (1G)
1x Audio-out
2x Optional PS2
1x Optional Parallel

EXPANSION SLOT

1x PCIe x16 Gen 4
2x PCIe x1

M.2 SLOT

1x M.2 SSD Gen 4
1x M.2 Wi-Fi

INTERNAL BAY

1x 3.5" HDD

EXTERNAL BAY

1x Slim ODD

WI-FI

Intel® Wi-Fi 6 2x2 AX
Wi-Fi 5 2x2 AC

security

Intel vPRO® Essentials (optional)
dTPM 2.0 chip
EC Self-healing (Level 2)
BIOS-based Smart USB Protection
Padlock Loop
Kensington™ Lock
Chassis E-Lock (optional)
Smart Cable Clip (optional)

design

EOU

Yes

DIMENSIONS

346 x 145 x 296 mm / 13.6 X 5.7 x 11.6 in

WEIGHT

4.8 kg / 10.58 lbs

manageability

Supports up to 4 monitors
Smart Power On
4-port COM add-on card

green certifications

Energy Star® 8.0
EPEAT™ Gold
RoHS
ERP LOT3
TÜV Ultra Low Noise
TCO 9.0¹

¹Varies by configuration.

