

Wacom® One

See where it takes you

Explore a bold new world of possibilities with Wacom One. Our **pen display** gives you the freedom to digitally draw, paint, edit images, take notes and collaborate. Choose from our exceptional lineup of pen display models, designed to offer you the unparalleled experience of creating directly on a high-resolution screen using a precise pen. Witness your artistic creations come alive with breathtaking accuracy and detail, as you seamlessly translate your imagination onto the screen before you. Plus, bonus software, tutorials and exciting community experience are included. So there's no limit to what you can do.



Specifications



Wacom One 13 touch
Pen display



Wacom One 12
Pen display

Screen size	13.3-inch/33.8 cm	11.6-inch/29.5 cm
Display resolution	1920x1080 pixels	
Touch	Yes	No
Surface	No parallax, Anti-glare & Anti-fingerprint	
Pen technology	Electromagnetic resonance technology (EMR), compatible with third party pens (LAMY, Staedtler, ...)	
Pen type	Tilt- & pressure-sensitive, cordless, battery-free	
Pen buttons	2x (individual button assignment)	
Connection	2x USB Type-C (USB hub function)	
Dimensions LxWxH	336x222x12 mm	299x190x11 mm
Product weight	900 grams	700 grams

Strengths of pen displays

Draw directly on screen

Like drawing with pen on paper

Easy connection with your computer or smartphone

Quick set-up allows one to get started quickly and easily

Draw & communicate on a larger screen

Extend the display of your Android phone

Ideal for both content creation & consumption

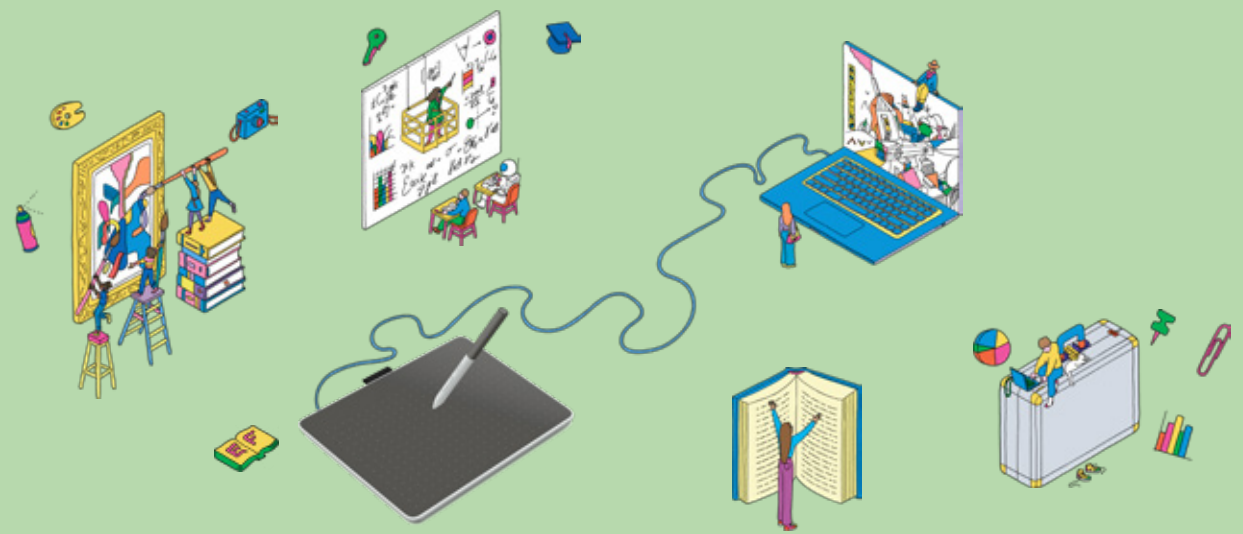
Draw, browse the web, use Social Media and much more



Wacom® One

See where it takes you

Wacom One is more than just the ideal **pen tablet** to express yourself in new ways. Like to digitally draw, paint, edit images, take notes, or collaborate? Select one of our two pen tablet models to experience the seamless precision of the pen as it glides across the ultra-responsive tablet, effortlessly bringing your artistic visions to life on your screen. Bonus software, tutorials and exciting community experiences included. There is no limit to what you can do.



Specifications



Wacom One M
Pen tablet



Wacom One S
Pen tablet

Active area size	8.5x5.3-inch/216x135 mm (similar to A5)	6.0x3.7-inch/152x95 mm (similar to A6)
Surface	High friction for pen-on-paper feeling	
Pen technology	Electromagnetic resonance technology (EMR), compatible with third party pens (LAMY, Staedtler, ...)	
Pen type	Pressure-sensitive, cordless, battery-free	
Pen Buttons	2x (individual button assignment)	
Connectors	1x USB Type-C, Bluetooth 5.1	
Dimensions LxWxH	252x181x8 mm	188x141x8 mm
Product weight	350 grams	200 grams

Strengths of pen tablets

Super thin & light for mobile use

Perfect for traveling as it easily fits in a bag, or on a desk

Easy connection with your computer or smartphone

Quick set-up allows one to get started quickly and easily

Ergonomic alternative to a computer mouse

Helps prevent Repetitive Strain Injury (RSI)

Entry-level devices to enjoy premium pen experience

Wacom's best value proposition

