



Connectivity meets productivity in 4K

Dell Pro 32 Plus 4K USB-C Hub Monitor

MODEL: P3225QE

The world's # 1 monitor company*

*Dell monitors are #1 Worldwide for 10 years! Source: IDC Worldwide Quarterly PC Monitor Tracker, Q3 2024. From 2014 to 2024.

Seamless USB-C hub connectivity and 4-star eye comfort¹



Extensive connectivity options with 4K resolution and enhance visual comfort.

Connect to productivity

Simplify your setup with this versatile monitor featuring USB-C (up 90W power delivery) single-cable connectivity and an integrated RJ45 for an all-in-one hub solution. Enjoy extensive connectivity options with multiple ports for your accessories, plus quick-access, front-facing USB Type-A and USB-C (up to 15W power delivery) ports for seamless plug-and-play convenience. With compatibility across Windows and macOS, this monitor is designed to enhance productivity and streamline your workspace.

Enhanced eye comfort

This monitor achieves TÜV Rheinland® 4-star eye comfort certification – the latest industry standard for eye comfort to help reduce signs of eye fatigue. Benefit from improved ComfortView Plus, a built-in feature that reduces blue light emission to ≤35% while allowing you to see vibrant colors with 99% sRGB coverage, and 100Hz refresh rate that delivers smoother and sharper motion visuals.

See your work clearly

With In-Plane Switching (IPS) technology, this 4K monitor offers a wide 178°/178° viewing angle, so you can view your work with consistent color and image quality from virtually any angle.

Get deeper blacks and brighter whites with 1500:1 contrast ratio.

¹ Based off TÜV Rheinland® eye comfort certification.



Your connectivity hub

Reduce cable clutter with USB-C connectivity that transmits data and video while delivering up to 90W of power. Get stable Ethernet connection to your network with RJ45 Ethernet Port (1GbE) and connect your accessories via a wide variety of ports including pop-out quick access USB-C (up to 15W) and USB Type-A ports.



Enhanced eye comfort

Stay productive while ensuring eye comfort. The 100Hz refresh rate delivers smooth motion visuals, and improved ComfortView Plus reduces harmful low blue light emissions while allowing you to see vibrant colors with 99% sRGB coverage.



Multi-task with ease

Boost efficiency with Dell Display and Peripheral Manager that lets you organize multiple apps on your screen.



A better view from anywhere

See consistent images across wide viewing angles enabled by In-Plane Switching (IPS) technology and detailed images with 1500:1 contrast ratio on this 4K (3840 x 2160 resolution) monitor.



▶ [Click here to explore more.](#)

World's number 1 monitor company*

We deliver world-class monitors that have gone through rigorous development processes and stringent tests to ensure dependable performance. Get peace of mind with unmatched warranty and support options. Being environmentally forward in thinking, our monitors adhere to environment standards and are made with sustainable materials.

* Dell monitors are #1 Worldwide for 10 years! Source: IDC Worldwide Quarterly PC Monitor Tracker, Q3 2024. From 2014 to 2024.



Environmentally-forward thinking

Material innovation

Your monitor has been thoughtfully crafted with a selection of sustainable materials including up to 85% post-consumer plastic and closed-loop ITE-derived plastic¹, 100% recycled aluminum², 50% recycled steel³ and at least 20% recycled glass⁴ that make up to 31% recycled content by weight.⁵ Using recycled materials helps conserve natural resources and contributes to a lower environmental footprint.

Seamlessly modernize your tech

We can help you responsibly and securely retire your legacy IT equipment, regardless of brand, while addressing your sustainability goals.

Environmental standards

This monitor is registered EPEAT Gold with Climate+, certified ENERGY STAR® and carries the latest TCO certified designation. With the new certification, this monitor is assured to be built using renewable energy while meeting high safety standards.⁶

Packaging with purpose

This monitor ships in a box made from 100% renewable materials. We are reducing plastic waste wherever possible and transitioning to a responsible fiber-based solution.⁷ Plus, we're saving over 600 trees each year by using less paper in packaging.⁸

¹ Percentage is based on plastic weight. Based on internal analysis, January 2025. Up to 67% post-consumer recycled plastic and up to 21% closed loop ITE derived plastic.

² Recycled aluminum is in the monitor stand. Based on internal analysis, January 2025.

³ Recycled steel is in the monitor head and stand. Based on internal analysis, January 2025.

⁴ Applicable to all new monitors launching in CY 2024. Recycled glass is present in monitor panel. Based on internal analysis, January 2024.

⁵ Based on internal analysis, January 2025.

⁶ EPEAT registered where applicable. EPEAT registration varies by country. See www.epeat.net for registration status by country.

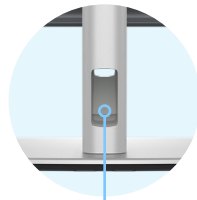
⁷ Applies to all Dell monitors launched since 2023. Made from FSC mix sources which is a mix of material from FSC certified forests, recycled content and/or FSC controlled wood. Based on internal analysis, January 2025. Cushions now made from corrugated materials.

⁸ Based on internal analysis, February 2025. Applies to monitors launching in 2025. Reductions based on monitor type and attributed to the quick start guide size and calibration sheet digitization. Calculation for trees saved based on: Detailed Calculator | 10 THOUSAND TREES. <https://www.omnicalculator.com/everyday-life/paper-weight>



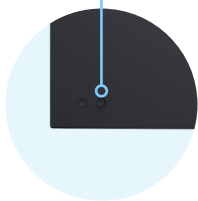
All day comfort

Get a seamless viewing experience and focus on your task with an ultra-thin bezel design.



De-clutter your workspace

Free up your desk space with the small monitor base and hide cables from view by tucking them into the riser.



Easy-to-use

Navigate the onscreen menu and adjust settings with a convenient joystick control.

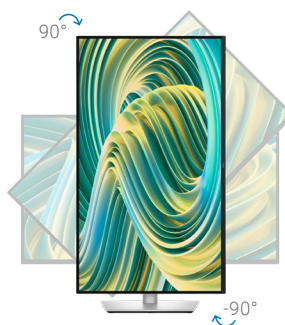


Quick access ports

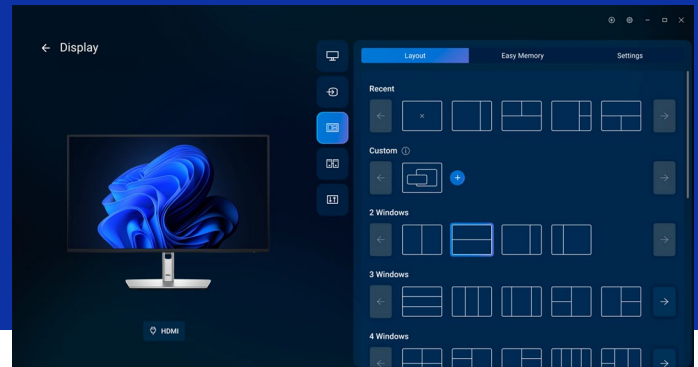
Front-facing, pop-out USB-C (with up to 15W charging) and USB Type-A ports for easy connectivity.

Work comfortably

Designed for comfort and style with adjustability features.



Dell Display and Peripheral Manager



Screen image simulated for illustrative purposes only. Monitor model varies.

Experience Dell's singular, innovative application to optimize the performance of your entire Dell PC workspace.¹

Maximize productivity

Easy Arrange tiles apps across screens with pre-set partitions and customizes up to five windows, enhancing multitasking. Easy Arrange Memory saves and restores app profiles manually, on schedule, or at start-up.

Customize your views

Work comfortably, day or night. Automate your brightness and contrast settings to match your schedule.

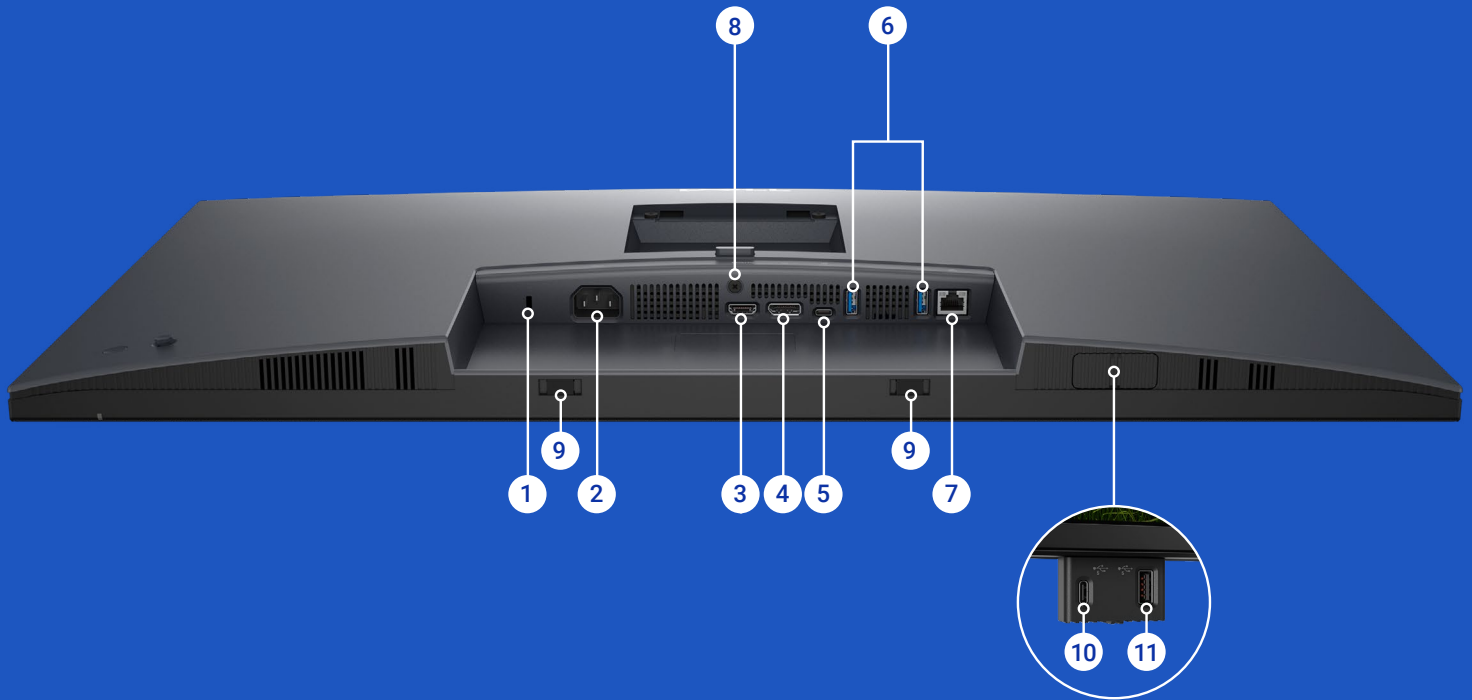
More manageable

Scale up management across your entire fleet of Dell displays and client peripherals with expanded Command Line Interface features.

[Download Dell Display and Peripheral Manager](#)


¹ Based on Dell internal analysis – December 2024.

Ports & Slots



- | | | | |
|----------|---|-----------|------------------------------------|
| 1 | Security lock slot ¹ | 7 | RJ45 Ethernet port, 1GbE |
| 2 | Power connector | 8 | Stand lock |
| 3 | HDMI | 9 | Soundbar slots (2) |
| 4 | DisplayPort 1.4 | 10 | USB-C 5Gbps downstream (Data only) |
| 5 | USB-C 5Gbps upstream (DP 1.4 Alt. mode, power delivery up to 90W) | 11 | USB 5Gbps Type-A downstream |
| 6 | USB 5Gbps Type-A downstream (2) | | |

¹ Based on Kensington Security Slot™

FEATURE	TECHNICAL SPECIFICATION
MODEL	Dell Pro 32 Plus 4K USB-C Hub Monitor - P3225QE
DIAGONAL VIEWING SIZE	800.10 mm (31.50 in.)
PANEL TYPE	In-Plane Switching (IPS) Technology
MAXIMUM PRESET RESOLUTION AND REFRESH RATE	3840 x 2160 up to 100 Hz
VIEWING ANGLE	178° vertical 178° horizontal
PIXEL PITCH	0.1816 mm x 0.1816 mm
PIXEL PER INCH (PPI)	140
CONTRAST RATIO	1500:1 (typical)
ASPECT RATIO	16:9
BACKLIGHT TECHNOLOGY	LED Edgelight System
BRIGHTNESS	350 cd/m ² (typical)
RESPONSE TIME	Normal mode: 8 ms (gray to gray) Fast mode: 5 ms (gray to gray)
COLOR GAMUT	sRGB 99% (CIE 1931) (typical)
COLOR DEPTH	1.07 Billion colors
TÜV EYECOMFORT	4 stars
CONNECTIVITY	Video port • 1 x HDMI port (HDCP2.3) (supports up to UHD 3840 x 2160 100 Hz FRL as per specified in HDMI 2.1) • 1 x Display Port 1.4 (HDCP2.3) (Support up to 3840 x 2160 100 Hz) USB port • 1 x USB-C 5Gbps upstream port (DisplayPort 1.4 Alternate mode, Power Delivery up to 90W) • 1 x USB-C 5Gbps downstream port • 3 x USB 5Gbps Type-A downstream ports Ethernet • 1 x RJ45 Ethernet port, 1GbE
USB POWER DELIVERY	USB-C upstream port up to 90W USB-C downstream port up to 15W
ADJUSTABILITY	• Height adjustment up to 150 mm • Tilt -5°/+21° • Swivel -30°/+30° • Pivot -90°/+90°
DISPLAY SCREEN COATING	Anti-glare with hard-coating 3H
SOFTWARE COMPATIBILITY	Dell Display and Peripheral Manager (DDPM) for Windows Dell Display and Peripheral Manager (DDPM) for macOS
OPERATION TIME SUPPORT	8 hours a day, 5 days a week (8/5)
VOLTAGE REQUIRED	100-240 Vac, 50/60 Hz, 2.8A
ENERGY EFFICIENCY CLASS (A TO G)	F 
POWER CONSUMPTION ¹	27.8 W (On Mode) 0.3 W (Off Mode) 0.4 W (Standby Mode) 0.8 W (Networked Standby Mode) 205 W (Max.) 25.2 W (Pon) 81 kWh (TEC)
BEZEL WIDTH – TOP	7.88 mm (0.31 in.)
BEZEL WIDTH – LEFT OR RIGHT	8.05 mm (0.32 in.)
BEZEL WIDTH – BOTTOM	13.03 mm (0.51 in.)

FEATURE	TECHNICAL SPECIFICATION
DIMENSIONS (WITH STAND) – HEIGHT (EXTENDED)	619.00 mm (24.37 in.)
DIMENSIONS (WITH STAND) – HEIGHT (COMPRESSED)	469.00 mm (18.46 in.)
DIMENSIONS (WITH STAND) – WIDTH	713.40 mm (28.09 in.)
DIMENSIONS (WITH STAND) – DEPTH	215.00 mm (8.46 in.)
DIMENSIONS (WITHOUT STAND) – HEIGHT	413.15 mm (16.27 in.)
DIMENSIONS (WITHOUT STAND) – WIDTH	713.40 mm (28.09 in.)
DIMENSIONS (WITHOUT STAND) – DEPTH	49.95 mm (1.97 in.)
STAND DIMENSIONS – HEIGHT (EXTENDED)	483.30 mm (19.03 in.)
STAND DIMENSIONS – HEIGHT (COMPRESSED)	436.42 mm (17.18 in.)
STAND DIMENSIONS – WIDTH	287.50 mm (11.32 in.)
STAND DIMENSIONS – DEPTH	215.00 mm (8.46 in.)
WEIGHT WITH PACKAGING	12.94 kg (28.53 lb)
WEIGHT WITH STAND ASSEMBLY AND CABLES	9.552 kg (20.99 lb)
WEIGHT WITHOUT STAND ASSEMBLY (WITHOUT CABLES)	6.65 kg (14.66 lb)
WEIGHT OF STAND ASSEMBLY	2.51 kg (5.53 lb)
FLAT PANEL MOUNT INTERFACE	VESA (100 mm x 100 mm)
SECURITY	Security lock slot (cable lock sold separately) Anti-theft stand lock slot (to panel)
COMPLIANT STANDARDS	• ENERGY STAR 8.0 • EPEAT Gold with Climate+ • TCO Certified and TCO Certified Edge • RoHS-compliant • Product Safety, EMC and Environmental Datasheets • Dell Regulatory Compliance Home Page • Dell and the Environment • TÜV Rheinland Eye Comfort 4 Star • BFR/PVC free monitor (excluding external cables). • Meets NFPA 99 leakage current requirements. • Arsenic-free glass and Mercury-free panel only.
TEMPERATURE RANGE	• Operating: 0°C to 40°C (32°F to 104°F) • Non-operating: -20°C to 60°C (-4°F to 140°F)
HUMIDITY RANGE	• Operating: 10% to 80% (non-condensing) • Non-Operating: 5% to 90% (non-condensing)
ALTITUDE	• Operating: 5,000 m (16,400 ft) maximum • Non-operating: 12,191 m (40,000 ft) maximum
WHAT'S INCLUDED	• Monitor with stand • Power cable • 1 x DisplayPort to DisplayPort 1.4 cable - 1.80 m • 1 x USB-C to C 10Gbps, 100W cable -1.00 m • 1 x USB Type-C to Type-A 5Gbps cable - 1.80 m • QR Card • Safety Information • Cable Tie

¹ Off Mode, Standby Mode and On Mode as base on the ErP Lot 5 (EU 2019/2021 and EU 2019/2013) declared values which has been aligned with Regulatory.

Steadfast reliability

As the No. 1 monitor company worldwide*, we take pride in our unyielding commitment to quality and the utmost in customer satisfaction.

Premium Panel Exchange

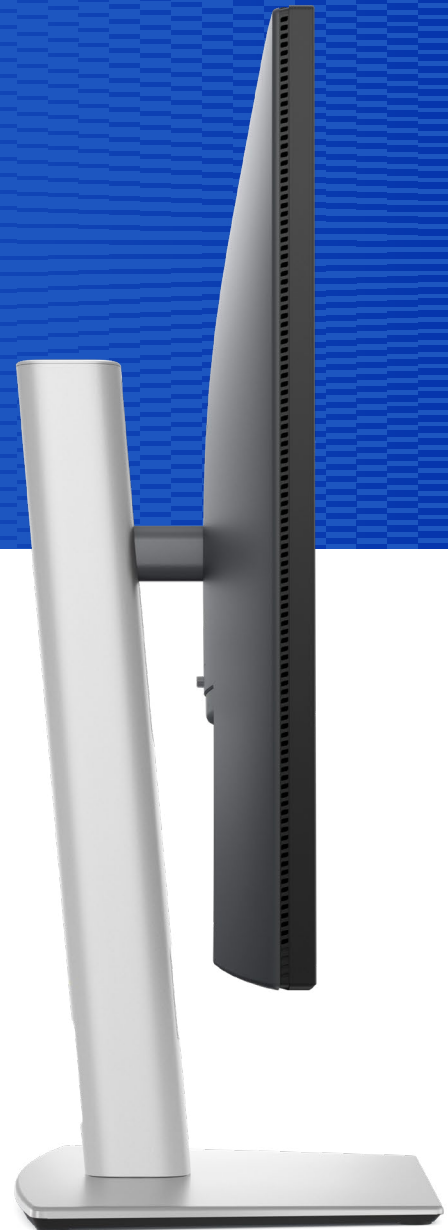
Dell Premium Panel Exchange¹ allows a free monitor replacement during the Limited Hardware Warranty² period even if only one bright pixel is found.

Advanced Exchange Service

This monitor comes with a 3-year Advanced Exchange Service³ so that if a replacement becomes necessary, it will be shipped to you the next business day during your 3-year Limited Hardware Warranty.²

ProSupport

Upgrade to 24x7 specialized technical phone support with the Dell ProSupport option.⁴



* Dell monitors are #1 Worldwide for 10 years! Source: IDC Worldwide Quarterly PC Monitor Tracker, Q3 2024. From 2014 to 2024.

¹ Applicable to Dell UltraSharp and Dell Pro Plus desktop monitors.

² For copy of Ltd Hardware Warranty, write to Dell USA LP, Attn: Warranties, One Dell Way, Round Rock, TX 78682 or see <https://www.dell.com/warranty>.

³ Advanced Exchange: Dell will send you a replacement monitor the next business day in most cases, if deemed necessary after phone/online diagnosis. Shipping times may vary by location and for monitors 55" and above. Fee charged for failure to return defective unit. See [dell.com/servicecontracts/global](https://www.dell.com/servicecontracts/global).

⁴ Availability varies, please visit www.dell.com/support for details. In some countries, hours for in-region support may vary. Support after local business hours may be provided in a language other than the local language.

Technical specifications subject to change without prior notice. Product availability varies by country. Please contact your Dell representative for more information.

© 2025 Dell Inc. or its subsidiaries. All Rights Reserved. Dell Technologies, Dell, EMC, Dell EMC and other trademarks are trademarks of Dell Inc. or its subsidiaries. Other trademarks may be trademarks of their respective owners. USB Type-C® and USB-C® are registered trademarks of USB Implementers Forum. Thunderbolt and the Thunderbolt logo are trademarks of Intel Corporation in the U.S. and/or other countries.