

ThinkCentre M75q GEN 2

At Lenovo, we design real solutions for real people who work, innovate, and excel in a variety of industries and settings. It's one of the reasons we pioneered the first 1L Tiny desktop and space-saving Tiny-in-One (TIO) years ago. And it's why we continue to design even more powerful devices that blend seamlessly into today's shifting and shrinking workspaces.

The newest ThinkCentre M75q Gen 2 makes big ideas possible. It features an AMD Ryzen™ 7 4750GE desktop processor with PRO technologies, which delivers enterprise-class, energy-efficient performance in a PC so small it can fit—or hide—almost anywhere. Bundled with TIO, ThinkCentre M75q Gen 2 offers even greater value and more cost-effective upgrade options. From corporate offices to retail salesfloors, healthcare to hospitality settings, ThinkCentre M75q Gen 2 combines everything users want with the security and manageability businesses need.



Smarter
technology
for all

Lenovo

ThinkCentre M75q GEN 2



FULL-SIZE PERFORMANCE

This Tiny desktop brings high performance thanks to an AMD Ryzen™ 7 4750GE desktop processor with PRO technologies that is designed to multitask, create content, or crunch data. ThinkCentre M75q Gen 2 also features up to two DDR4 SODIMM (2933MHz) and dual punch-outs that allow users to configure it to meet their needs.



SECURITY INSIDE AND OUT

ThinkCentre M75q Gen 2 allows your employees to innovate fearlessly with the reinforced security of ThinkShield, the most comprehensive, end-to-end security solution on the market that combines industry-leading hardware, software, services, and processes to protect your ideas and your business. In addition to built-in ThinkShield features, there are many more options that can be customized to meet your needs. ThinkCentre M75q Gen 2 also comes with AMD Memory Guard, which provides full memory encryption to help protect sensitive data at rest and in transit. A Kensington™ Cable Lock slot prevents physical data and device theft.



EASY EXPANDABILITY

ThinkCentre M75q Gen 2 is designed to grow with your business. From industry-specific equipment to legacy peripherals, this desktop can connect them all.



COMPREHENSIVE MANAGEABILITY

ThinkCentre M75q Gen 2 is easy to deploy, upgrade, and manage thanks to built-in driver support for older OS versions. Toolless access to the SSD and memory module make expansion and maintenance fast and efficient. In addition, AMD PRO manageability features enable IT professionals to easily and confidently administer PC fleets within your organization.



ENHANCED USER EXPERIENCE

ThinkCentre M75q Gen 2 is designed with people—and shrinking workspaces—in mind. Its sleek, modern design and compact 1L form allow this Tiny PC to fit seamlessly into modern offices, healthcare, finance, or retail environments either sitting out, mounted out of the way, or bundled with Tiny-in-One (TIO). Users can connect ThinkCentre M75q Gen 2 to as many as three displays for maximum multitasking, while a USB-C port located on the front panel offers fast charging and quick data sharing.



purposeful design

ThinkCentre M75q Gen 2 enhances user experience with practical features like Smart Power On, which turns on the desktop using a simple keyboard shortcut. This is especially useful when the PC—and its power button—are bundled inside TIO.

relentless innovation

We are inspired by our customers and what they want from our devices. It shows in the variety of mounting options we offer for ThinkCentre M75q Gen 2 and the added value of bundling it with TIO. This allows businesses to upgrade monitors and PCs separately to save budget and offers users a more clutter-free, space-saving design.

trusted quality

Lenovo's dedication to constantly improving product quality means rigorous testing for durability and reliability, which results in our products achieving one million hours mean time between failure. In addition to our extensive in-house testing for real-world challenges, ThinkCentre M75q Gen 2 is tested against MIL-STD methods and procedures.



ThinkCentre M75q GEN 2

AMD
RYZEN
PRO

performance

PROCESSOR

Up to AMD Ryzen™ 7 4750GE desktop processor with PRO technologies

OPERATING SYSTEM

Up to Windows 10 Pro 64 bit

MEMORY

2 DDR4 SODIMM 3200MHz (64GB max support)

PSU

90W 89%

65W 89%

security

TPM 2.0 chip

BIOS-based Smart USB Protection

AMD Memory Guard

Kensington™ Cable Lock

connectivity

FRONT PORTS

1x USB 3.2 Gen 2

1x USB 3.2 Gen 1 Type-C

1x Combo

REAR PORTS

2x USB 3.2 Gen 1 (SuperSpeed USB 5Gbps)

2x USB 2.0

1x DP + 1x HDMI

2x Punch Out (serial/DP/HDMI/Type-C/VGA+serial port/2x USB 3.2/2x DP1.2)

1x LAN

EXPANSION SLOT

1x M.2 2280/2242

1x M.2 2230 for WiFi

INTERNAL BAY

1x 2.5" HDD

EXTERNAL BAY

Optional ODD box

wifi

WiFi 6 (WLAN 802.11 AX)

design

EOU

Yes

DIMENSIONS

179 x 36.5 x 182.9 mm

WEIGHT

1.32kg/2.91lbs

MIL-SPEC

Yes, 10 items

manageability

3 Independent Monitors

Smart Power On

green certifications

Energy Star® 8.0

EPEAT™ Gold

RoHS

ERP LOT3

TÜV Low Noise Certification

TCO 8.0

optional services

PREMIER SUPPORT

Bypass phone menus and scripted troubleshooting to access advanced-level technicians with the expertise needed to quickly diagnose and solve problems. Get a consistent point of contact within Lenovo to ensure that your case resolution is professionally managed from start to finish.^{1,2}

WARRANTY UPGRADES

Onsite Service maximizes PC uptime and productivity by providing convenient, fast repair service at your place. In addition, with Tech Install CRU service the installation of all internal Customer Replaceable Unit (CRU) parts will be done on your behalf by a trained technician.¹

WARRANTY EXTENSION

This fixed-term, fixed-cost service helps you accurately budget for PC expenses, protect your investment, and lower the cost of ownership over time.¹

ACCIDENTAL DAMAGE PROTECTION (ADP)

Protect your investment from operational or structural damage caused by common accidents like drops, spills, or electrical surges. This protection plan helps with predictable budgeting, minimizes unexpected repair costs and provides significant savings relative to the cost of non-covered repairs.^{1,2}

KEEP YOUR DRIVE

Retain your drive if it should happen to fail, giving you the peace of mind of knowing that your valuable data is secure.^{1,2}

¹Up to 5 years total duration

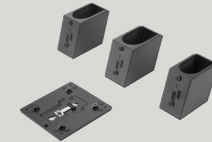
²May not be available in all regions

accessories



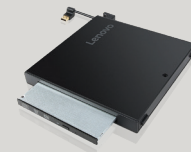
THINKCENTRE TINY VESA MOUNT II

The ThinkCentre Tiny VESA Mount II is uniquely designed to house the Tiny PC. This versatile mount device can be used separately or combined with other options for a secure mounting functionality.



THINKCENTRE TINY MONITOR CLAMP II

The ThinkCentre Tiny Monitor Clamp II allows you to customize your workspace with two flexible mounting options that secure your ThinkCentre Tiny onto selected ThinkVision T/P monitors.



THINKCENTRE TINY IV DVD BURNER KIT

ThinkCentre Tiny IV DVD Burner Box provides excellent read/write capabilities using SATA interfaces for speedy execution. You just need to connect it to ThinkCentre Tiny via USB-A and then enjoy crisp, clear DVD play back and reliable DVD recording.

©2020 Lenovo. All rights reserved. These products are available while supplies last. Prices shown are subject to change without notice. For any questions concerning price, please contact your Lenovo Account Executive. Lenovo is not responsible for photographic or typographic errors. Warranty: For a copy of applicable warranties, write to: Warranty Information, 500 Park Offices Drive, RTP, NC 27709, Attn: Dept. ZPYA/B600. Lenovo makes no representation or warranty regarding third-party products or services. Trademarks: Lenovo, the Lenovo logo, Rescue and Recovery, ThinkPad, ThinkCentre, ThinkStation, ThinkVantage, and ThinkVision are trademarks or registered trademarks of Lenovo. Microsoft, Windows, and Vista are registered trademarks of Microsoft Corporation. ©2020 Advanced Micro Devices, Inc. All rights reserved. AMD, Radeon, Ryzen and combinations thereof are trademarks of Advanced Micro Devices, Inc. Other company, product and service names may be trademarks or service marks of others.

Lenovo