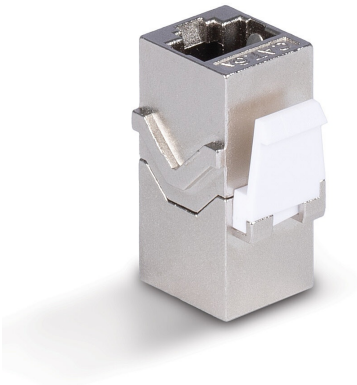


CAT 6A Coupler Female to Female

Part No.: 60188



Description

- Coupler which connects two Network Cables cables together for extended distances
- Installs easily between two Network Cables
- Supports Speeds up to 500Mhz
- Gold plated connectors and contacts
- 2 year warranty

The Lindy CAT 6A Coupler is a compact solution for connecting two Network cables together for extended distances. Simply connect your RJ45 ethernet cables to either side and you are ready to go.

Technical details

Connectors

- Connector A: RJ45 Female
- Connector B: Rj45 Female
- Housing Material: Zinc Alloy
- Connector Plating: Nickel Plated
- Pin Construction: Phosphor Bronze
- Pin Plating: Gold Plated
- Dimensions (approx.) WxDxH: 33 x 15 x 15mm (1.29 x 0.59 x 0.59in)

Specifications

- Supported Bandwidth: 500Mhz
- Maximum Resolution: -
- Nominal Attenuation: -
- Minimum Bend Radius: -
- Operating Temperature: -10°C - 50°C (14°F - 122°F)
- Storage Temperature: 0°C - 40°C (32°F - 104°F)

Miscellaneous

- Packaging Type: Polybag
- Warranty (Years): 2
- Product Compliance: RoHS, REACH, UKCA

Purchasing Information

- No.: 60188
- EAN: 4002888601887

© LINDY 2024