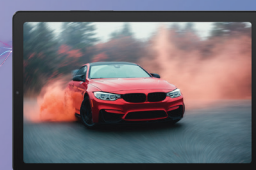
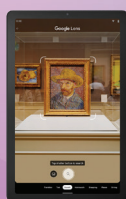
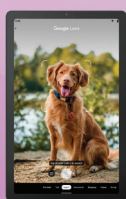


Lenovo  
Tab M9

Smarter  
technology  
for all

Lenovo

# Chill in style.



[WWW.LENOVO.COM](http://WWW.LENOVO.COM)

# Lenovo Tab M9

## Specifications

### Design

#### Dimension



#### Weight (for tablet only)

-344 g (0.76 lbs)

#### Operating System at Launch

Android™ 12

#### Display

Size	: 9"
Screen	: LCD
Resolution	: 1340 x 800
PPI	: 176
Color Gamut	: 60% NTSC
Brightness	: Up to 400 nits (Typical)
Screen-to-display Ratio	: 81.2%



#### Colors

Arctic Grey  
Frost Blue



#### Card Slots

Type : Single Card Slot  
Slots : TF (WiFi only) / Nano + TF (LTE)



#### Integrated Camera

**Rear**  
8MP AF with  
86.2° Angle of view  
**Front**  
2MP FF with  
73° Angle of View



#### Sensors

Accelerometer (G) Sensor,  
Ambient L-Sensor, Hall Sensor,  
Battery Manager IC, Vibrator,  
Coulomb Counter, T-Hub IC

#### Login Security

Fingerprint : NA, Face Unlock : Yes

#### Buttons and Ports

USB Type-C™ 2.0, 3.5 mm Audio Jack

### Performance

#### Processor

MediaTek® G80  
Octa Core, 2 x A75 2.0 GHz + 6 x A55 1.8 GHz

#### Audio

Dual Speakers Optimized with Dolby Atmos®;  
Single Microphone

#### Memory (LPDDR4X + EMMC5.1)

RAM + ROM : 3 GB + 32 GB, 4 GB + 64 GB,  
Card Slot : With Expandable SD Card Support  
(exFAT Up to 2 TB,  
FAT32 Up to 128 GB)

#### Battery (for ROW SKU)<sup>1</sup>

Type : Li-ion Polymer  
Capacity : 5100 mAh (Typical)  
Video Playback : Up to 13 Hours  
Web Browsing : Up to 12 Hours  
Music Playback : Up to 15 Hours



### Connectivity

#### Wireless Connectivity

WLAN : 802.11 a/b/g/n/ac,  
2.4 GHz & 5 GHz,  
WiFi Band 2.4G/5G



Bluetooth® : 5.1  
WiFi Direct : Yes  
WiFi Display : Yes  
GPS/GLONASS/  
GALILEO : Yes  
AGPS : Yes<sup>2</sup>

#### Bands Supported

GSM : B2/B3/B5/B8  
UMTS : B1/B2/B4/B5(B6/B19)/B8  
FDD LTE : B1/B2/B3/B4/B5(B19)/B7/B8/  
B18/B20/B26/B28(a+b)/B66  
TDD LTE : B38/B40/B41 Full Band

### Software

#### Preloaded Software<sup>3</sup>

• Google Kids Space <sup>4</sup>	• YouTube Kids	• Message
• Netflix	• Google	• Google One
• Entertainment Space	• Chrome	• Podcasts
• Play	• Gmail	• Docs
• Files	• Maps	• Sheets
• Google TV	• Drive	• Camera Go
• YouTube	• Duo	• Recorder
	• Photos	• Tablet Center

<sup>1</sup> All battery life claims are approximate and based on internal testing under optimal laboratory and network conditions. Actual battery performance will vary and depend on numerous factors including product configuration and usage, software, operating conditions, wireless functionality, power management settings, screen brightness and other factors. The maximum capacity of the battery will naturally decrease with time and usage.

<sup>2</sup> LTE version only.

<sup>3</sup> Actual application availability varies by country.

<sup>4</sup> Books and video content not available in all regions. Video content subject to availability of YouTube Kids app. Books content requires the Play Books app. Availability of apps, books, and video content may change without notice. Google Assistant not available in Google Kids Space. Google Kids Space requires a Google Account for your child. Parental controls require the Family Link app on a supported Android, Chromebook, or iOS device.

## What's in the Box

- 1 x Lenovo Tab M9
- 1 x USB Type-C 2.0 Charging Cable (1m)
- 1 x 5V/2A Charging Adapter
- 1 x Quick Start Guide & Safety, Warranty
- 1 x SIM Tray Pin



## Accessories



Lenovo Tab M9  
Folio Case

## Recommended Lenovo Services

**Lenovo Accidental Damage Protection One**  
Avoid the hassles of unexpected damage & repair costs. With coverage for drops, spills, electric surges, and broken LCD screens, accidental damage protection makes it easy to repair your Tablets, permitting a single repair during the coverage period.

#### Lenovo Premium Care

Premium Care is a hassle-free solution for all your technical support needs. Upgrade your Lenovo Tablet's standard warranty to our front-of-the-queue

customer support service and get 24/7 real-person support via phone, chat, or email from experts who provide solutions on your first contact.

#### Lenovo Premium Care Plus

Enjoy extra care, comfort, and peace-of-mind with Lenovo Premium Care Plus – a comprehensive support solution with personalized hardware and software support from experts and accidental damage coverage, with you as our priority 24/7.

Want More?

Lenovo Tab M10



WWW.LENOVO.COM



Lenovo reserves the right to alter product offerings and specifications at any time, without notice. Lenovo makes every effort to ensure accuracy of all information but is not liable or responsible for any editorial, photographic or typographic errors. All images are for illustration purposes only. For full Lenovo product, service and warranty specifications visit [www.lenovo.com](http://www.lenovo.com). Lenovo makes no representations or warranties regarding third party products or services. **Trademarks:** The following are trademarks or registered trademarks of Lenovo: Lenovo, the Lenovo logo, Yoga, Google, Android, Google Lens, and Google Kids Space are trademarks of Google LLC. Ultrabook, Celeron, Celeron Inside, Core Inside, Intel, Intel Logo, Intel Atom, Intel Atom Inside, Intel Core, Intel Inside, Intel Inside Logo, Intel vPro, Itanium, Itanium Inside, Pentium, Pentium Inside, vPro Inside, Xeon, Xeon Phi and Xeon Inside are trademarks of Intel Corporation in the U.S. and/or other countries. WiFi 6 is a trademark of WiFi Alliance. HDR10+ is a trademark of HDR10+ Technologies, LLC. MyScript and Nebo are trademarks of the company MyScript, registered in France, the United States of America and other countries. Other company, product and service names may be trademarks or service marks of others. Battery life (and recharge times) will vary based on many factors including system settings and usage. ©2022 Lenovo. All rights reserved.

Lenovo