

EMMA

In a world where complexity grows by the day, EMMA offers clarity and simplicity.

Designed by WIANCO OTT Robotics, EMMA is a cognitive AI automation assistant that allows teams to automate digital tasks across systems and departments — without programming knowledge or platform limitations. Whether you work in finance, logistics, public administration, retail... EMMA integrates where needed and acts exactly as instructed — all without a single line of code.

It's about results your team can build on.

What EMMA brings to your team



Reliable execution

Every action follows a defined path, ensuring consistency.

Familiar logic, digitized: If a person can follow the process, EMMA can too — across applications.



Fast learning curve:

After two days of training, your team can start automating with confidence.

Flexible setup: EMMA adapts to your digital environment — no need to replace what works.



Clear accountability:

With transparent paths and team-based controls, EMMA keeps your work traceable.

Who benefits from EMMA?



Business users

no technical background needed



Operation teams

working across multiple tools and systems



IT departments

looking to offload repetitive digital tasks



Organizations

focusing on fast digital transformation and scaling



Public & Enterprise

institutions with strict compliance needs



Image source: Verena Schäfer

"EMMA now saves us 12 hours of work and 21,000 clicks per day!"

— Dr. Philipp Hoffmann, pharmacist and owner of Hoffmann Pharmacies (Germany)

What is EMMA and how does it work?

1. Perception

Sees & recognizes all elements on the desktop: icons, files, buttons, menus...

2. Reading

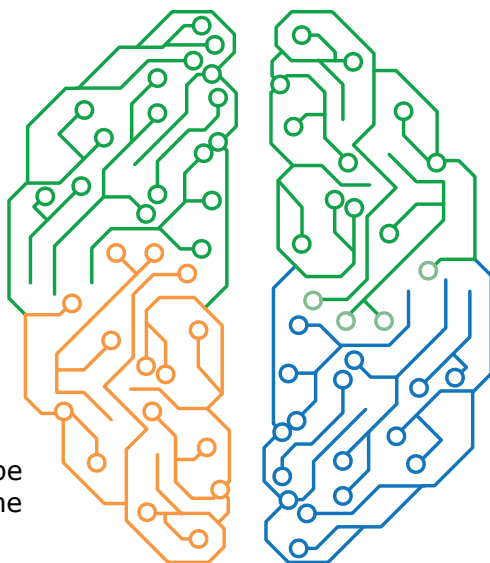
Reads what is shown on the desktop: data, texts, numbers...

3. Understanding

Decides what should be done next based on the displayed information (Business Rules).

4. Acting

Clicking, scrolling, typing, waiting...



EMMA stands for Empowering Minds. Mastering Automation.

Imagine being able to teach software just like you'd teach a colleague. EMMA learns how to execute tasks by seeing, reading, and interacting with your desktop applications, documents, and workflows — just like a human assistant would.

EMMA observes interface elements, understands logic through rules, and performs actions such as clicking, typing, reading or scrolling — 100% interface-free. No APIs or integrations required.

"If you can explain a process to a colleague, you can automate it with EMMA."



Technical + Strategic Differentiators: How EMMA supports everyday work

Feature

Why it matters

Scalable by design

Standardization and centralized management

No-code interface

Empowers users at all levels

Seamless system integration

Works with both old and new tools — no integration needed

Transparent execution

Every step is trackable and audit-compliant

24/7 availability

Runs tasks with or without human supervision

API-free automation

Interacts with any software without extra development

Structured logic flow

Follows a predictable path defined by your team

Role-based control

Keeps your organization in command of what EMMA does

Smart data recognition

Understands what it sees and acts accordingly

