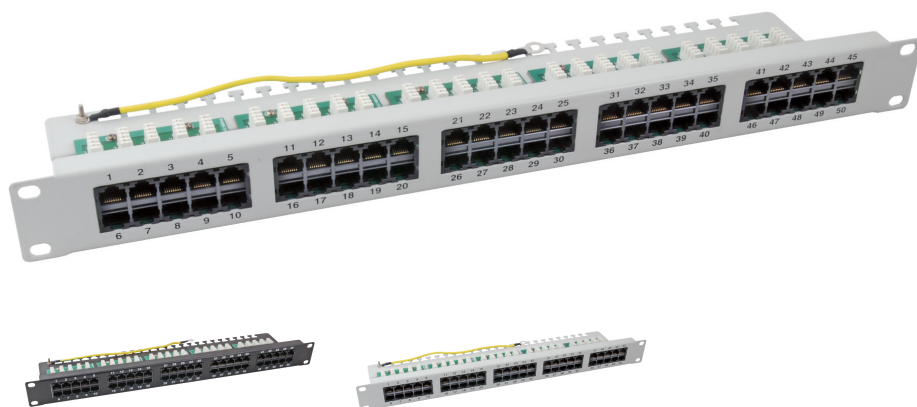


DATASHEET

Patch Panel 50x RJ45 8/4 1U ISDN, RAL9005, Cat.3



General data

1U, Category 3
 Unshielded RJ45 8(4) jacks
 4-pole LSA IDC terminals
 Assignment: 3-6/4-5
 High packing density
 Strain relief via cable ties

Allgemeine Daten

Type of connector	RJ45 8(4)
Mounting method	482.6 mm (19 inch) mounting
Number of height units	1 U
Category	3
Connection type	LSA
Suitable for number of connectors	50

Abmessungen

Width	482.6 mm
Height	44.45 mm

Elektrische Eigenschaften

screened	False
----------	-------

Available variants

ArtNr.	Bezeichnung	Colour	Number of buses/couplings	RAL-number
37595.2	Patch Panel 50 x RJ45 8/4 1U ISDN, RAL7035, Cat. 3	grey	50	7035

This datasheet was created automatically on 10-07-2023 . Technical changes reserved.



DATASHEET

Patch Panel 50x RJ45 8/4 1U ISDN, RAL9005, Cat.3

37595SW.2	Patch Panel 50x RJ45 8/4 1U ISDN, RAL9005, Cat.3	black	50	9005
-----------	--	-------	----	------

This datasheet was created automatically on 10-07-2023 . Technical changes reserved.



EFB-Elektronik GmbH
Striegauer Straße 1
33719 Bielefeld

fon: +49 521 40 41 8-0
fax: +49 521 40 41 8-50

info@efb-elektronik.de
www.efb-elektronik.de

WIR SORGEN FÜR VERBINDUNG
WE CARE FOR CONNECTION

