

2x Fans. 2x Fun.

ASUS Innovations

- **OC mode:** Up to 2715 MHz (Boost Clock)/up to 2300 MHz (Game Clock)
- **Default mode:** Up to 2695 MHz (Boost Clock)/up to 2280 MHz (Game Clock)
- **Axial-tech Fan Design** features a smaller fan hub that facilitates longer blades and a barrier ring that increases downward air pressure.
- **Dual ball fan bearings** last up to twice as long as conventional designs.
- **Auto-Extreme Technology** uses automation to enhance reliability.
- A **protective backplate** prevents PCB flex and trace damage.



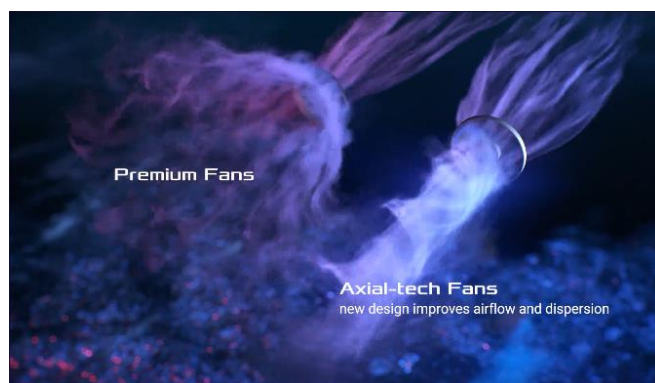
Dual Ball Fan Bearings

Different bearing types have unique pros and cons. Ball bearings excel at durability and can last up to twice as long as sleeve bearing designs.



Axial-tech Fan Design

Two tried-and-true Axial-tech fans feature a smaller hub that facilitates longer blades and a barrier ring to increase downward air pressure.



Protective Backplate

The PCB is reinforced by an aluminum backplate that adds structural rigidity, helping to prevent flex and protect components and trace pathways from damage.



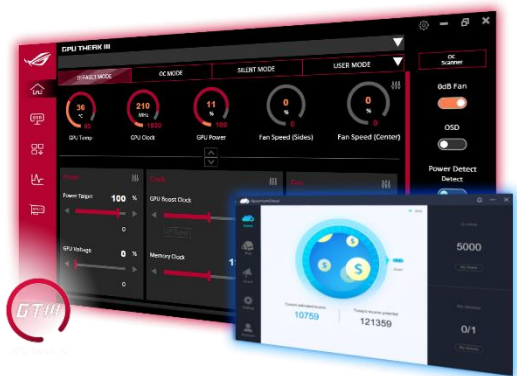
Stainless Steel Bracket

The mounting bracket of the Dual has been beefed up with 304 Stainless Steel that's harder and more resistant to corrosion.



Software Suite

Hardware and software come together to let you fully customize your experience and get the most out of your graphics card. GPU Tweak III allows for hardware tweaking and monitoring, and QuantumCloud utilizes your spare GPU computing power to generate passive income.



ASUS Features

OC
Edition

OC edition

Up to **2715 MHz** GPU boost clock and 18 Gbps memory speed in OC mode for outstanding gaming experience.



8GB GDDR6 Memory

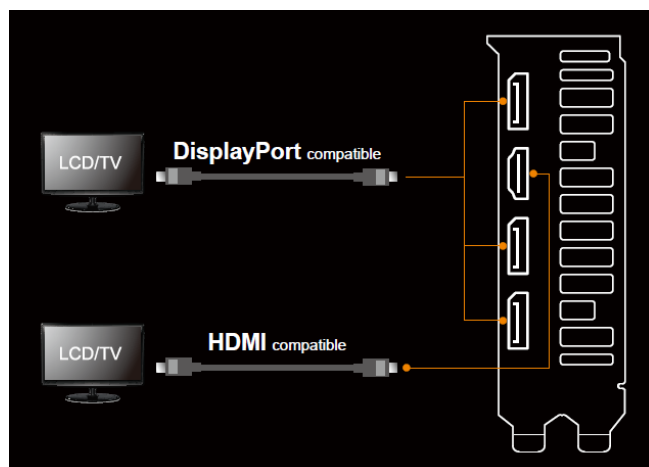
On-board memory for the best gaming experience & the best resolution.

0dB
FAN
Silent Gaming

0dB Technology

Fans come to a standstill when the GPU temperature is under 55 Celsius, helping to reduce noise during light loads.

I/O Specifications



AMD Features

AMD
RDNA 3

AMD RDNA™ 3 Architecture with Hardware Raytracing

The AMD RDNA™ 3 architecture features industry-advancing technology to deliver next-generation performance, visuals, and power efficiency. Discover new levels of performance with unified AMD RDNA™ 3 compute units, featuring redesigned raytracing accelerators for incredible performance while improving image quality.

AMD
FidelityFX

AMD FidelityFX™ Super Resolution Technology

AMD FidelityFX™ Super Resolution technology, or FSR, uses cutting-edge super-optimized spatial upscaling technology to generate super high-quality edges and distinctive pixel detail. With FSR, turn on the latest features and settings in your games while maintaining an acceptable framerate.

AMD
RADEON
Anti-Lag

Radeon™ Anti-Lag

AMD Radeon™ Anti-Lag reduces latency, providing ultra-fast response time giving you a dynamic edge over your competition. Less lag equals more wins.

AMD
FreeSync

AMD FreeSync™ Technology

Take full advantage of the AMD Radeon™ RX 7000 Series graphics cards by pairing with a certified AMD FreeSync™ technology-enabled monitor to enable an exceptional stutter and tear-free gaming experience with high refresh rates, low latency, and stunning HDR.

Radeon™ Boost

AMD Radeon™ Boost optimizes fast motion during gameplay to deliver extra performance and increased responsiveness when it matters most.

AMD Smart Technologies

Exclusive to AMD platforms, Smart Technologies enhance system performance by leveraging the synergies of AMD's CPUs and GPUs to help accelerate the overall platform performance.

Specifications

Model Name	DUAL-RX7600-O8G-EVO
Graphics Engine	AMD Radeon™ RX 7600
Stream Processors	2048
OpenGL®	OpenGL® 4.6
Engine Clock	OC mode: up to 2715 MHz (Boost Clock)/up to 2300 MHz (Game Clock) Default mode: up to 2695 MHz (Boost Clock)/up to 2280 MHz (Game Clock)
Memory Interface	128-bit
Video Memory	8GB GDDR6
Memory Speed	18 Gbps
Power Connector	1 x 8-pin
I/O	1 x Native HDMI 2.1 3 x Native DisplayPort 1.4a
HDCP Compliant	HDCP 2.3
Digital Max. Resolution	7680 x 4320
Maximum Display Support	4
Crossfire Support	No
Recommended PSU	550W
Bus Standard	PCIe 4.0
Package Contents	1 x Speedsetup Manual
Software Bundled	ASUS GPU Tweak III & Driver, please download all software from the support site.
Slot	2.5 slot
Dimension	
Card Size (mm/inch)	229.1 x 123.24 x 49.6 mm 9.02 x 4.85 x 1.96 inch
Color Box (mm)	364 x 217 x 66 mm
Weight	
Single Card (KG)	0.703 KG
Product Weight (with packing) (KG)	1.161 KG

<p>Note</p>	<p>* Our wattage recommendation is based on a fully overclocked GPU and CPU system configuration. For a more tailored suggestion, please use the “Choose By Wattage” feature on our PSU product page: https://rog.asus.com/event/PSU/ASUS-Power-Supply-Units/index.html</p> <p>* All specifications are subject to change without notice. Please check with your supplier for exact offers. Products may not be available in all markets. If you do not use the latest and current specifications of ASUS products, you shall be liable for all loss and damage claimed by third party to ASUS based on false advertising or any other issues caused from using false specifications of ASUS products.</p> <p>* Crossfire Support for DirecX[®] 12 and Vulkan[®]</p> <p>* ‘Game Clock’ is the expected GPU clock when running typical gaming applications, set to typical TGP (Total Graphics Power). Actual individual game clock results may vary.</p> <p>* ‘Boost Clock’ is the maximum frequency achievable on the GPU running a bursty workload. Boost clock achievability, frequency, and sustainability will vary based on several factors, including but not limited to: thermal conditions and variation in applications and workloads.</p>
<p>Regulation</p>	<p>■S-AT2-001 GreenASUS Hazardous Substances Free(HSF) Technical Standard(Global RoHs,China RoHS,EU REACH,J-MOSS)</p> <p>■WEEE</p>
<p>Certifications</p>	<p>■ FCC ■ CE ■ C-TICK ■ BSMI ■ KCC ■ VCCI</p>

