



A simple way to be part of the circular economy

We've all got an important role to play in minimising our impact on the environment. Thanks to the Lexmark Cartridge Collection Programme (LCCP), being responsible doesn't have to be difficult or compromise business performance. LCCP combines high-performance logistics and service with innovative tools to offer you a collection, recycle and reuse process that's modern, efficient and ideally adapted to your consumption volumes.

Our extensive cartridge collection network has made Lexmark an industry leader in the recovery, remanufacturing and recycling of used toner cartridges.

A programme that works

LCCP is a genuine action-based programme that yields solid, quantifiable results. And because it's free of charge to our customers, it allows everyone to be part of the positive change.

With your help, here's what we've been accomplishing...

- ▶ Last year alone, Lexmark customers **returned up to 50%** of the total toner cartridges shipped to them
- ▶ Since 1996, Lexmark has reused over **23 million kg** of recovered cartridge materials by converting millions of used toner cartridges into Lexmark-certified reconditioned toner cartridges
- ▶ Last year, approximately **36% of the cartridge materials** by weight returned to Lexmark were reused. Our goal is to reach **50% by 2018**
- ▶ Thanks to LCCP, our cartridges contain up to **28% recycled plastic content (PCR)**
- ▶ LCCP is currently available in over **60 countries**, covering **90% of our global market**

Why participate?

- ▶ Responsible
- ▶ Sustainable
- ▶ Easy and convenient

Lexmark Corporate Cartridges—an exclusive line for partners like you!

Guided by the principles of zero waste and the circular economy, Lexmark reuses most of the empty cartridges returned to make Lexmark Corporate Cartridges, a special line of cartridges for our partners and customers. So while you help to save thousands of tonnes of material from landfill each year, you can benefit from these reliable eco-designed cartridges, powered by Unison Toner and **manufactured in the EU.**



* Source: csr.lexmark.com/return-recycle.html

Home and small offices

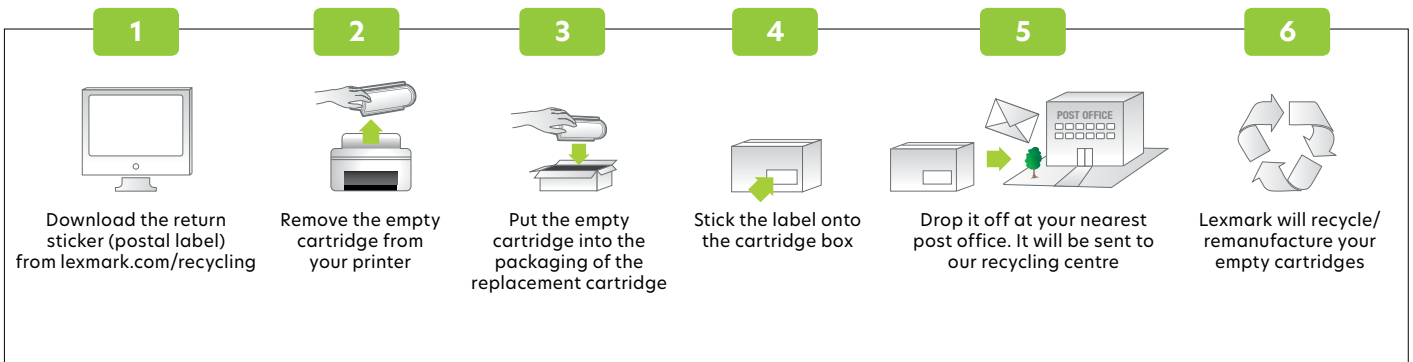
Small businesses can make a BIG difference.

No company is too small to be concerned with today's pressing environmental issues. Even if your printing activities are modest and you're consuming **fewer than 10 cartridges** per year, you can take part in LCCP thanks to Lexmark's convenient prepaid postal labels.



Postal label

With the convenient prepaid Lexmark postal labels, simply download and print out a return label free of charge. Then, stick the label onto the cartridge box and drop it off at your nearest post office. It will be sent to our recycling centre.



For fusers and imaging kits, an email should be sent to fuserreturns@kuehne-nagel.com

Medium-size businesses

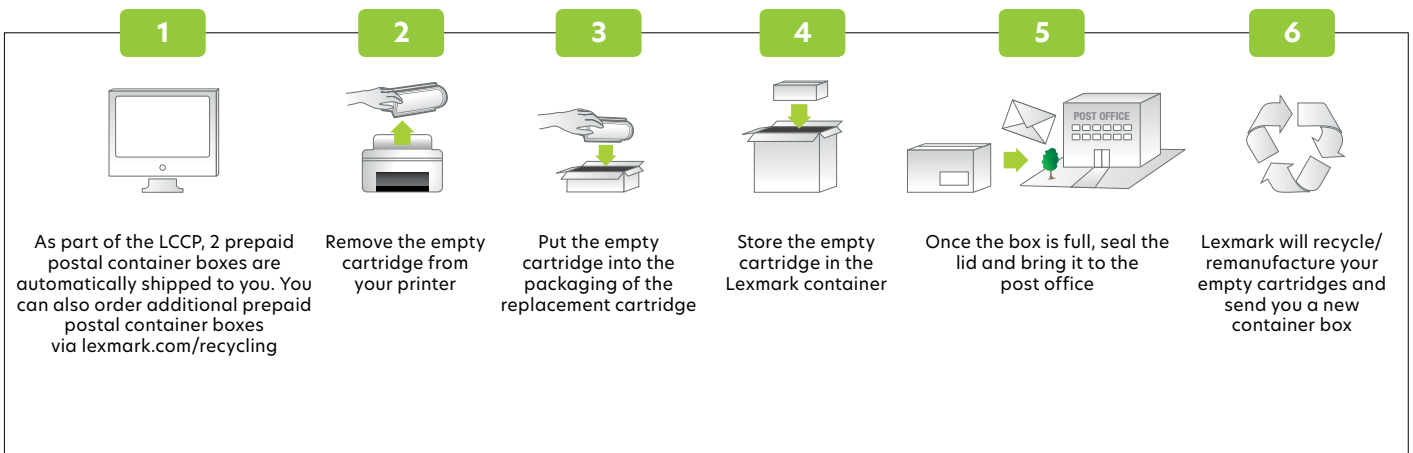
Thinking inside the box.

If you're using **between 10 and 40 cartridges** per year, then your consumption represents a major eco opportunity. To offer a practical solution for mid-size volumes like yours, we've designed a new Ecobox, which makes returning cartridges a breeze.



Postal container box (Ecobox)

Lexmark's postal container box is perfect for sending us back several empty cartridges at once. You can order your postage-paid box easily online and we'll get it to you within five days. Once it's full, just drop it off at the nearest post office and it'll be sent to our recycling centre, and your eco report will be updated accordingly.



Large organisations

High expectations for high volumes.

If you're using **40 or more cartridges** per year, your sustainability potential is enormous. Depending on your needs, we'll drop off the right-size containers or pallets directly at your front door and pick them up when they're full. We take care of everything so you can stay focused on your business.

IMPORTANT: You can also return Lexmark spare parts. Please put a MIX of spare parts and cartridges inside the container box. In case a container is too full and/or heavy, it is better to use several containers.

Lexmark accepts spare parts from the following printer models:

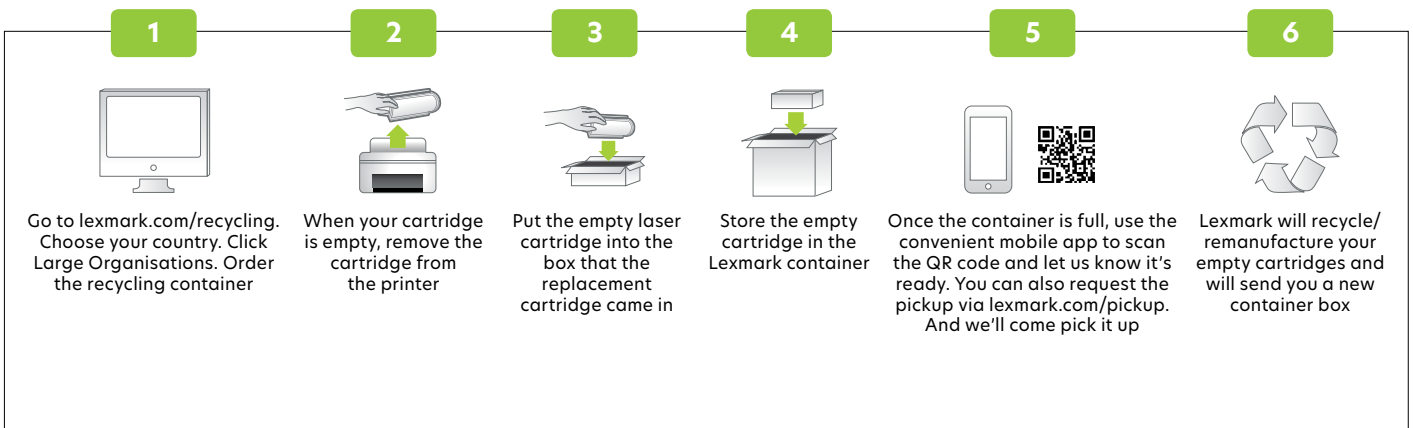
C54x - C74x - C78/9x - C92x - CS31x - CS72x - CS82x - E36x - MS71x - MS81x - MX61x - T62/3/4/5x - W84x - X56x - X64x - X85x - X94/5x

Annual consumption



Containers programme

Select and order the appropriate container size for your business: either a normal-size container or a large pallet container for very heavy volumes. We'll deliver it straight to your door for free within seven days. When it's full, use the convenient mobile app to scan the QR code and let us know it's ready. We'll come and pick it up.

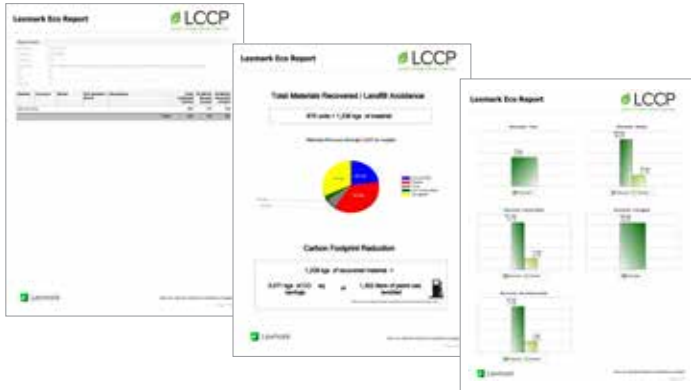


Get started today!

Whatever the size of your company, we've got a Lexmark Cartridge Collection Programme perfectly tailored to your needs.

Small Box (Ecobox)	Medium Box	Large Box	X-Large Box
<p>S 40 x 40 x 50cm 5 cartridges Weight limit: 15 kgs</p> <p>Only available in </p>	<p>M 40 x 40 x 83cm 10 cartridges Weight limit: 30 kgs</p>	<p>L 60 x 40 x 83cm 15 cartridges Weight limit: 30 kgs</p>	<p>XL 120 x 80 x 75cm 40 cartridges Weight limit: 100 kgs</p>

Quantifiable facts provided by eco reports



On an on-going basis, we'll supply you with eco reports, which let you measure and highlight your success. Through these insightful reports, you'll always be ready to respond to sustainability-related questions with solid numbers and facts, such as the number of cartridges returned, kg of material saved from landfill and your positive impact on carbon emissions. Indeed, when you recycle a cartridge with Lexmark, our lifecycle assessment shows that you can reduce its total carbon footprint by up to 50%.

Recognised as an industry leader

Year after year, Lexmark continues to be recognised as an industry leader for our sustainability initiatives and environmental programmes.

CR's 100 Best Corporate Citizens 2016

Lexmark was ranked 9th in Corporate Responsibility (CR) Magazine's annual listing. This is the fourth consecutive year that Lexmark has been selected for inclusion in this publication that recognises top performance of public companies in the U.S. Ratings are based on disclosure and performance data from publicly available information in Environment, Climate Change, Human Rights, Employee Relations, Corporate Governance, Philanthropy and Finance.

Global Compact 100

Lexmark is recognised in the top 100 companies in the United Nations Global Compact (UNGC) global stock index, which combines corporate sustainability and baseline financial performance.

Manufacturing Leadership 100 Awards

Lexmark received three awards in Sustainability Leadership, Supply Chain Leadership and Customer Value Leadership.



LCCP mobile app

Experience innovative recycling services for your eco responsible business. Download the LCCP mobile application to register and order a recycling container. Once full, scan the QR code and a logistics partner will come to pick up the container at your premises and bring it to our recycling facilities. Containers are usually delivered or picked up within a week.



LOOP INTO CIRCULAR ECONOMY

