

ergotron[®]

moving you forward

LX Pro Dual Arms

- **Flexible and Adaptable:** Accommodates different monitor sizes and configurations with various attachment options and accessory kits
- **Enhance Ergonomics:** Customizable positioning reduces strain and promotes better posture, with increased tilt range for stacked monitors
- **Modern Aesthetics:** Sleek design with improved cable management complements any workspace
- **Simple Installation:** Fewer parts, better cable management, and a detachable head make setup quick and easy
- **Maximize Desk Space:** A smaller base and compact profile free up workspace by lifting monitors off the desk
- **Boost Productivity:** Adjust monitor position easily with one-touch Constant Force™ lift technology for an optimal viewing experience that enhances focus and efficiency
- **High Durability:** Passes Ergotron's 10,000-cycle motion test

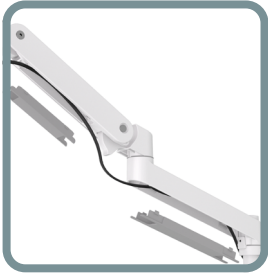


BUILT TO ADAPT. GUARANTEED TO LAST.



The LX line has been a trusted choice in ergonomic workspace solutions for over 20 years; recognized for its quality engineering, flexibility, and innovative Constant Force lift technology. The new LX Pro carries this legacy forward with a modern design, easier installation, and improved ergonomics. With added adaptability for a wide range of monitor setups, LX Pro continues Ergotron's commitment to solutions that evolve with changing workplace needs.

Essential Features



CONVENIENT CABLE COVER:
FASTER INSTALLATION AND SLEEKER LOOK



SMART TENSION INDICATOR:
SET TENSION LEVEL ONCE AND REPEAT FOR QUICK INSTALL OF MULTIPLE WORKSTATIONS



SAVE ROTATION STOP:
PREVENT DAMAGE TO WALLS, PARTITIONS, OR CUBICLES



EXTENSIVE TILT RANGE:
BETTER ERGONOMICS FOR USERS



DETACHABLE HEAD:
MAKES SET-UP AND MONITOR SWAPS A BREEZE

Maximize Adaptability with Accessories*



GROMMET MOUNT
#98-728



HANDLE KIT
*ONLY FOR DUAL DIRECT
#98-037



NOTEBOOK TRAY
#50-193-200



ADD AN ARM WITH THE DISPLAY ARM EXPANSION KIT
(DUAL TO TRIPLE OR QUAD) *ONLY FOR LARGE BASE
#98-734



DESK-TO-WALL CONVERSION
#98-730

*Available to purchase separately

LX Pro Dual Arms



LX Pro Dual Stacking



LX Pro Dual Direct



LX Pro Dual Side-By-Side

Standard Clamp Mount Part # (colour)	45-690-293 (Dark Grey) 45-690-292 (Matte Black) 45-690-290 (White)	45-684-293 (Dark Grey) 45-684-292 (Matte Black) 45-684-290 (White)	45-686-293 (Dark Grey) 45-686-292 (Matte Black) 45-686-290 (White)
Grommet Mount Part # (colour)	45-710-293 (Dark Grey) 45-710-292 (Matte Black) 45-710-290 (White)	Buildable from components	Buildable from components
Includes	(2) Arms, (2) extensions, (2) monitor pivots, grommet mount or 2-piece desk clamp, 30.4 cm pole, attachment hardware	Arm, extension, (2) monitor pivots, 2-piece desk clamp, 13.5 cm pole, dual bow, attachment hardware (grommet mount base sold separately)	(2) Arms, (2) extensions, (2) monitor pivots, 2-piece desk clamp, 13.5 cm pole, attachment hardware (grommet mount base sold separately)
Typical LCD Size	≤ 24"	≤ 27"	≤ 27"
<small>LCD SIZE IS APPROXIMATION. DIMENSION IS DIAGONAL MEASUREMENT OF SCREEN. LCD SIZE MAY BE EXCEEDED AS LONG AS SCREEN WEIGHT DOES NOT EXCEED MAXIMUM WEIGHT CAPACITY OF THE MOUNT.</small>			
Weight Capacity	Maximum individual LCD weight 1.8–10 kg per monitor Total weight capacity 20 kg	Maximum individual LCD weight 4.25 kg per monitor. Total weight capacity 8.5 kg	Maximum individual LCD weight 1.8–9 kg per monitor Total weight capacity 18.1 kg
Lift	33 cm		
Tilt	85° (+70° / -15°)	30° (+13° / -17°)	85° (+70° / -15°)
Monitor Pan	180°		
Base Arm Pan	360° (180° with rotation stop engaged)		180° (90° with rotation stop engaged)
Monitor Rotation	360°		
VESA	MIS-D, 100/75, C (100 x 100 mm & 75 x 75 mm hole pattern)		
Extension	≤ 65.6 cm	≤ 68.6 cm	≤ 65.6 cm
Shipping Weight	10.1 kg	7.3 kg	8.9 kg
Shipping Dimensions	58L x 47.3W x 16.4H cm	88.5L x 26W x 16.5H cm	69L x 34.4W x 16.4H cm
Warranty	10 years		
Pro Install Option	SRVC-SPI-1		

Download additional resources at ergotron.com.

For more information:

USA & Canada: 800.888.8458 / +1.651.681.7600 / customerservice@ergotron.com

EMEA: +31.33.45.45.600 / info.eu@ergotron.com

APAC: apaccustomerservice@ergotron.com

Custom: oemsales@ergotron.com

© Ergotron, Inc. 2111.2025

Content subject to change.

Ergotron devices are not intended to cure, treat, mitigate or prevent any disease.

Patent information available at www.ergotron.com/patents.

