



Purpose Built for Power Users



Precision 3490

Work anywhere with a small, powerful workstation.

An ultra-mobile workstation that is great for multi-tasking across collaboration, business, and office applications.

Intelligent performance

Intel Core Ultra processors, 15W or 28W, up to 16 cores with vPro Enterprise options featuring integrated Intel Arc graphics and AI Boost technology. Up to NVIDIA RTX 500 Ada Gen graphics.

Memory & Storage:
Up to 64GB of 5600 MT/s DDR5 memory for all processors Up to 2TB Gen4 M.2 SSD

Advanced thermal management,

with Dual Opposing Output (DOO) fan and User Selectable Thermal Tables

Spill-proof Pro2 keyboard with backlit option

4G LTE, 5G FirstNet Certified

WiFi 6E, 4G LTE, 5G LTE with FirstNet Certification, Bluetooth 5.3

Industry's most secure commercial PCs¹

Only Dell offers off-host BIOS verification and Indicators of Attack to reduce exposure to future threats. Secured Component Verification, offered only by Dell, helps ensure PCs are secure from factory to first boot. Dell and Intel reduce the attack surface. The latest Intel vPro-based PCs provide an estimated 70% attack surface reduction.²

Up to FHD HDR IR camera with AI-based proximity sensors, Manual Privacy Shutter, Fast sign-in intelligent noise microphone.

Reliability

ISV Certified
MIL STD tested
Long Lifecycle Battery options

FHD, 100% sRGB, 400nits,

Touch Panels Available
Premier Color,
ComfortView Plus,
Low-Blue-Light (LBL),
Super Low Power (SLP)
options available

Optional Finger Reader

integrated with power button
Windows Hello
capable

Titan Gray palm rest

Dell Optimizer for Precision

See Dell Optimizer page for more details

Large glass-like, multi-touch clickpad

Starting weight is 3.06lbs/ 1.39kg

Up to 130W Type-C adapter
Up to 3-cell 54Whr battery

Simplified PC Updates

Get the latest BIOS, drivers and firmware versions, validated and delivered seamlessly from Dell.

Sustainability

This workstation has achieved the EPEAT Gold Climate+ designation, meeting industry best practices for decarbonization.

[Click here](#) to see the 360 degree view of the Precision 3490

¹ Based on Dell internal analysis, September 2023. Applicable to PCs on Intel processors. Not all features available with all PCs. Additional purchase required for some features.

² The latest Intel vPro based PCs provide an estimated 70% attack surface reduction compared to four-year-old devices. Based on IOActive's "Intel vPro 13th Gen Attack Surface Study" published March 2023 (commissioned by Intel), which evaluates Intel vPro devices powered by 13th Gen Intel Core processors against four-year-old Intel-based PCs on Windows OS. Details at www.intel.com/performance-vpro. Results may vary.



Intelligent performance

This thin and light, cost-effective workstation packs intelligent performance, based on the new Intel® Core™ Ultra processors that feature fast, integrated Intel® Arc graphics and AI Accelerators featuring NPU for Intel® AI Boost with vPro options and Copilot in Windows 11 - taking advantage of advancing AI technologies to improve user productivity across business and industry applications. The latest technologies from Intel, Microsoft and NVIDIA provide new levels of performance for growing world of AI.



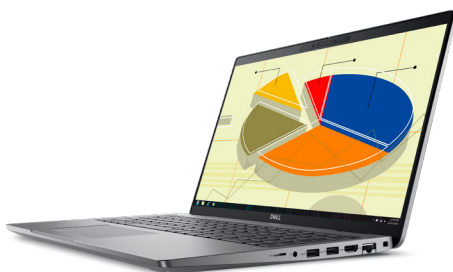
Immersive productivity and design

This 14" workstations delivers an exceptional user experience. Jumpstart your workflow with the **Copilot Hardware Key**, which provides quick access to the tools you need to start your workday. Revolutionize your meetings with **Windows Studio Effects**. Keep your audience engaged with **video auto-framing** and maintain eye contact effortlessly, even while referencing your notes, thanks to **AI-eye tracking technology**. Elevate your experience with AI-powered tools from Windows 11. Easily make use of the **Snipping Tool, voice access,** and **smart recommendations** within File Explorer and your Start menu.



Mission critical reliability and security

All Dell Precision workstations are tested and certified by independent software vendors to ensure reliability performance. Secure your workstation in our hybrid world with the industry's most secure commercial PCs* with built-in features that our competitors cannot match. Plus, they are MIL STD tested. Be secure in the office or on the road with features like an optional Smart Card Reader, optional Fingerprint Reader, and HDR IR Camera with proximity sensor. Layer on advanced threat protection with industry-leading partner software. Windows Hello and proximity sensor. Layer on advanced threat protection with industry-leading partner software. Truly embrace hybrid work with secure and reliable 4G and 5G connectivity.



*Based on Dell internal analysis, September 2023. Applicable to PCs on Intel processors. Not all features available with all PCs. Additional purchase required for some features

Dell Optimizer for Precision

Dell Optimizer is our AI-based optimization software that learns and responds to the way you work, designed to automatically improve application and device performance, PC and accessory battery run-time, audio/video settings and privacy – all in the background while you're working.



Get up to 18% in power savings¹

Save energy without sacrificing performance for ultimate efficiency with Power Optimization. Achieve power savings when you set your PC to Quiet Mode on your thermal management settings – giving you up to 2.4 watts of power savings compared to default mode.¹

Enhance application speed

Experience a boost in performance of your foreground application when running multiple programs simultaneously with Application Optimization.

Experience 2x faster network performance²

Network Optimization provides the world's first simultaneous multi-network connection for faster data and video downloads³, and joins the best network⁴ available.

Up-level audio for a better collaboration experience

Intelligent Audio senses your surroundings and improves the conferencing experience by removing unwanted sounds, alerts you when your voice quality is poor, and provides a better collaboration experience for you and all call participants.

Access personalized insights

Our Analytics feature monitors the utilization of your PC by analyzing your system's battery, storage, CPU and memory behavior to review your system's reliability and problem history, so you can identify bottlenecks quickly.

An intelligent ecosystem

Enjoy easy pairing and management of your Dell monitors and accessories with the integration of Dell Display Manager and Dell Peripheral Manager.

▶ [Click here to learn more about Dell Optimizer](#)

1. This is based on a Dell internal study, testing power and performance within our Dell Optimizer power module. White paper published November 2022 <https://www.delltechnologies.com/asset/en-us/solutions/business-solutions/industry-market/maximizing-power-efficiency-with-dell-optimizer-a-case-study.pdf>
 2. Based on A Principled Technologies Report commissioned by Dell that ran PC performance benchmarks on Dell Latitude 9430 laptops and OptiPlex 7400 all-in-one desktop PCs: Improve PC app performance, battery charging, and end-user experiences with Dell Optimizer, June 2023
 3. Simultaneous multi-network connection (or Connection based teaming) is a new connectivity feature under ExpressConnect. It simultaneously sends and receives data and video traffic using two wired or wireless connections. Based on Dell internal analysis
 4. Best network selection based on signal strength, channel congestion, router type and others. Network suggestions based on user credentials.

Simplify IT

Our secure¹ and simple to manage offerings make IT management a breeze

Improve fleet-wide security with Dell Trusted Workspace

Reduce the attack surface with the industry's most secure commercial PCs¹ with protections competitors cannot match:

Be secure from first boot

Rigorous, state-of-the-art supply chain controls and Dell-unique Secured Component Verification reduce the risk of product tampering.

Spot ticking timebombs

Early-alert feature Indicators of Attack, offered only by Dell, scans for behavior-based threats.

Stay protected from evolving threats

Only Dell offers off-host BIOS and firmware verification, providing greater security than other PCs.¹ Comprehensive security support further minimizes the risk of attack in-use.

Layer on advanced threat protection with software from our ecosystem of best-of-breed partners (e.g., CrowdStrike, Absolute).

[Learn More >](#)

Manage your fleet of PCs - reliably and easily

Help secure and optimize your endpoints and deliver end-user productivity with Dell Manageability Solutions

Dell Trusted Update Experience makes it simple to update endpoints with the latest BIOS, driver, and firmware versions.

Dell is the only Top-5 PC vendor that:



Publishes² a device drivers and downloads release schedule: IT Admins can deploy fleet-wide device updates on a predictable timeline.



Performs³ integrated validation of all driver and BIOS modules in an update: IT Admins can expect a trusted, system compatible update deployment, across a fleet of devices.

[Learn More >](#)

DELL Technologies

A P E X

Experience the flexibility to transform your IT and deploy the latest technologies at predictable costs



Dell APEX Managed Device Service

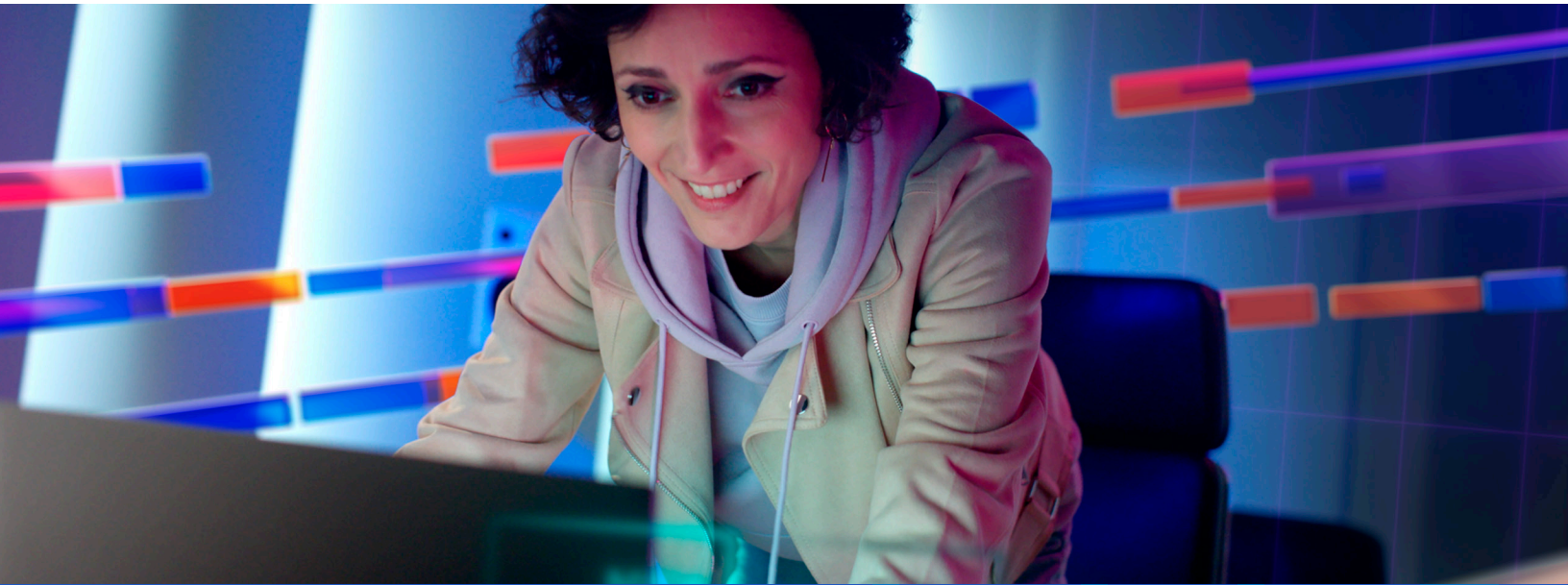
Designed for small and medium business with limited or no in-house IT, this fully managed subscription includes a team of IT experts that keep business devices up-to-date and secure, with no year-long commitment required (US only.)



Dell APEX PC-as-a-Service

Designed to meet the specific IT needs of larger companies, this fully customizable subscription covers everything – devices, software and services available from one-to-five-year terms.

[Learn More >](#)



Mobile Workstation Solution

Create your ideal workspace with these recommended accessories.



Dell UltraSharp 34 Curved Thunderbolt™ Hub Monitor - U3425WE

A revolutionary 34-inch dual QHD curved monitor with ultra-wide views, multitasking features and seamless connectivity for an immersive work experience.



Dell 24 Monitor - P2423D

Stay focused on a 23.8-inch QHD monitor optimized to deliver high performance details and clarity.



Dell Thunderbolt™ 4 Dock - WD22TB4

Experience lightning fast charging and Thunderbolt™ 4 connectivity with this flexible and powerful modular dock.



Dell Premier Wireless Keyboard and Mouse - KM7321W

Experience superior multitasking features with a stylish and comfortable premium keyboard and mouse combo. Complete your tasks powered by one of the industry's leading battery lives at up to 36 months.*



Dell EcoLoop Pro Backpack - CP5723

Designed for on-the-go productivity and protection, the Dell EcoLoop Pro Backpack 15 is made of eco-conscious material to complement busy lifestyles.



Dell Wireless Headset - WL3024

Experience clear communication with this wireless AI-based noise cancellation headset, designed with a focus on productivity and comfort for all-day conferencing.

[▶ Click here to learn more about our Workspace Solutions](#)

*Based on Dell analysis of battery life usage model calculations, Nov. 2020. Results vary depending on use, operating conditions and other factors.

*Based on internal analysis of external 4K personal conferencing webcams, August 2023.



Sustainability on Dell Precision 3490

Delivering innovative technology and solutions to collectively lower our environmental impact.

Built with Sustainable Materials

Your Precision workstation is crafted with a variety of sustainable materials including post-consumer recycled plastic, ocean-bound plastic, bio-based plastic and reclaimed carbon fiber. This year, this workstation will start shipping with 50% recycled cobalt in the battery.¹ This workstation also ships with an adapter designed with post-consumer recycled plastic and recycled aluminum.²

Environmental Certifications & Registrations

Meeting environmental standards demonstrate how our products adhere to energy-efficiency specifications and other extensive climate-related standards. This workstation is Certified ENERGY STAR[®] 8.0, TCO certified, generation 9 and EPEAT gold registered with Climate+ designation.⁵

Low-impact Packaging

Your Precision 3490 workstation ships in packaging made with 100% recycled or renewable content, that is also 100% recyclable.³ It is eligible for multipack to reduce packaging and transportation waste.⁴



See how we are reducing the impact of our products and solutions Dell.com/Sustainable-Devices

¹ Based on internal analysis, January 2024.

² Based on internal analysis, November 2023. 95% recycled plastic in the case and AC inlet and 98% recycled aluminum in the adapter shielding and thermal module. Recycled cobalt: Shipping timelines may vary based on region and laptop configuration.

³ Contains 38.8% recycled content and 61.2% renewable materials. Renewable materials in the form of sustainably forested fibers. Percentages may vary slightly by region. Excludes optional items added to order and included in box. Paper packaging materials can be recycled via municipal recycling, where available. System bag is made from recycled plastic and can be recycled along with other thin plastics. See local recycling guidelines.

⁴ Based on internal analysis, January 2024.

⁵ Based on internal analysis, January 2024. Based on EPEAT Climate+ Designations achieved in all applicable countries. EPEAT registered where applicable. EPEAT registration varies by country. See www.epeat.net for registration status and tier levels.

FEATURE	TECHNICAL SPECIFICATION	FEATURE	TECHNICAL SPECIFICATION
MODEL NUMBER¹	Precision 3490		
PROCESSOR¹	Intel® Core™ Ultra 5 125U vPro® Essentials (12 MB cache, 12 cores, up to 4.30 GHz) Intel® Core™ Ultra 7 155U vPro® Essentials (12 MB cache, 12 cores, up to 4.80 GHz) Intel® Core™ Ultra 5 125H vPro® Essentials (18 MB cache, 14 cores, up to 4.50 GHz) Intel® Core™ Ultra 5 135H vPro® Enterprise (18 MB cache, 14 cores, up to 4.60 GHz) Intel® Core™ Ultra 7 155H vPro® Essentials (24 MB cache, 16 cores, up to 4.80 GHz) Intel® Core™ Ultra 7 165H vPro® Enterprise (24 MB cache, 16 cores, up to 5 GHz)	PRODUCTIVITY SW¹	Dell Command Update (DCU) Dell Digital Delivery - Cirrus Client Dell Optimizer Excalibur MS Office MS Office - single language MS Office Home Business Non-Premium (Japan) MS Office Personal Non-Premium (Japan) MS Office Pro Non-Premium (Japan) SupportAssist
OPERATING SYSTEM¹	Windows 11 Pro Windows 11 Home Ubuntu® 22.04 LTS Red Hat 9.4	PRIMARY HARD DISK DRIVE^{1,5}	256 GB, M.2 2230, Gen 4 PCIe NVMe, SSD, Class 35 512 GB, M.2 2230, Gen 4 PCIe NVMe, SSD, Class 35 512 GB, M.2 2230, Gen 4 PCIe NVMe, SED, Class 35 1 TB, M.2 2230, Gen 4 PCIe NVMe, SSD, Class 35 2 TB, M.2 2230, Gen 4 PCIe NVMe, SSD, Class 25
MEMORY^{1,2,3}	8 GB: 1 x 8 GB, DDR5, 5600 MT/s, single-channel 16 GB: 1 x 16 GB, DDR5, 5600 MT/s, single-channel 16 GB: 2 x 8 GB, DDR5, 5600 MT/s, dual-channel 32 GB: 2 x 16 GB, DDR5, 5600 MT/s, dual-channel 32 GB: 1 x 32 GB, DDR5, 5600 MT/s, single-channel 64 GB: 2 x 32 GB, DDR5, 5600 MT/s, dual-channel	ACCIDENTAL DAMAGE SERVICES	1-year Accidental Damage Service 2-year Accidental Damage Service 3-year Accidental Damage Service 4-year Accidental Damage Service 5-year Accidental Damage Service 1-year Accidental Damage with Theft Service 2-year Accidental Damage with Theft Service 3-year Accidental Damage with Theft Service 4-year Accidental Damage with Theft Service 5-year Accidental Damage with Theft Service 1-year Accidental Damage Protection 2-year Accidental Damage Protection 3-year Accidental Damage Protection 4-year Accidental Damage Protection 5-year Accidental Damage Protection
WARRANTY^{9,10}	1Y hardware warranty with on-site/in-home service after remote diagnosis 2Y hardware warranty with on-site/in-home service after remote diagnosis 3Y hardware warranty with on-site/in-home service after remote diagnosis 4Y hardware warranty with on-site/in-home service after remote diagnosis 5Y hardware warranty with on-site/in-home service after remote diagnosis 1Y ProSupport Suite 2Y ProSupport Suite 3Y ProSupport Suite 4Y ProSupport Suite 5Y ProSupport Suite 2Y Data and Protective Services Extended Battery Services (EBS) - FRU Batteries Only 3Y Data and Protective Services Extended Battery Services (EBS) - FRU Batteries Only	PORTS	(2) Thunderbolt™ 4 (40 Gbps) with DisplayPort™ Alt Mode/USB Type-C/USB4/Power Delivery USB 3.2 Gen 1 port with PowerShare USB 3.2 Gen 1 port HDMI 2.1 port Universal audio port RJ45 Ethernet port
VIDEO CARD	Integrated Graphics: Intel® Arc™ Graphics - For Intel® Core™ H processors and requires 128-bit (dual-channel) memory with minimum of 16 GB memory Intel® Graphics Discrete Graphics: NVIDIA® RTX™ 500 Ada Generation, 4 GB GDDR6	SLOTS	Wedge-shaped lock slot Nano-SIM card slot (optional) Smart card reader slot (optional)
DISPLAY	14", FHD 1920x1080, 60Hz, IPS, Non-touch, Anti-Glare, 250 nit, 100% sRGB, 45% NTSC 14", FHD 1920x1080, 60Hz, IPS, Touch, Anti-Glare, 300 nit, 100% sRGB, 72% NTSC 14", FHD 1920x1080, 60Hz, IPS, Anti-Reflect/Anti-Smudge, Non-touch, 400 nit, 100% sRGB, Low Blue Light, Super Low Power	TOUCHPAD	Multi-touch gesture-enabled precision touchpad, seamless glass-integrated button
CASE COLOR	Titan Gray	REGULATORY^{8,12}	Product Safety, EMC and Environmental Datasheets Dell Regulatory Compliance Home Page Responsible Business Alliance policy
OPTICAL DRIVE	No optical drive	CHIPSET	14th Generation Intel MTL-H 14th Generation Intel MTL-U
CAMERA	1080p at 30 fps, RGB HDR camera, Dual-array microphones 1080p at 30 fps, RGB-IR HDR camera, Dual-array microphones 1080p at 30 fps, RGB-IR HDR camera, Dual-array microphones, Ambient light sensor, ExpressSign-in™ with Presence Detection and Intelligent Privacy	INPUT	3Dconnexion SpaceMouse Wireless - 3DX-700066 Dell Premier Multi-Device Wireless Keyboard and Mouse - KM7321W Wacom Cintiq Pro 24 Creative Pen Display Touch - DTH-2420 Dell Premier Rechargeable Wireless Mouse - MS7421W

FEATURE	TECHNICAL SPECIFICATION	FEATURE	TECHNICAL SPECIFICATION
MODEL NUMBER¹	Precision 3490		
KEYBOARD¹	English US non-backlit keyboard, 79-key English US backlit keyboard, 79-key English International non-backlit keyboard, 79-key English International backlit keyboard, 79-key Japanese non-backlit keyboard, 83-key Spanish (Latin America) non-backlit keyboard, 80-key French (Canadian) Quebec non-backlit keyboard, 80-key French (Canadian) backlit keyboard, 79-key Arabic backlit keyboard, 79-key Canada (Bilingual) (MUI) backlit keyboard, 79-key Chinese (Traditional) backlit keyboard, 79-key Greek backlit keyboard, 79-key Hebrew backlit keyboard, 79-key Korean backlit keyboard, 79-key Russian backlit keyboard, 79-key Thai backlit keyboard, 79-key Ukrainian backlit keyboard, 79-key Japanese backlit keyboard, 83-key Portuguese (Brazil) backlit keyboard, 80-key Belgian backlit keyboard, 80-key Bulgarian backlit keyboard, 80-key Czech/Slovak (MUI) backlit keyboard, 80-key Danish backlit keyboard, 80-key English UK backlit keyboard, 80-key Estonian backlit keyboard, 80-key French (European) backlit keyboard, 80-key German backlit keyboard, 80-key Hungarian backlit keyboard, 80-key Icelandic backlit keyboard, 80-key Italian backlit keyboard, 80-key Nordic (MUI) backlit keyboard, 80-key Norwegian backlit keyboard, 80-key Portuguese Iberian backlit keyboard, 80-key Slovenian backlit keyboard, 80-key Spanish (Castilian) backlit keyboard, 80-key Spanish (Latin America) backlit keyboard, 80-key Swedish/Finnish backlit keyboard, 80-key Swiss/European (MUI) backlit keyboard, 80-key Turkish backlit keyboard, 80-key Turkish (F) backlit keyboard, 80-key	WIRELESS	WLAN: Realtek Wi-Fi 6 RTL8852BE, 2x2, MIMO, 802.11ax, Bluetooth® 5.3 wireless card Intel® Wi-Fi 6E AX211, 2x2, MIMO, 802.11ax, Bluetooth® 5.3 wireless card WWAN: 4G CAT12 - Qualcomm® Snapdragon™ SDX12 Global LTE-Advanced (DW5825e), eSIM 5G - Qualcomm® Snapdragon™ X62 Global 5G (DW5932e), eSIM capable 5G - Qualcomm® Snapdragon™ X62 Global 5G (DW5932e), no eSIM
DOCKING	Dell Thunderbolt Dock – WD22TB4	POWER	Integrated Graphics only: 65W AC adapter, USB Type-C Integrated/Discrete Graphics: 100W AC adapter, USB Type-C, E5 130W AC adapter, USB Type-C, E5
AUDIO N SPEAKERS¹	Stereo speakers with with Waves MaxxAudio® Pro 13.0, 2W x 2 = 4W total	Intel Responsiveness Technologies	Intel® Active Management Technology (iAMT)
PRIMARY BATTERY	3-cell, 42 Wh, ExpressCharge™, ExpressCharge™ Boost 3-cell, 42 Wh, Long Cycle Life, ExpressCharge™ 3-cell, 54 Wh, ExpressCharge™, ExpressCharge™ Boost 3-cell, 54 Wh, Long Cycle Life, ExpressCharge™	DIMENSIONS	US Height (rear): 0.83 in. (21.04 mm) Height (front): 0.75 in. (19.06 mm) Width: 12.65 in. (321.35 mm) Depth: 8.35 in. (212 mm) Starting weight: 3.09 lb (1.40 kg) Rest of the world Height (rear): 21.04 mm (0.83 in.) Height (front): 19.06 mm (0.75 in.) Width: 321.35 mm (12.65 in.) Depth: 212 mm (8.35 in.) Starting weight: 1.40 kg (3.09 lb)
SENSORS	Accelerometer for adaptive thermal	SYSTEMS MANAGEMENT	Dell Client Command Suite: Streamline how you deploy drivers, configure BIOS, monitor devices and manage updates. Dell Trusted Update Experience: Simplify how you update your endpoints with the latest BIOS, drivers and firmware versions

FEATURE	TECHNICAL SPECIFICATION	DESCRIPTION
MODEL NUMBER ¹	Precision 3490	
HARDWARE & FIRMWARE SECURITY (INCLUDED)	Dell Trusted Device	Generates insights into the security state of a platform, monitoring changes to BIOS attributes, detecting possible tampering of BIOS firmware, and more.
	Dell SafeBIOS	Verify the integrity of the BIOS with tamper detection and secure, off-host BIOS image capture.
	Dell SafeBIOS Indicators of Attack	Scan for behavior-based threats for early detection by enabling telemetry integration with popular third-party security and endpoint management solutions. <i>Includes Microsoft Intune, Carbon Black Cloud, CrowdStrike, Splunk.</i>
	Dell SafeBIOS Common Vulnerabilities & Exposures (CVE) Detection	Identify and address known BIOS vulnerabilities and patch devices swiftly. <i>*Available early 2024.</i>
HARDWARE & FIRMWARE SECURITY (OPTIONAL)	Dell SafeID	Secure end-user credentials. This unique hardware-based security solution provides a hardened and secure bank for storing and processing user credentials. Dependent on model. Credential security options may include: <ul style="list-style-type: none"> Secure interaction with Imprivada for authenticating credentials on multi-user devices Finger Print Reader in Power Button tied to ControlVault 3 ControlVault 3 Advanced Authentication with FIPS 140-2 Level 3 Certification Contactless Smart Card and ControlVault 3 Contactless Smart Card, NFC, and ControlVault 3 SED SSD NVMe, SSD and HDD (Opal and non-Opal) per SDL FIPS 201 Full Scan Finger Print Reader and ControlVault Trusted Platform Module (TPM) 2.0 discrete FIPS 140-2 certification for TPM
	Dell Secured Component Verification	Provides assurance that the device and its components remain secure from factory to first boot. On-device and cloud-based options available. Availability varies by region.
	Tamper-evident packaging	Detect tampering with this supply chain assurance offering. Availability varies by region.
	Hard drive wipes	Sanitize the hard drive in accordance with National Institute of Standards and Technology (NIST) guidelines with this supply chain assurance offering. Availability varies by region.
	Dell SafeShutter	Ensure user privacy with webcam shutter.
	Intel ME Verification	Verify the integrity of critical firmware using a secure off-host source. Requires Intel vPro.
	Chassis intrusion switch	Remotely detects hardware tampering and is integrated with Dell SafeBIOS Indicators of Attack.
	Kensington Security Slot™	Device locking option helps reduce the risk of a data breach. Standard slot that can be paired with a standard security cable lock. Spec varies by model: <ul style="list-style-type: none"> Dell Fixed Workstations (Desktops): Kensington Security Slot™ (T-bar) Dell Laptops: Kensington Security Slot™ (Wedge)
	Fingerprint reader	Fingerprint reader in Power button tied to ControlVault 3+ secures end-user credentials.
	OPAL drive / Self-encrypting drive (SED)	Hardware-based full disk encryption that protects user data without storing encryption keys in RAM where it can be accessed by malicious parties.
	SPI Flash Tamper Detection Circuit	Detects and prevents tampering with BIOS SPI flash chips on the motherboard.
	SOFTWARE SECURITY (OPTIONAL)	Dell SafeGuard & Response: CrowdStrike, Carbon Black, Secureworks
Dell SafeData: Absolute		Self-healing for applications and networks.
Dell SafeData: Netskope		Cloud and network data protection.
McAfee Business Protection		Simple, automated, all-in-one security made for small businesses.

TECHNOTES:

1. Offering may vary by region. Some items may be available after product introduction. For complete details, refer to the Owner's Manual published on www.dell.com/support.
2. System Memory and Graphics: Significant system memory may be used to support graphics, depending on system memory size and other factors.
3. 4GB or Greater System Memory Capability: A 64-bit operating system is required to support 4GB or more of system memory.
4. Particular versions of Microsoft Windows may not support the full Bluetooth 4.2 functionality
5. Storage Option: GB means 1 billion bytes and TB equals 1 trillion bytes; actual capacity varies with preloaded material and operating environment and will be less.
6. TPM is available in selected regions.
7. Please refer to www.epeat.net for specific country registration rating and participation.
8. Limited Hardware Warranty: For copy of Ltd Hardware Warranty, write Dell USA LP, Attn: Warranties, One Dell Way, Round Rock, TX 78682 or see www.dell.com/warranty.
9. Onsite service after Remote Diagnosis: Remote Diagnosis is determination by online/phone technician of cause of issue; may involve customer access to inside of system and multiple or extended sessions. If issue is covered by Limited Hardware Warranty (<https://www.dell.com/warranty>) and not resolved remotely, technician and/or part will be dispatched, usually within 1 business day following completion of Remote Diagnosis. Availability varies. Other conditions apply.
10. Dell Services: Availability and terms of Dell Services vary by region. For more information, visit www.dell.com/servicedescriptions.
11. For complete listing of declarations and certifications, refer to the Dell Regulatory and Environmental Datasheet found in the Manuals section of Product Support information www.dell.com/support/home/us/en/19.