

Mission: digital transformation

The starting point for
document capture

FUJITSU Image Scanner fi-7030

The fi-7030, like its siblings, offers much more than pure, high quality scanning technology that delivers speed and versatility for single purpose scanning. The fi-7030 opens up the opportunity for enterprises and public administration offices to start the journey to digital transformation and presents a professional entry point to information capture.

Technology – quality – solution

- Instant document capture
- Compact & robust
- Reliable durability
- Fast processing: 27 ppm / 54 ipm full speed

Based on industry leading scanning technology, the fi-7030 defines a complete capture solution that is centred around how the user will want to:

- Easily digitise paper documents
- Classify and verify content
- Validate files
- Release to defined target systems and processes

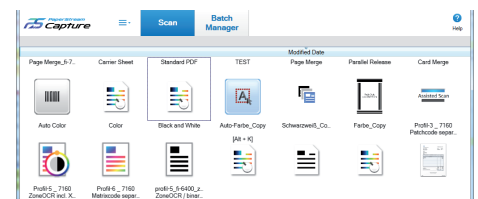
Using the fi-7030 solution all of this can be accomplished in an integrated but interruptible logical workflow routine that allows for collecting several documents into a single case file on different occasions. For more instant document capture, these routines can even be triggered from the scanner's front panel, capturing documents and placing them in pre-defined locations without any interruption.



PaperStream Capture 1.5

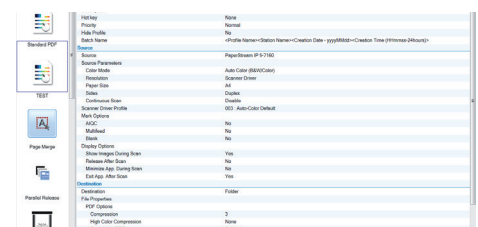
On screen, the user interface is provided by PaperStream Capture 1.5, a newly developed high performance document capture application that enables the fi-7030 to serve as an out-of-the-box document capture solution. As is typical for any Fujitsu fi-Series solution, the users or the admin staff stay in full control of how much of the hardware and software technology should be made available.

PaperStream Capture is easy to operate because it features a simplified user interface similar to those of mobile apps optimised for touch screens. First time users will appreciate its intuitiveness.



PaperStream Capture is based on the concept of "One Click Capture", reducing the required number of screen touches or clicks. It effectively streamlines repetitive operations, preventing operational errors.

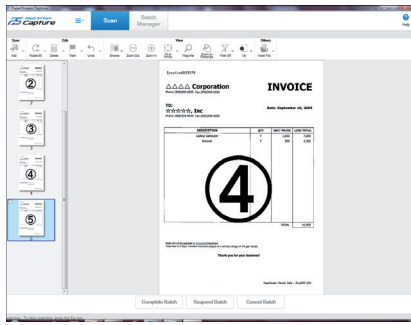
Where business critical document related processes require a higher level of user interaction, PaperStream Capture 1.5 conveniently provides information listings and step-by-step workflows.



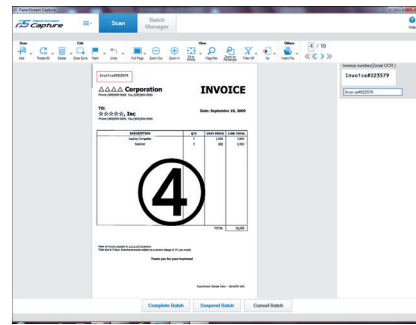
shaping tomorrow with you

FUJITSU

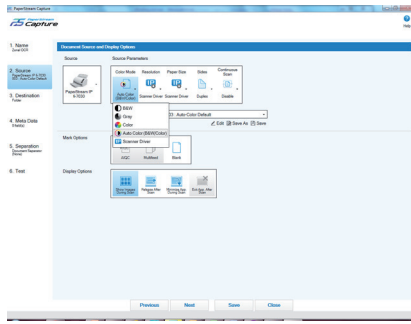
'Browse View' clearly shows the captured content:



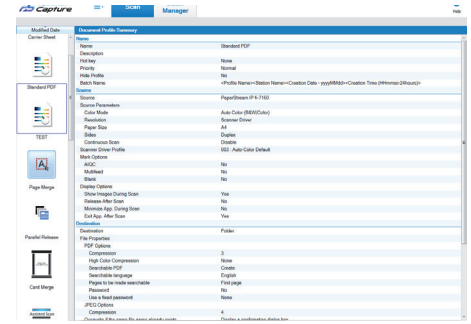
'Page View' reveals any additionally extracted information, such as invoice numbers, in an editable field:



Creating and maintaining PaperStream profiles and capturing routines directly within PaperStream Capture 1.5 is intuitively easy:



Capture jobs in progress are displayed in a sorted list for higher visibility of processing status:



Specifications

Model	fi-7030	
Supported operating systems	See http://emea.fujitsu.com/fiscannerfaqs/ for further information	
Scanner type	Automatic Document Feeder (ADF)	
Scanning modes	Simplex / Duplex, Colour / Greyscale / Mono	
Image sensor type	Colour CIS (Contact Image Sensor) x 2 (front x 1, back x 1)	
Light source	3 Colour LED (Red / Green / Blue) x 2 (front x 1, back x 1)	
Multifeed detection	Ultrasonic multifeed detection sensor x 1, Paper detection sensor x 1	
Document size	Maximum	216 x 355.6 mm
	Minimum	50.8 x 50.8 mm
Long page scanning ¹	216 x 5,588 mm	
Recommended paper weight	40 to 209 g/m ² / supports 127 to 209 g/m ² for A8 size ID card types, Embossed card 0.76 mm or less	
Scanning speed (A4 Portrait) ²	Simplex: 27 ppm (200/300 dpi), Duplex: 54 ipm (200/300 dpi)	
Colour ³ / Greyscale ³ / Mono ⁴		
Paper chute capacity (A4 Portrait) ⁵	50 sheets (A4: 80 g/m ²)	
Background colours	White	
Optical resolution	600 dpi	
Output resolution ⁶	Colour / Greyscale / Mono	50 to 600 dpi (adjustable by 1 dpi increments), 1,200 dpi (driver) ⁷
Output format	Colour: 24 bit, Greyscale: 8 bit, Mono: 1 bit	
Internal video processing	1,024 levels (10-bit)	
Interface / Connector shape	USB 2.0 / USB 1.1 / B type	
Image processing functions	Deskew, Cropping, Image emphasis, Error diffusion, Dither, Black & White Method, Dynamic threshold (iDTC), Static threshold, Advanced DTC, SDTC, De-Screen, Dropout colour (Red / Green / Blue / White / None / Saturation / Custom), Automatic colour detection, Multi image output, Blank page detection, sRGB output, Split image, Front/Back Merging	
Power requirements	AC 100 to 240 V ±10%	
Power consumption	Operating mode: 17 W or less / Sleep mode: 1.1 W or less / Auto standby (off) mode: 0.15 W or less	
Operating environment	Temperature: 5 to 35°C / Relative humidity: 20 to 80% (Non-condensing)	
Dimensions (W x D x H) ⁸ / Weight	290 x 146 x 130 mm / 2.9 kg	
Included software / drivers	PaperStream IP (TWAIN / TWAIN x64 / ISIS), PaperStream Capture, Software Operation Panel, Error Recovery Guide, ScanSnap Manager for fi Series ⁹ , Scan to Microsoft SharePoint ⁹ , ABBYY FineReader for ScanSnap ^{TM9} , Scanner Central Admin Agent	
Environmental compliance	ENERGY STAR [®] and RoHS ¹⁰	
Included items	ADF paper chute, AC cable, AC adapter, USB cable, Setup DVD-ROM	

- ¹ The fi-7030 is capable of scanning documents that exceed A4 in length: Documents up to 5,588 mm in length can be scanned at resolutions up to 200 dpi.
- ² Actual scanning speeds are affected by data transmission and software processing times.
- ³ JPEG compressed figures.
- ⁴ TIFF G4 compressed figures.
- ⁵ Maximum capacity varies, depending upon paper weight.
- ⁶ Maximum output resolutions may vary, depending upon the size of the area being scanned and whether the scanner is scanning in simple or duplex.
- ⁷ Scanning limitations due to scanning mode, document size and available memory may occur when scanning at high resolutions (600 dpi or higher).
- ⁸ Excluding the ADF paper chute and Stacker.
- ⁹ The software can be downloaded from the website designated in the Setup DVD-ROM.
- ¹⁰ PFU LIMITED, a Fujitsu company, has determined that this product meets RoHS requirements (2011/65/EU)



All names, manufacturer names, brand and product designations are subject to special trademark rights and are manufacturer's trademarks and/or registered brands of their respective owners. All indications are non-binding. Technical data is subject to change without prior notification.



PFU (EMEA) Limited
Hayes Park Central
Hayes End Road, Hayes
Middlesex UB4 8FE
United Kingdom

Tel: +44 (0)20 8573 4444

PFU (EMEA) Limited
Frankfurter Ring 211
80807 Munich
Germany

Tel: +49 (0)89 32378 0

PFU (EMEA) Limited
Viale Monza, 259
20126 Milano (MI)
Italy

Tel: +39 02 26294 1

PFU (EMEA) Limited
Camino Cerro de los Gamos, 1
28224 Pozuelo de Alarcón
Madrid
Spain

Tel: +34 91 784 90 00

<http://emea.fujitsu.com/scanners>

