

2x Fans. 2x Fun.

ASUS Innovations

- **Axial-tech Fan Design** features a smaller fan hub that facilitates longer blades and a barrier ring that increases downward air pressure.
- **Dual ball fan bearings** can last up to twice as long as sleeve bearing designs.
- **Auto-Extreme Technology** uses automation to enhance reliability.
- A **protective backplate** prevents PCB flex and trace damage.



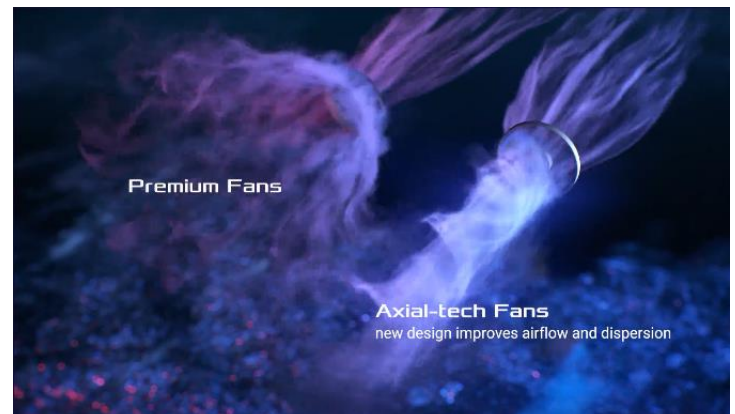
Dual Ball Fan Bearings

Different bearing types have unique pros and cons. Ball bearings excel at durability and can last up to twice as long as sleeve bearing designs.



Axial-tech Fan Design

Two tried-and-true Axial-tech fans feature a smaller hub that facilitates longer blades and a barrier ring to increase downward air pressure.



DUAL BIOS

Performance mode will let the fans spin up to keep the card running cool all the time. Quiet mode keeps the same power target and top-end settings, but offers a less aggressive fan curve for quieter operation at medium temps.



Protective Backplate

The PCB is reinforced by an aluminum backplate that adds structural rigidity, helping to prevent flex and protect components and trace pathways from damage.



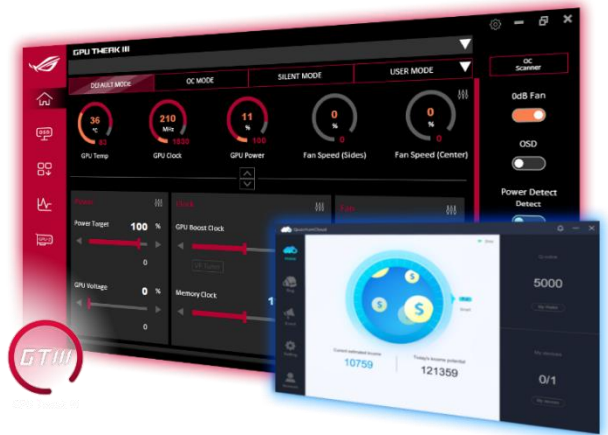
Stainless Steel Bracket

The mounting bracket of the Dual has been beefed up with 304 Stainless Steel that's harder and more resistant to corrosion.



Software Suite

Hardware and software come together to let you fully customize your experience and get the most out of your graphics card. GPU Tweak III allows for hardware tweaking and monitoring, and QuantumCloud utilizes your spare GPU computing power to generate passive income.



ASUS Features

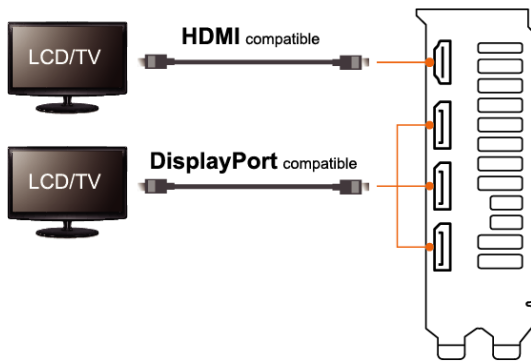


16GB GDDR6 Memory:
On-board memory for the best gaming experience & the best resolution.



OC Edition:
2520 MHz GPU boost clock in OC mode for outstanding gaming experience.

I/O Specifications



AMD Feature



AMD RDNA™ 3
Architecture with
Hardware Raytracing



AMD FidelityFX™ Super
Resolution technology



Radeon™ Anti-Lag*



Radeon™ Boost*

Specifications

Model Name	DUAL-RX7800XT-O16G
Graphics Engine	AMD Radeon™ RX 7800 XT
Stream Processors	3840
OpenGL®	OpenGL® 4.6
Engine Clock	OC mode: up to 2520 MHz (Boost Clock)/up to 2213 MHz (Game Clock) Default mode: up to 2475 MHz (Boost Clock)/up to 2169 MHz (Game Clock)
Memory Interface	256-bit
Video Memory	16GB GDDR6
Memory Speed	19.5 Gbps
Power Connector	2 x 8-pin
I/O	1 x Native HDMI 2.1 3 x Native DisplayPort 2.1
HDCP Compliant	HDCP 2.3
Digital Max. Resolution	7680 x 4320
Maximum Display Support	4
NVLink/Crossfire Support	No
Recommended PSU	750 W
Bus Standard	PCIe 4.0
Package Contents	1 x Speedsetup Manual
Software Bundled	ASUS GPU Tweak III & Driver, please download all software from the support site.
Slot	2.47 slot
Dimension	
Card Size (mm/inch)	279.9 x 133.9 x 49.3 mm 11.02 x 5.27 x 1.94 inch
Color Box (mm)	405 x 233 x 88.5 mm
Weight	
Single Card (KG)	0.933kg
Product Weight (with packing) (KG)	1.7kg
Note	<p>* Our wattage recommendation is based on a fully overclocked GPU and CPU system configuration. For a more tailored suggestion, please use the “Choose By Wattage” feature on our PSU product page: https://rog.asus.com/event/PSU/ASUS-Power-Supply-Units/index.html</p> <p>* All specifications are subject to change without notice. Please check with your supplier for exact offers. Products may not be available in all markets. If you do not use the latest and current specifications of ASUS products, you shall be liable for all loss and damage claimed by third party to ASUS based on false advertising or any other issues caused from using false specifications of ASUS products.</p> <p>* Crossfire Support for DirecX® 12 and Vulkan®</p>

	<p>* 'Game Clock' is the expected GPU clock when running typical gaming applications, set to typical TGP (Total Graphics Power). Actual individual game clock results may vary.</p> <p>* 'Boost Clock' is the maximum frequency achievable on the GPU running a bursty workload. Boost clock achievability, frequency, and sustainability will vary based on several factors, including but not limited to: thermal conditions and variation in applications and workloads.</p>
Regulation	<p>■S-AT2-001 GreenASUS Hazardous Substances Free(HSF) Technical Standard(Global RoHs,China RoHS,EU REACH,J-MOSS)</p> <p>■WEEE</p>
Certifications	<p>■ FCC ■ CE ■ C-TICK ■ BSMI ■ KCC ■ VCCI</p>

