

GETTING STARTED

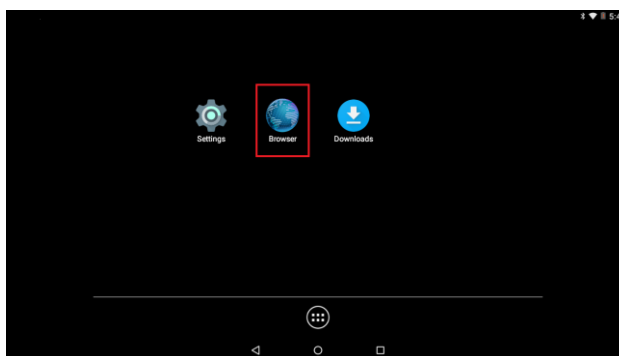
WITH TEAMVIEWER PILOT – THE SUPPORTED SIDE



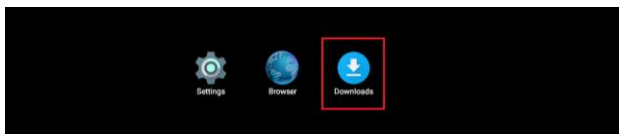
The following process explains how to install the TeamViewer Pilot app on the Moverio BT-300/BT-350

1. Installation

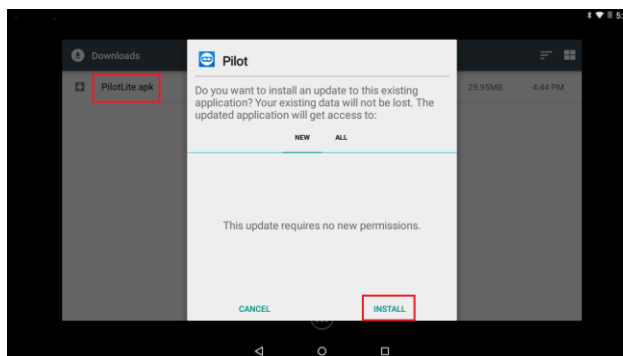
1. Check if the device is already connected to Wi-Fi
If not, follow your respective device guide, linked at the bottom of this guide, to set up network
2. Open the Browser application on your **BT-300 / BT-350** and enter the following URL
<https://download.teamviewer.com/pilot/PilotLite.apk>



3. After download is complete, open the **Downloads** application



4. Single tap on the **Pilot.Lite.apk** file and the select **INSTALL**

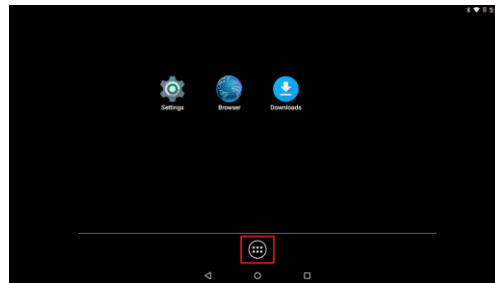




2. Share your TeamViewer ID with your support expert

1. Open the TeamViewer Pilot App on your BT-300 / BT-350:

a. Open the BT-300 or BT-350 Apps Menu



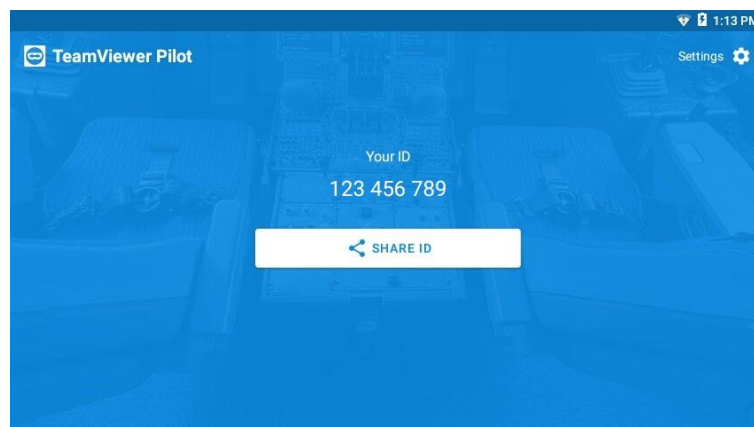
b. Open the Pilot Application



Your ID is a unique ID assigned to each device when TeamViewer is installed.

2. Share your ID with your support expert over the phone

Share ID and select any of the available options.

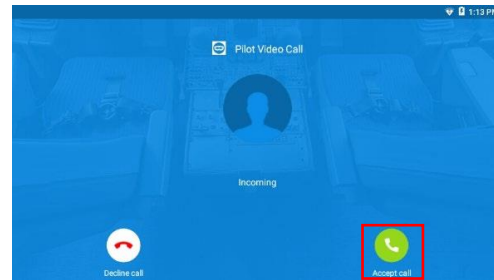




3. Establish a session

As soon as your support partner received your ID, a connection can be established.

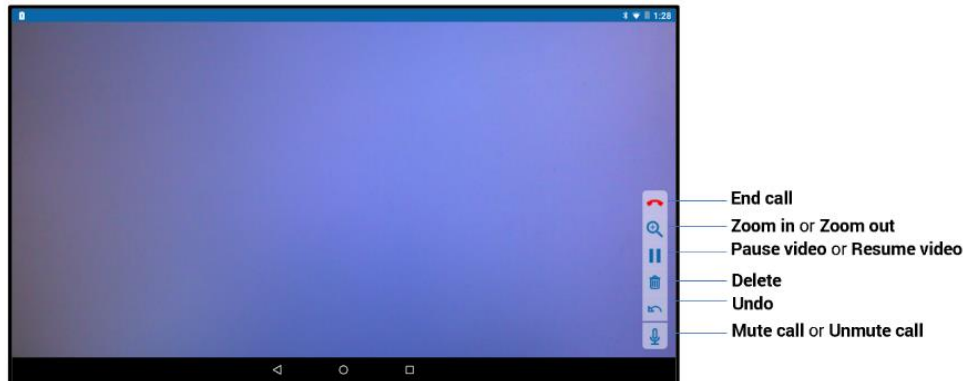
1. Your support expert needs to start the TeamViewer application www.teamviewer.com/download on a **Windows, macOS, Android or iOS device**.
2. The expert establishes a session by inserting your ID into his **Partner ID** field.
3. As soon as the expert hits the connect button, you will receive an **incoming call** to accept or decline the connection simply by using the controller to select 'decline call' or 'accept call'.



4. Using TeamViewer Pilot

- Benefit from real-time camera sharing and HD VoIP audio

As soon as you have accepted the incoming call from the remote expert, the camera image from your BT-350 will be transmitted in real-time. Both connection partners can communicate via HD VoIP.



For better audio quality, especially in a noisy environment, we recommend using a headset.

Additional Resource:

<https://tech.moverio.epson.com/en/bt-300/pdf/userguide.pdf>

<https://tech.moverio.epson.com/en/bt-350/pdf/userguide.pdf>