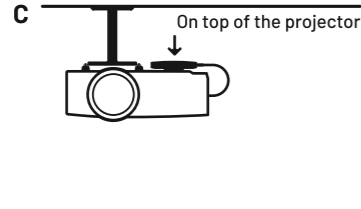
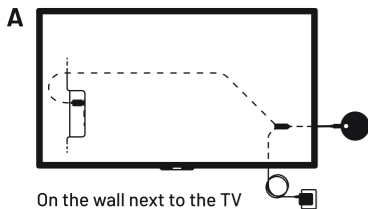


Mounting options

Read the installation guide and pick one of the following mounting options:



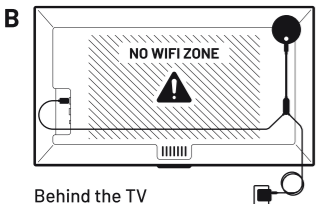
Get started

Follow the instructions at airtame.com/setup

If you need help, you can always reach us at airtame.com/support

Beware!

The adhesives included are non-removable and should only be used for permanent mounting.

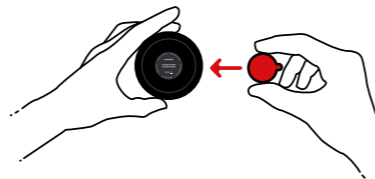


Magnetic Wall Mount

Flexible mounting

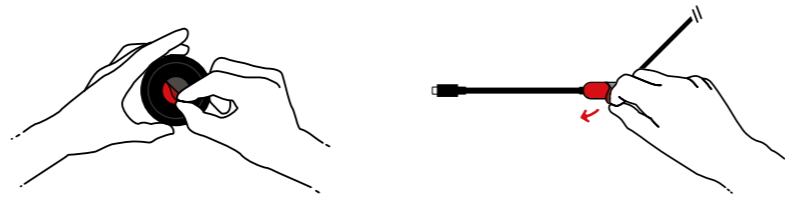
Fix the Magnetic Wall Mount to the back of the Airtame 2 and attach it to a magnetic area **without** removing the protective seal. The backs of many TVs are magnetic.

The magnet **will not** damage the TV or projector.



⚠ Permanent mounting

The non-removable adhesive is optional and can be stuck to a hard surface, such as a wall. Use the non-removable adhesive for **permanent** installation. For more information visit: airtame.help/mounting



Great Customer Support

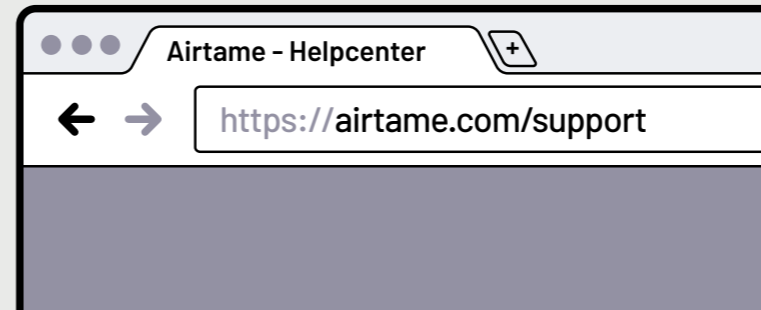
Help and guidance is only one click away. Go to airtame.com/support

Help and online support

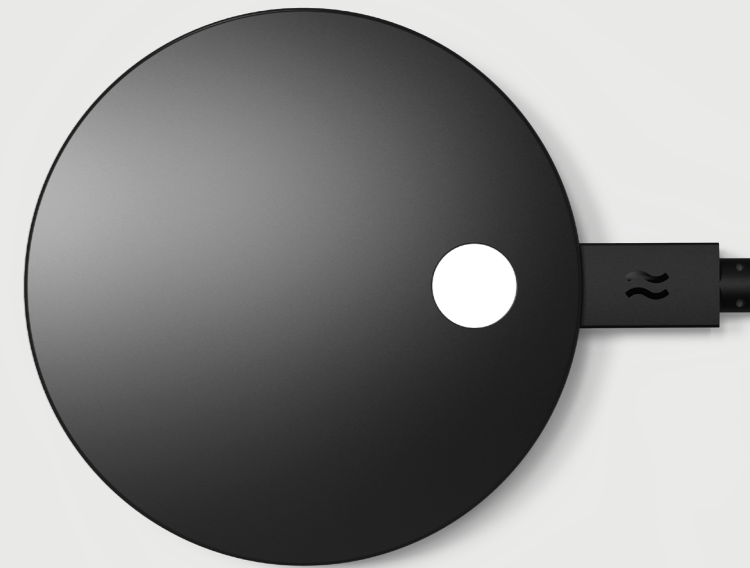
Our dedicated support team is available every working day. Chat with us directly at airtame.com

Get latest news

Find all the latest product updates and company news at airtame.com/blog



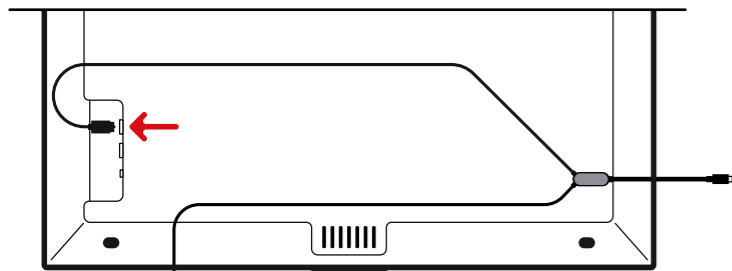
≈ AIRTAME



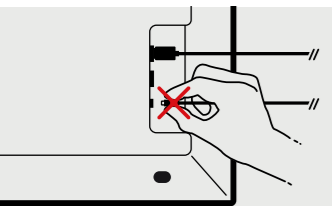
Installation guide

The optimal installation is only a few steps away

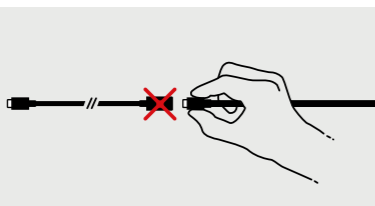
1. Plug in Aircord



Plug in HDMI to the TV, and connect USB A to the power supply. **Always use** the provided power supply to power the Airtame 2.



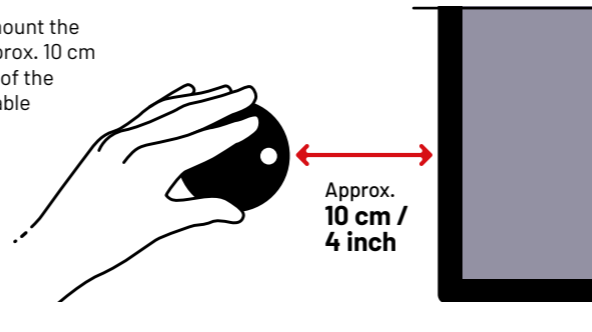
Do not power Airtame 2 via the TV.



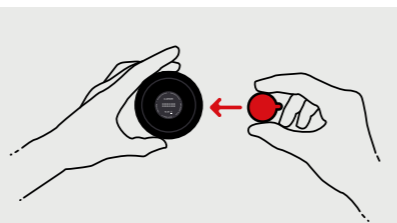
Do not extend USB.

2. Mount the Airtame 2

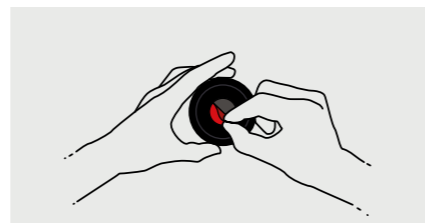
For optimal streaming mount the Airtame 2 on the wall approx. 10 cm / 4 inches from the edge of the TV using the non-removable adhesive.



Only use the non-removable adhesive for permanent mounting.



Fix the Magnetic Wall Mount on the back of the Airtame 2.

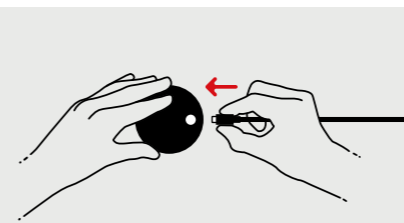
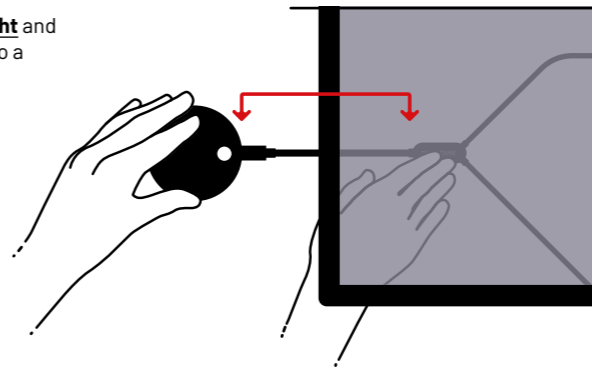


Remove the protective seal and expose the **non-removable adhesive**.

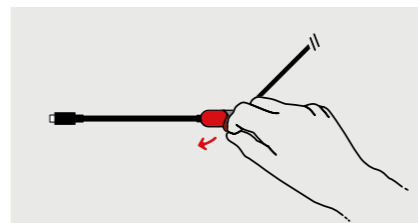
3. Cable management

Keep the Aircord straight and stick the cable splitter to a surface behind the TV.

Press gently to ensure that the non-removable adhesive sticks to the surface.



Hold Airtame 2 onto the Magnetic Wall Mount while plugging in the USB-C cable.



Remove the protective seal and expose the **non-removable adhesive**.

4. Download the Airtame app

1. Go to airtame.com/setup and download the Airtame app that fits the operating system.

To connect to your Airtame, users need to download the Airtame app.



2. Install app and follow the instructions.



3. Create an organization at airtame.cloud and add the Airtame 2 for easy management and more.

